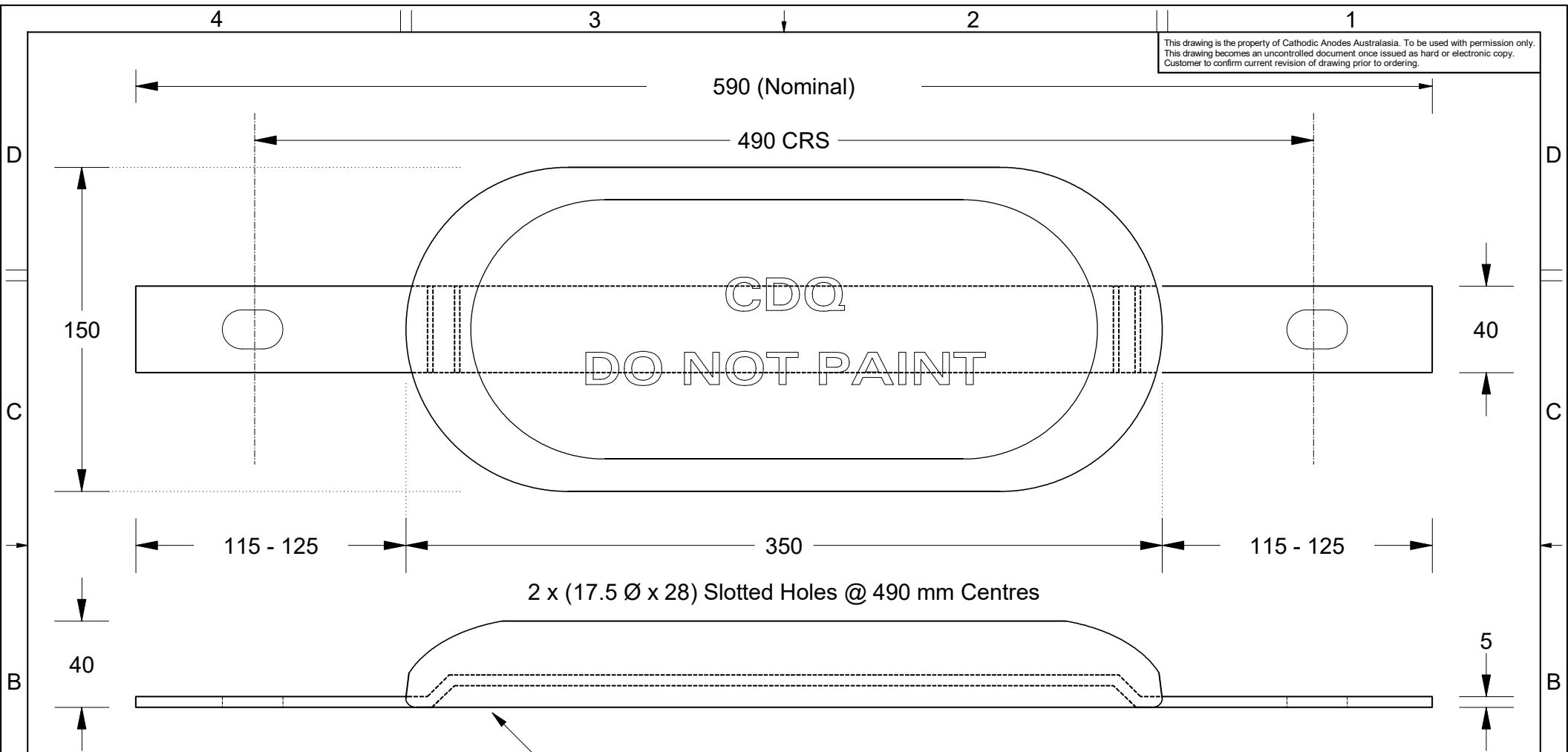


This drawing is the property of Cathodic Anodes Australasia. To be used with permission only. This drawing becomes an uncontrolled document once issued as hard or electronic copy. Customer to confirm current revision of drawing prior to ordering.



INSERT - 40 x 5 MILD STEEL FLAT BAR

**CDQ**  
CAST INDENTATION LETTERING

All dimensions are in mm (nominal)

**Chemical Composition Limits**  
Standard: AS2239 (Most current revision)  
Aluminium

Alloy: **A1**

Element	min.	max.
Zinc	2.1	2.7
Indium	0.017	0.025
Cadmium	0.008	0.012
Silicon	-	0.20
Iron	-	0.12
Copper	-	0.006
Other Impurities		
- each	-	0.02
- total	-	0.05
Aluminium	remainder	

- Notes
1. Anodes are cast to comply with CAA's standard casting tolerances
  2. All sharp edges removed for safe handling
  3. Anode insert material to meet relevant Australian/International specifications



Nett Weight Kg (nominal)	Gross Weight Kg (nominal)
<b>4.20</b>	<b>5.20</b>

Rev	Details of Change(s)	Date	Drawn	Verified
1	Custom (wide) Insert for Harrap Marine Services	27 July 2015	R.N.	J.L.
2	Corrected Revision Number - No Other Changes	12 January 2016	R.N.	J.L.

**CAA**  
Cathodic Anodes Australasia  
cathodicanodes.com.au

Product <b>Aluminium Anode</b>	
Part no. <b>CDA-5S Type 1 (A1) - Harrap</b>	Scale <b>1 : 2.5</b>
Drawing No: <b>CD3992</b>	Rev <b>2</b> Sheet <b>1 of 1</b>
Drawn by: R Northey	Date: 12 JAN 2016
Mould No: 98	Strap Sample: CD3993

A

A