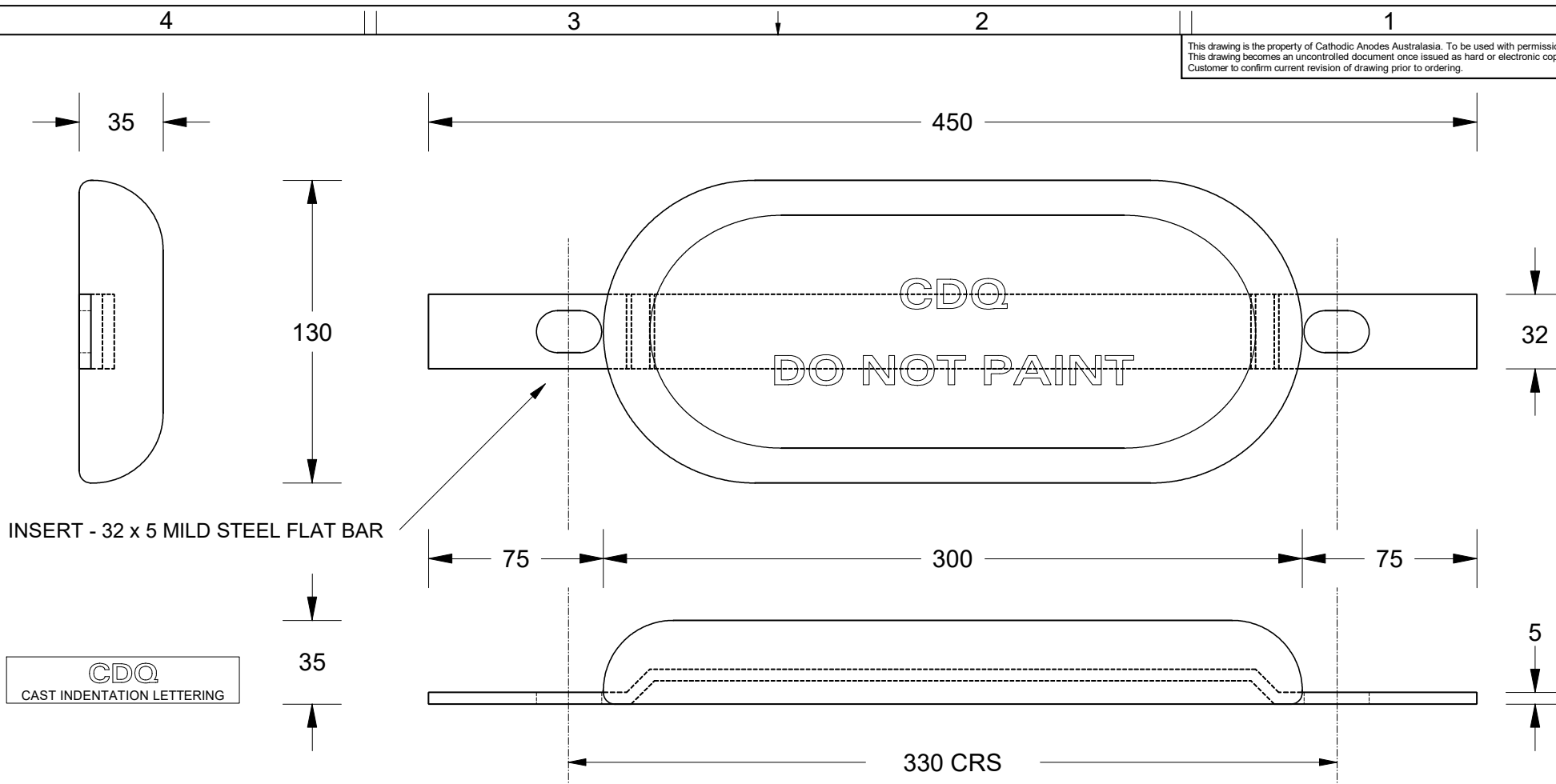


This drawing is the property of Cathodic Anodes Australasia. To be used with permission only.  
 This drawing becomes an uncontrolled document once issued as hard or electronic copy.  
 Customer to confirm current revision of drawing prior to ordering.



2 x (17.5 Ø x 28) Slotted Holes @ 330 mm Centres

Chemical Composition Limits			Alloy: <b>A1</b>
Standard: AS2239 (Most current revision)			
Aluminium			
Element	min.	max.	
Zinc	2.1	2.7	
Indium	0.017	0.025	
Cadmium	0.008	0.012	
Silicon	-	0.20	
Iron	-	0.12	
Copper	-	0.006	
Other Impurities			
- each	-	0.02	
- total	-	0.05	
Aluminium	remainder		

- Notes
1. Anodes are cast to comply with CAA's standard casting tolerances
  2. All sharp edges removed for safe handling
  3. Anode insert material to meet relevant Australian/International specifications



Rev	Details of Change(s)	Date	Drawn	Verified
1	Temporary Marked Up Drawing Only	12 May 2015	R.N.	J.L.
2	Correctly Scaled & Positioned Holes	12 January 2016	R.N.	J.L.

Nett Weight Kg (nominal)	Gross Weight Kg (nominal)
<b>2.70</b>	<b>3.20</b>

**CAA**  
Cathodic Anodes Australasia  
cathodicanodes.com.au

Product <b>Aluminium Anode</b>	
Part no. <b>CDA-3S Type 1 (A1) Harrap</b>	Scale <b>1 : 2.5</b>
Drawing No: <b>CD3991</b>	Rev Sheet <b>2 1 of 1</b>
Drawn by: R Northey	Date: 12 JAN 2016
Mould No: 107	Strap Sample: 20

All dimensions are in mm (nominal)