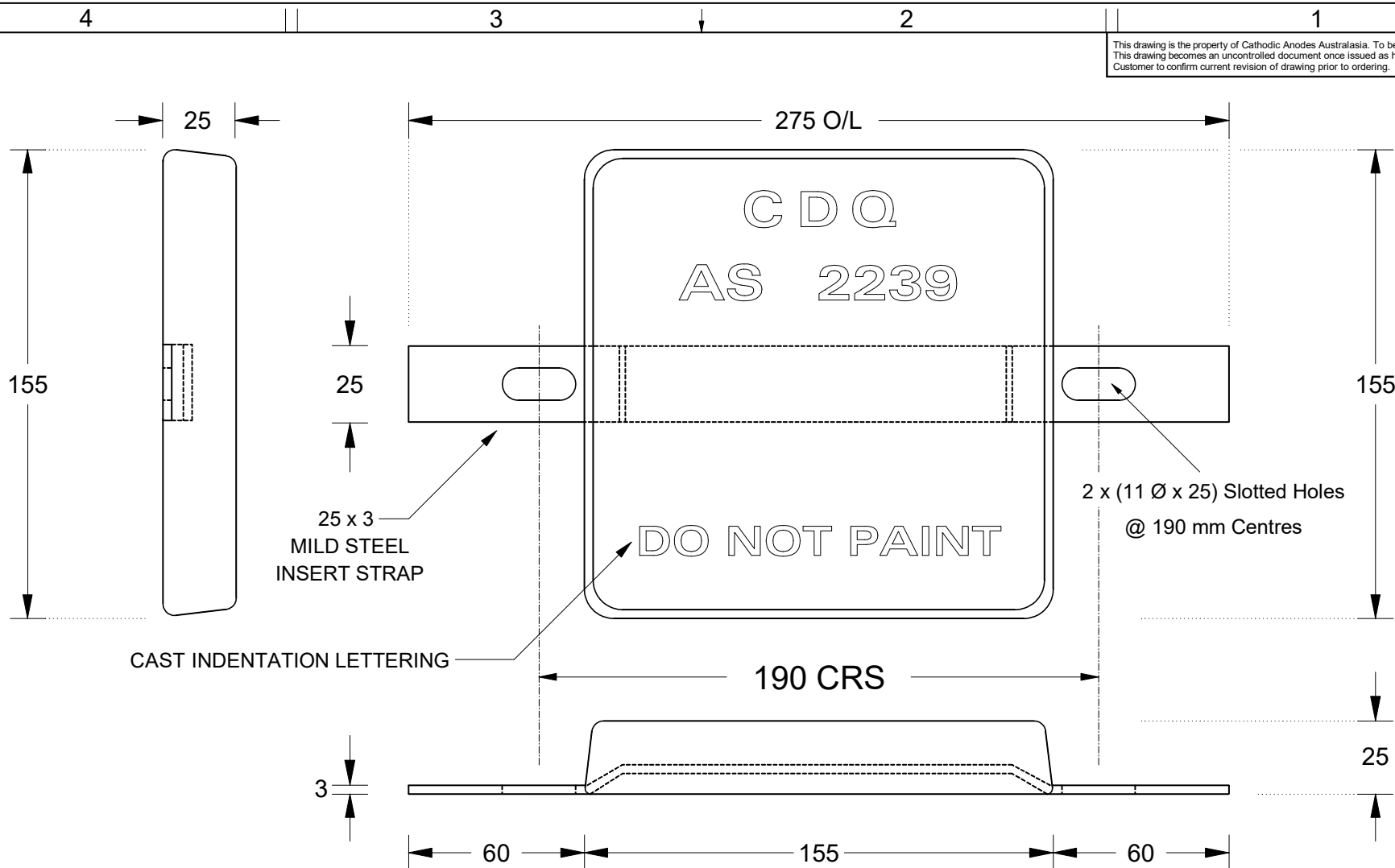


This drawing is the property of Cathodic Anodes Australasia. To be used with permission only.  
 This drawing becomes an uncontrolled document once issued as hard or electronic copy.  
 Customer to confirm current revision of drawing prior to ordering.



CAST INDENTATION LETTERING

25 x 3  
MILD STEEL  
INSERT STRAP

2 x (11 Ø x 25) Slotted Holes  
@ 190 mm Centres

190 CRS

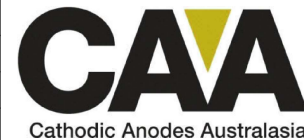
Chemical Composition Limits			Alloy: <b>A1</b>
Standard: AS2239 (Most current revision)			
Element	min.	max.	
Zinc	2.1	2.7	
Indium	0.017	0.025	
Cadmium	0.008	0.012	
Silicon	-	0.20	
Iron	-	0.12	
Copper	-	0.006	
Other Impurities			
- each	-	0.02	
- total	-	0.05	
Aluminium	remainder		

Notes

1. Anodes are cast to comply with CAA's standard casting tolerances
2. All sharp edges removed for safe handling
3. Anode insert material to meet relevant Australian/International specifications



Nett Weight Kg (nominal)		Gross Weight Kg (nominal)		
<b>1.60</b>		<b>1.80</b>		
Rev	Details of Change(s)	Date	Drawn	Verified
1	Temporary Marked Up Drawing Only	12 May 2015	R.N.	J.L.
2	Correctly Scaled & Positioned Holes	12 January 2016	R.N.	J.L.



cathodicanodes.com.au

Product <b>Aluminium Anode</b>			
Part no. <b>CDA-1.5S Type 1 (A1) Harrap</b>		Scale <b>1 : 2</b>	
Drawing No: <b>CD3990</b>		Rev <b>2</b>	Sheet <b>1 of 1</b>
Drawn by: R Northey		Date: 12 JAN 2016	
Mould No: 51		Insert: # 60 to be Punched	

All dimensions are in mm (nominal)