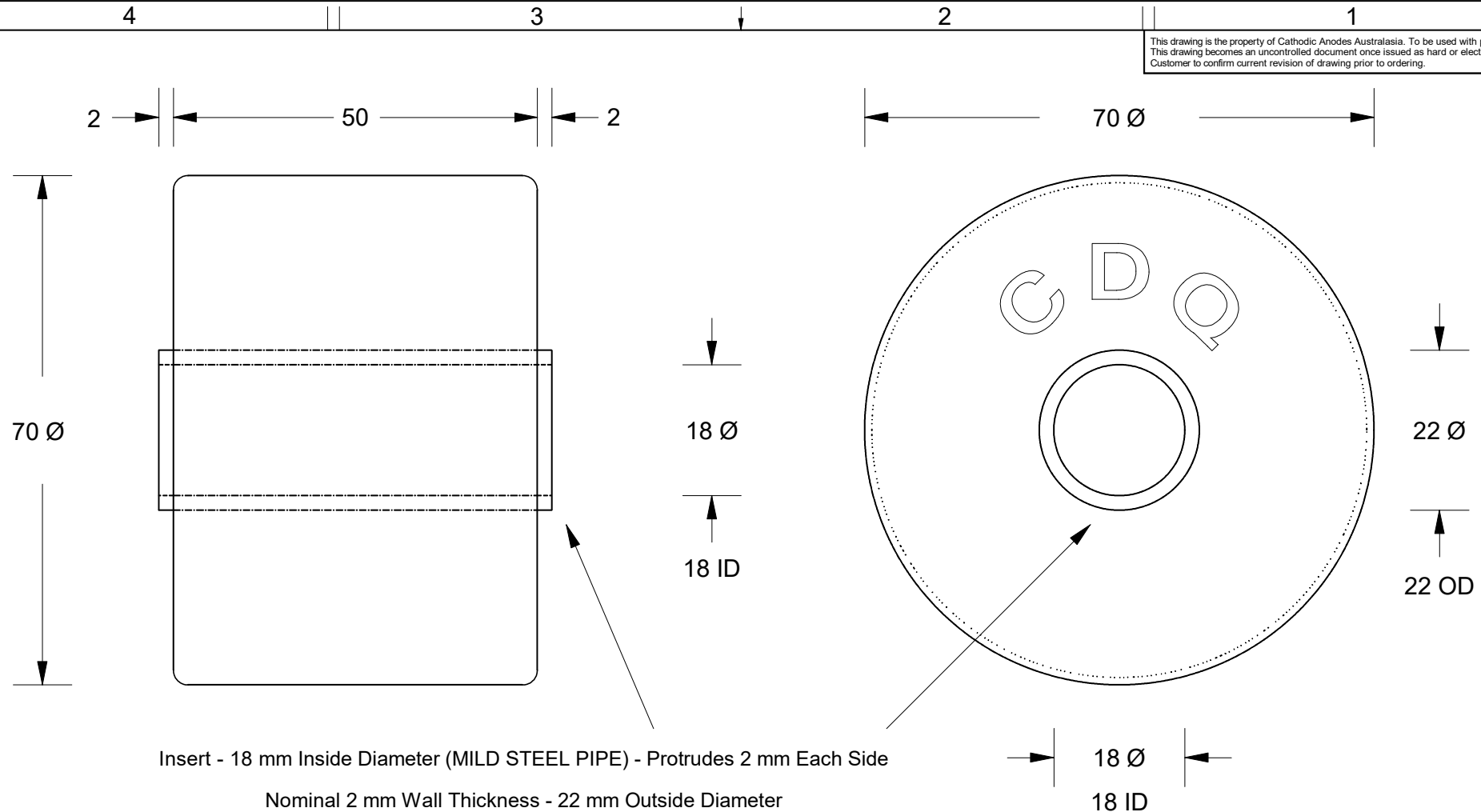


This drawing is the property of Cathodic Anodes Australasia. To be used with permission only. This drawing becomes an uncontrolled document once issued as hard or electronic copy. Customer to confirm current revision of drawing prior to ordering.



Insert - 18 mm Inside Diameter (MILD STEEL PIPE) - Protrudes 2 mm Each Side
 Nominal 2 mm Wall Thickness - 22 mm Outside Diameter

C D Q
 CAST INDENTATION LETTERING

All dimensions are in mm (nominal)

Chemical Composition Limits		Alloy:
Standard: AS2239 (Most current) Magnesium. Low Potential		M3
Element	min.	max.
Aluminium	5.3	6.7
Zinc	2.5	3.5
Manganese	0.25	0.40
Silicon	-	0.05
Copper	-	0.05
Iron	-	0.03
Nickel	-	0.003
Calcium	-	0.04
Other Impurities		
- each	-	-
- total	-	0.30
Magnesium	remainder	

- Notes
- Anodes are cast to comply with CAA's standard casting tolerances
 - All sharp edges removed for safe handling
 - Anode insert material to meet relevant Australian/International specifications

Rev		Details of Change(s)	Date	Initials	Verified	Initials
1		For Quotation	05 MAY 15	R.N.	05 MAY 15	R.G.

Nett Weight Kg (nominal)	Gross Weight Kg (nominal)
0.340	0.390

CAA
 Cathodic Anodes Australasia
 cathodicanodes.com.au

Product Magnesium Anode		Scale 1.25 : 1	
Part no. T.B.A.		Rev 2	Sheet 1 of 1
Drawing No: CD3960		Drawn by: R Northey Date: 05 MAY 2015	
All dimensions are in mm (nominal)			