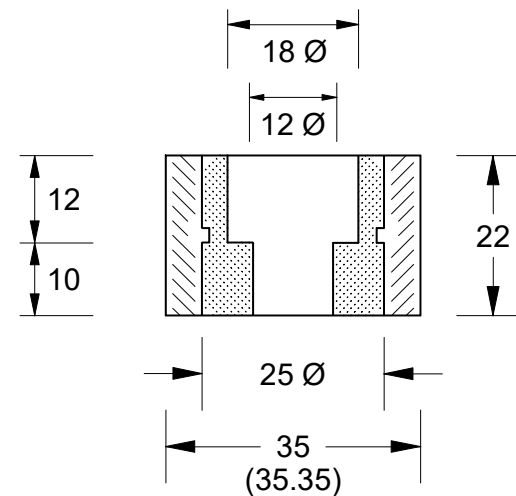




Section A:A - Scale 1 : 1



-  Steel Insert - 25 Ø (Grooved) and Drilled
-  Zinc Anode

Notes

1. Anodes are cast to comply with CAA's standard casting tolerances.
2. All sharp edges removed for safe handling.

Chemical Composition Limits			Alloy:
Standard: AS2239*			Z1
Zinc			
Element	Min	Max	
Cadmium	0.025	0.070	
Aluminium	0.10	0.50	
Silicon	—	0.005	
Copper	—	0.005	
Iron	—	0.005	
Lead	—	0.006	
Other Impurities	- Each	0.005	
	- Total	0.02	
Zinc		remainder	

* Corresponds to MIL-A-18001k alloy composition.

All dimensions are in mm (nominal)

Rev		Details of Change(s)	Date	Drawn	Verified
1		For Manufacture	29 April 2015	R.N.	B.L.

Nett Weight Kg (nominal)	Gross Weight Kg (nominal)
0.670	NA



Cathodic Anodes Australasia

cathodicanodes.com.au

Product		Zinc Anode	
Part no.	CDZ9-192	Scale	1 : 1
Drawing No:	CD3959	Rev	1
		Sheet	1 of 1
Drawn by: R Northey	Date: 29 APR 2015		
Mould No:	Tooling:		

