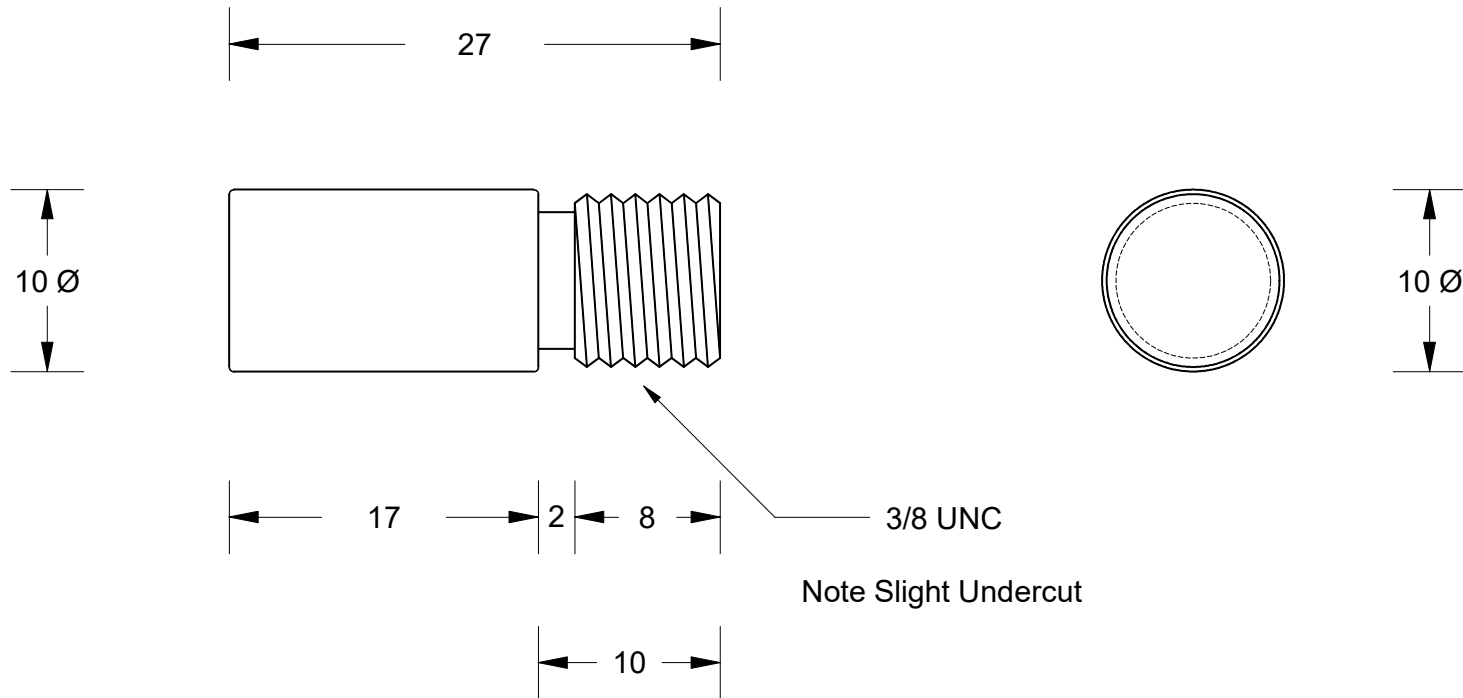


This drawing is the property of Cathodic Anodes Australasia. To be used with permission only.
 This drawing becomes an uncontrolled document once issued as hard or electronic copy.
 Customer to confirm current revision of drawing prior to ordering.

NO SHARP EDGES



Chemical Composition Limits			Alloy:
Standard: AS2239* (Most current revision)			Z1
Zinc			
Element	min.	max.	
Cadmium	0.025	0.07	
Aluminium	0.10	0.50	
Silicon	-	0.005	
Copper	-	0.005	
Iron	-	0.005	
Lead	-	0.006	
Other Impurities			
- each	-	0.005	
- total	-	0.02	
Zinc		remainder	

* Corresponds to MIL-DTL-18001L alloy composition

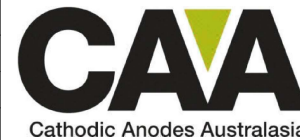
Notes

1. Anodes are cast to comply with CAA's standard casting tolerances
2. All sharp edges removed for safe handling
3. Anode insert material to meet relevant Australian/International specifications



Rev		Details of Change(s)	Date	Drawn	Verified
1		2013 Catalogue Version (CAA Logo)	16 April 2015	R.N.	R.G.
2		Press Fit 8 Ø changed to 3/8 UNC Thread	10 May 2019	R.N.	R.G.

Nett Weight Kg (nominal)	Gross Weight Kg (nominal)
0.012	N/A



cathodicanodes.com.au

Product			
Zinc Anode			
Part no.		Scale	
CDZ9-173		2.5 : 1	
Drawing No: CD3952		Rev	Sheet
		2	1 of 1
Drawn by: R Northey		Date: 10 MAY 2019	

All dimensions are in mm (nominal)