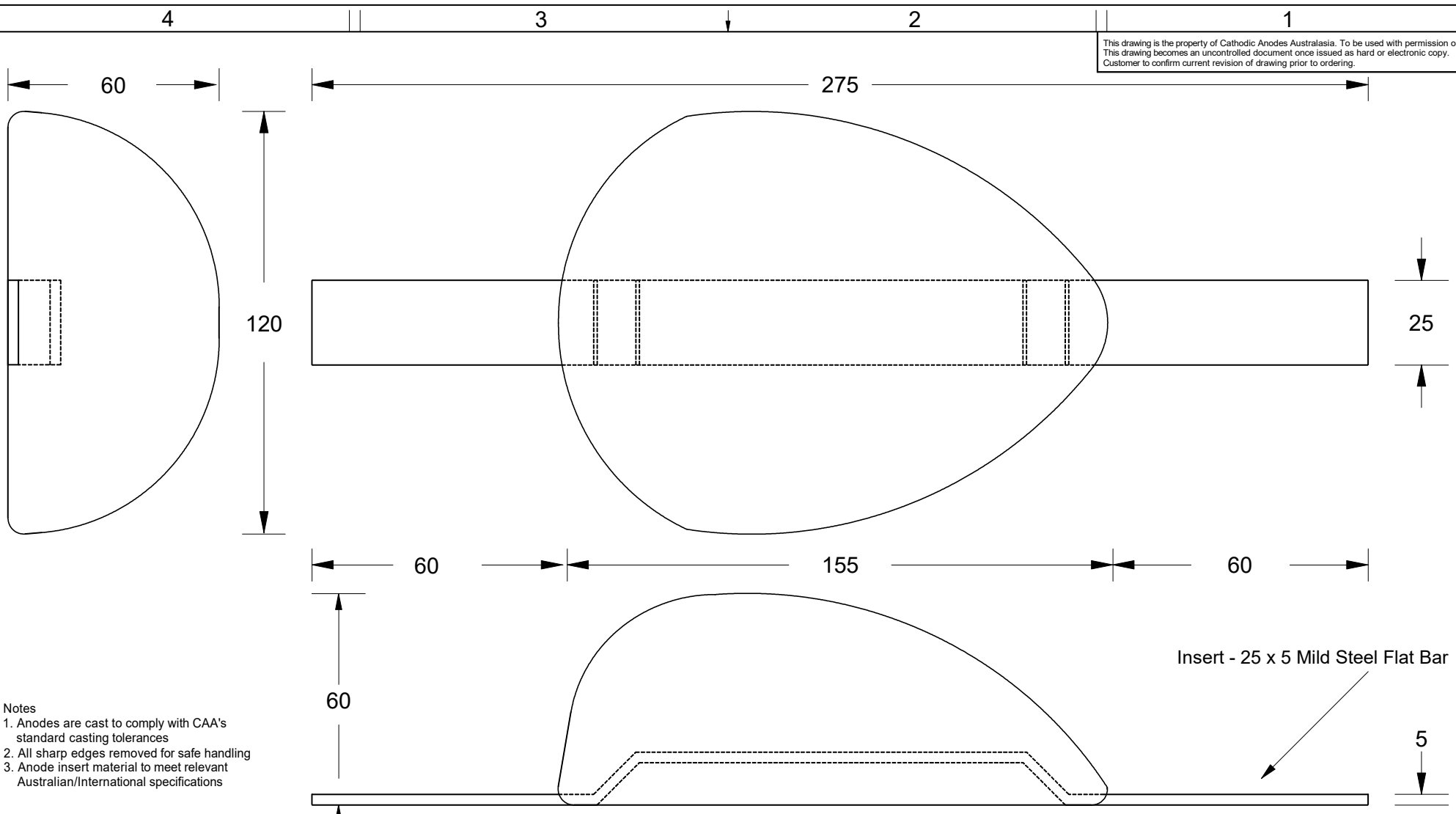


This drawing is the property of Cathodic Anodes Australasia. To be used with permission only. This drawing becomes an uncontrolled document once issued as hard or electronic copy. Customer to confirm current revision of drawing prior to ordering.



- Notes
1. Anodes are cast to comply with CAA's standard casting tolerances
  2. All sharp edges removed for safe handling
  3. Anode insert material to meet relevant Australian/International specifications

All dimensions are in mm (nominal)

Alloy Compositions Standard: AS2239 Aluminium (Bal. cont.)	Alloy: <b>A1</b>		Alloy: <b>A6</b>	
	Min	Max	Min	Max
Zinc	2.1	2.7	2.0	6.0
Indium	0.017	0.025	0.01	0.02
Cadmium	0.008	0.012	---	0.005
Silicon	---	0.20	0.08	0.12
Iron	---	0.12	---	0.12
Magnesium	---	0.02	---	0.02
Titanium	---	0.02	---	0.02
Copper	---	0.006	---	0.006
Tin	---	0.02	---	0.02
Other Impurities	- Each	0.02	- Each	0.02
Aluminium	- Total	0.05	- Total	0.05
	remainder		remainder	



Rev	Details of Change(s)	Date	Nett Weight Kg (nominal)		Gross Weight Kg (nominal)	
			1.5	1.8	Drawn	Verified
1	For Manufacture	09 April 2015			R.N.	R.G.

**CAA**  
Cathodic Anodes Australasia  
[cathodicanodes.com.au](http://cathodicanodes.com.au)

Product <b>Aluminium Anode</b>	
Part no. <b>CDA-1.5S Type 3</b>	Scale <b>1 : 1.5</b>
Drawing No: <b>CD3949</b>	Rev <b>1</b> Sheet <b>1 of 1</b>
Drawn by: R Northey	Date: 09 APR 2015
Mould No: 72	Strap Sample: 25x5 Black

