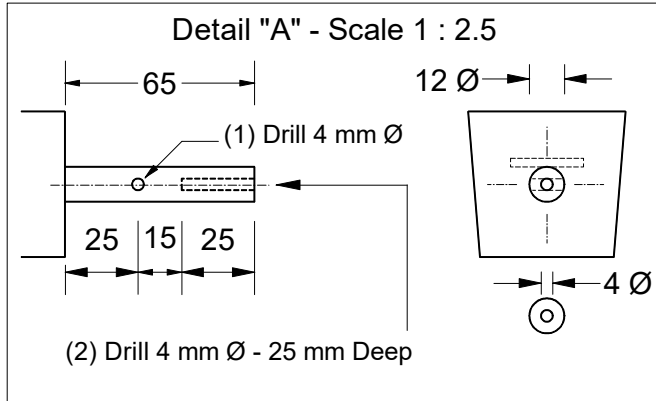
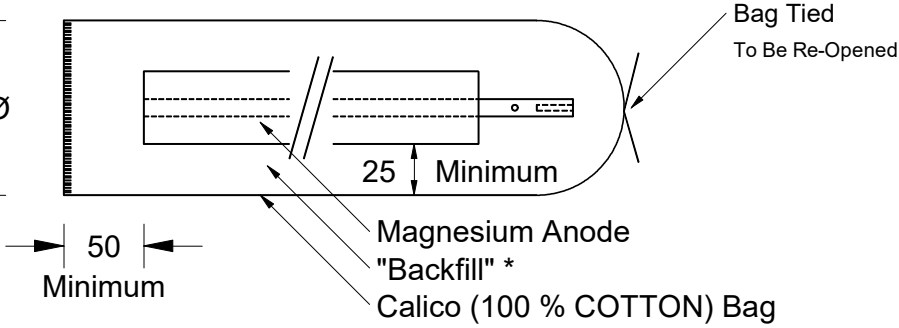
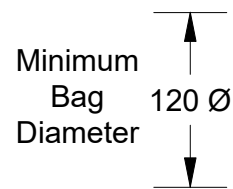
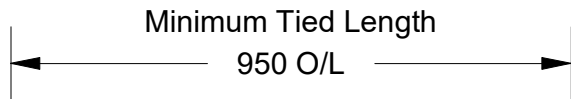
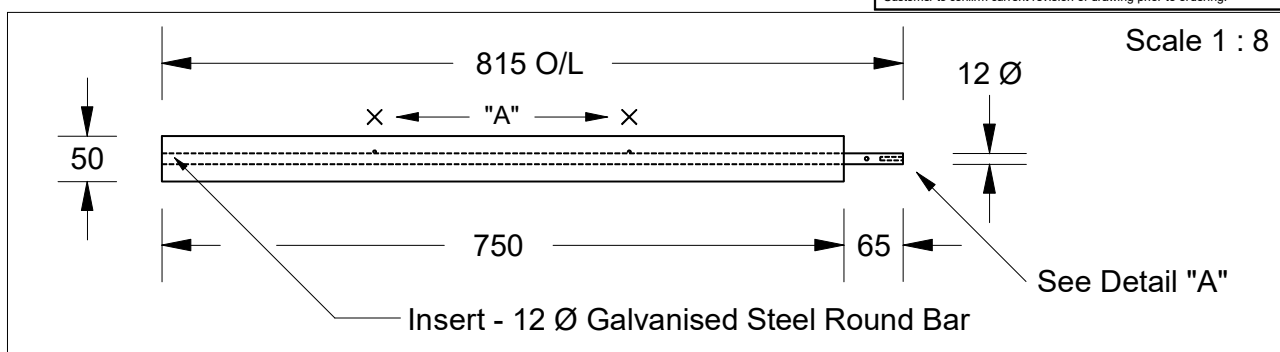
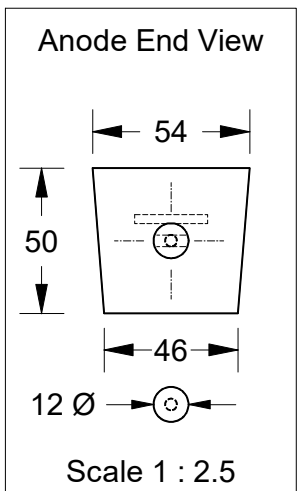


This drawing is the property of Cathodic Anodes Australasia. To be used with permission only. This drawing becomes an uncontrolled document once issued as hard or electronic copy. Customer to confirm current revision of drawing prior to ordering.



**"Backfill" Composition 45% Gypsum, 50% Calcium Bentonite, 5% Sodium Sulphate

To Suit Cable Type:
 6 mm Square "SDI"
 Single Core Double Insulated
 Normally 10 m Cable - Red Inner & White Outer

- Notes**
- Anodes are cast to comply with CAA's standard casting tolerances
 - All sharp edges removed for safe handling
 - Anode insert material to meet relevant Australian/International specifications

| Chemical Composition Limits | | Alloy: |
|---|-----------|--------|
| Element | min. | max. |
| Standard: ASTM B843 (Most current revision) | | |
| Magnesium. High Potential | | |
| M1C | | |
| Aluminium | - | 0.01 |
| Zinc | - | 0.02 |
| Manganese | 0.50 | 1.3* |
| Silicon | - | 0.05 |
| Copper | - | 0.02 |
| Iron | - | 0.03 |
| Nickel | - | 0.001 |
| Calcium | - | 0.04 |
| Other Impurities | - | - |
| - each | - | 0.05 |
| - total | - | 0.30 |
| Magnesium | remainder | - |

| Density of Cast Magnesium Anode Alloys | |
|--|--------------------------|
| M1C (calculated mean) | 1.73 g / cm ³ |
| M3 (calculated mean) | 1.94 g / cm ³ |

| Anode & Insert | | | | | |
|----------------|---|--------------|----------|-----------|----------|
| Nett Weight | | Gross Weight | | | |
| Kg (nominal) | | Kg (nominal) | | | |
| 3.1 | | 3.8 | | | |
| Rev | Details of Change(s) | Date | Initials | Verified | Initials |
| 1 | For Quotation | 09 MAR 15 | R.N. | 09 MAR 15 | J.L. |
| 2 | 2 x (3 mm x 25) Wire Anchors added to insert. | 21 APR 15 | R.N. | 21 APR 15 | J.L. |
| 4 | | | | | |

CAA
 Cathodic Anodes Australasia
 cathodicanodes.com.au

| | | | |
|------------------------------------|-----------------------|------------------------|---------------|
| Product | | Magnesium Anode | |
| Part no. | CDM - 4P (M1C) | Scale | N.T.S. |
| Drawing No: | CD3942 | Rev | 2 |
| Sheet | 1 of 1 | | |
| Drawn by: R Northey | | Date: 21 APR 2015 | |
| All dimensions are in mm (nominal) | | | |