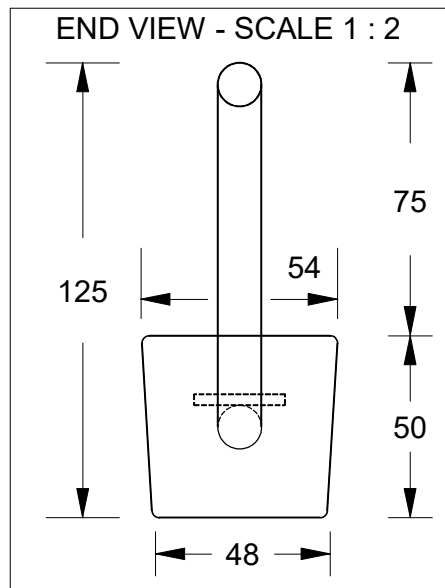
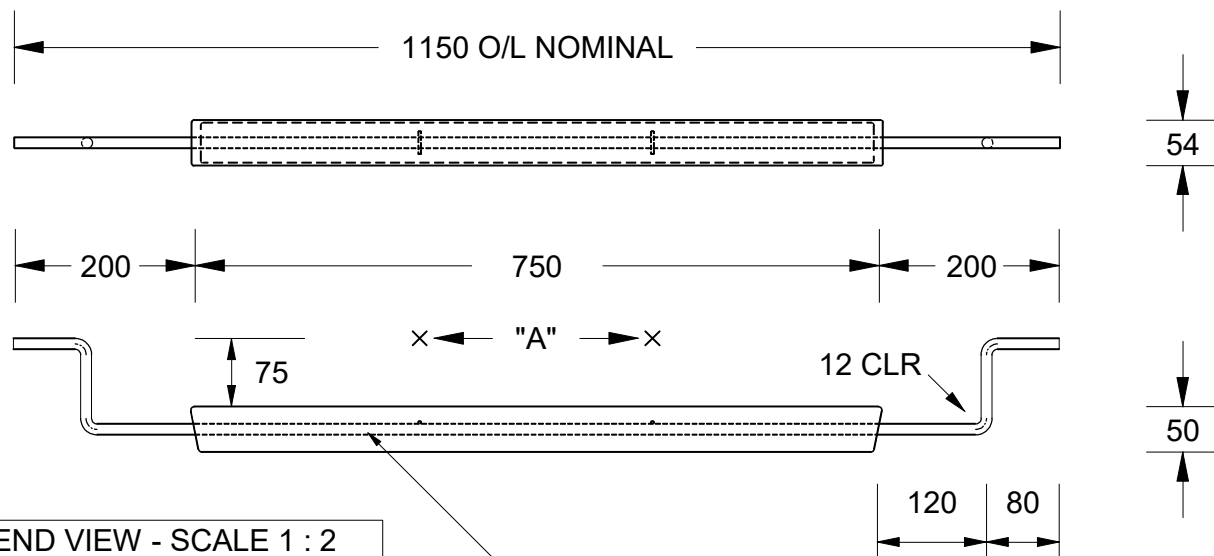


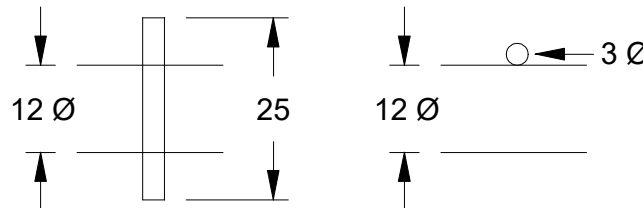
This drawing is the property of Cathodic Anodes Australasia. To be used with permission only. This drawing becomes an uncontrolled document once issued as hard or electronic copy. Customer to confirm current revision of drawing prior to ordering.

Density of Cast Magnesium Anode Alloys
 M1C (calculated mean) 1.73 g / cm³
 M3 (calculated mean) 1.94 g / cm³



INSERT - 12mm Ø GALVANISED STEEL ROUND BAR

Note: "A" - Tack Weld 3mm Ø x 25 mm long wire to 12 mm Ø Insert
 The Wire(s) provide anchor points for the anode material on the insert
 2 each required - 30 %, and 60 % of anode length - approximately



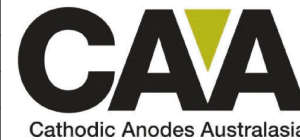
LOW POTENTIAL ALLOY

- Notes
1. Anodes are cast to comply with CAA's standard casting tolerances
 2. All sharp edges removed for safe handling
 3. Anode insert material to meet relevant Australian/International specifications

Chemical Composition Limits		Alloy:	
Element	min.	max.	M3
Standard: AS2239 (Most current revision)			
Magnesium. Low Potential			
Aluminium	5.3	6.7	
Zinc	2.5	3.5	
Manganese	0.25	0.40	
Silicon	-	0.05	
Copper	-	0.05	
Iron	-	0.03	
Nickel	-	0.003	
Calcium	-	0.04	
Other Impurities			
- each	-	-	
- total	-	0.30	
Magnesium	remainder		

Rev	Details of Change(s)	Date	Initials	Verified	Initials
1	For Quotation	09 MAR 15	R.N.	09 MAR 15	J.L.
2	2 x (3 mm x 25) Wire Anchors added to insert	21 APR 15	R.N.	21 APR 15	J.L.
4					

Nett Weight Kg (nominal)	Gross Weight Kg (nominal)
3.5	4.7



Cathodic Anodes Australasia

cathodicanodes.com.au

Product Magnesium Anode	
Part no. CDM - 4.0S (M3)	Scale 1 : 8
Drawing No: CD3937	Rev Sheet 2 1 of 1
Drawn by: R Northey Date: 21 APR 2015	
All dimensions are in mm (nominal)	