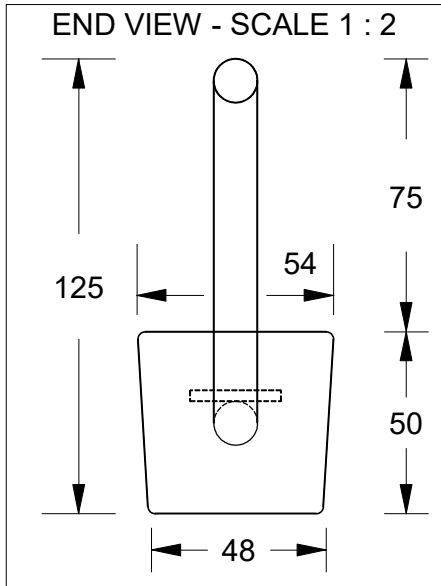
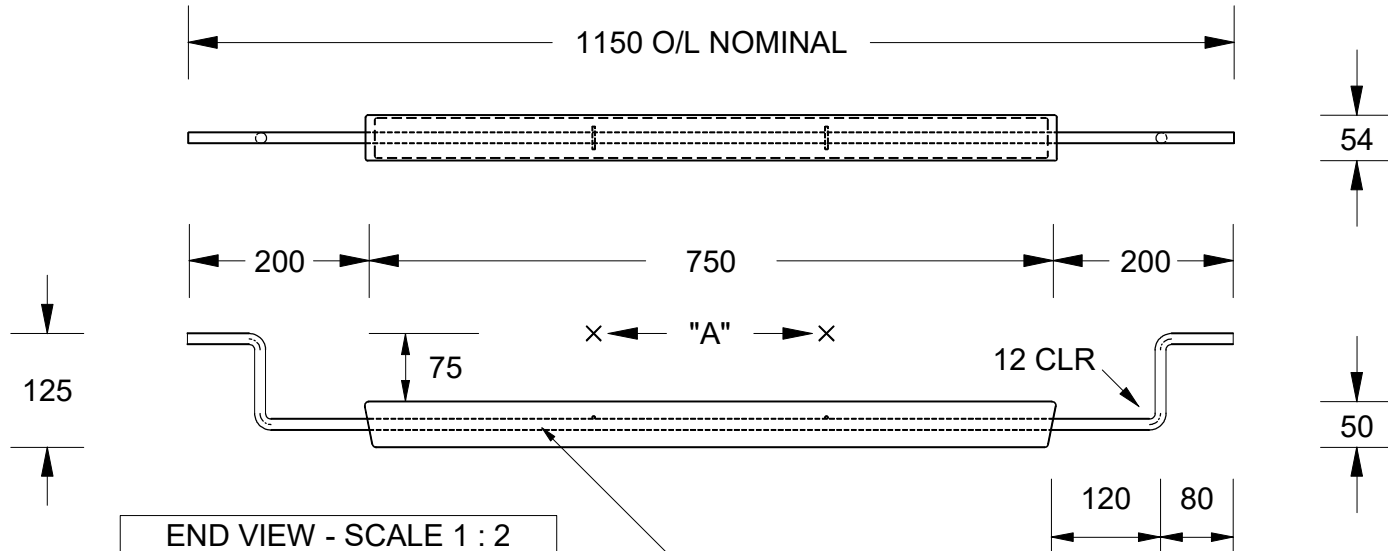
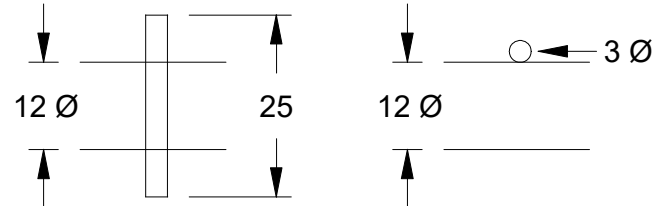


This drawing is the property of Cathodic Anodes Australasia. To be used with permission only.
 This drawing becomes an uncontrolled document once issued as hard or electronic copy.
 Customer to confirm current revision of drawing prior to ordering.



INSERT - 12mm Ø GALVANISED STEEL ROUND BAR

Note: "A" - Tack Weld 3mm Ø x 25 mm long wire to 12 mm Ø Insert
 The Wire(s) provide anchor points for the anode material on the insert
 2 each required - 30 %, and 60 % of anode length - approximately



Density of Cast Magnesium Anode Alloys
 M1C (calculated mean) 1.73 g / cm³
 M3 (calculated mean) 1.94 g / cm³

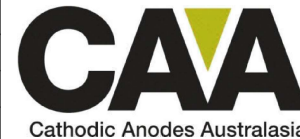
HIGH POTENTIAL ALLOY

- Notes
- Anodes are cast to comply with CAA's standard casting tolerances
 - All sharp edges removed for safe handling
 - Anode insert material to meet relevant Australian/International specifications

Chemical Composition Limits			Alloy: M1C
Element	min.	max.	
Standard: ASTM B843 (Most current revision)			
Magnesium, High Potential			
Aluminium	-	0.01	
Zinc	-	0.02	
Manganese	0.50	1.3*	
Silicon	-	0.05	
Copper	-	0.02	
Iron	-	0.03	
Nickel	-	0.001	
Calcium	-	0.04	
Other Impurities	-	-	
- each	-	0.05	
- total	-	0.30	
Magnesium	remainder		

Rev	Details of Change(s)	Date	Initials	Verified	Initials
1	For Quotation	09 MAR 15	R.N.	09 MAR 15	J.L.
2	2 x (3 mm x 25) Wire Anchors added to insert	21 APR 15	R.N.	21 APR 15	J.L.

Nett Weight Kg (nominal)	Gross Weight Kg (nominal)
3.1	4.3



cathodicanodes.com.au

Product Magnesium Anode	
Part no. CDM - 4.0S (M1C)	Scale 1 : 8
Drawing No: CD3936	Rev 2 Sheet 1 of 1
Drawn by: R Northey Date: 21 APR 2015	
All dimensions are in mm (nominal)	