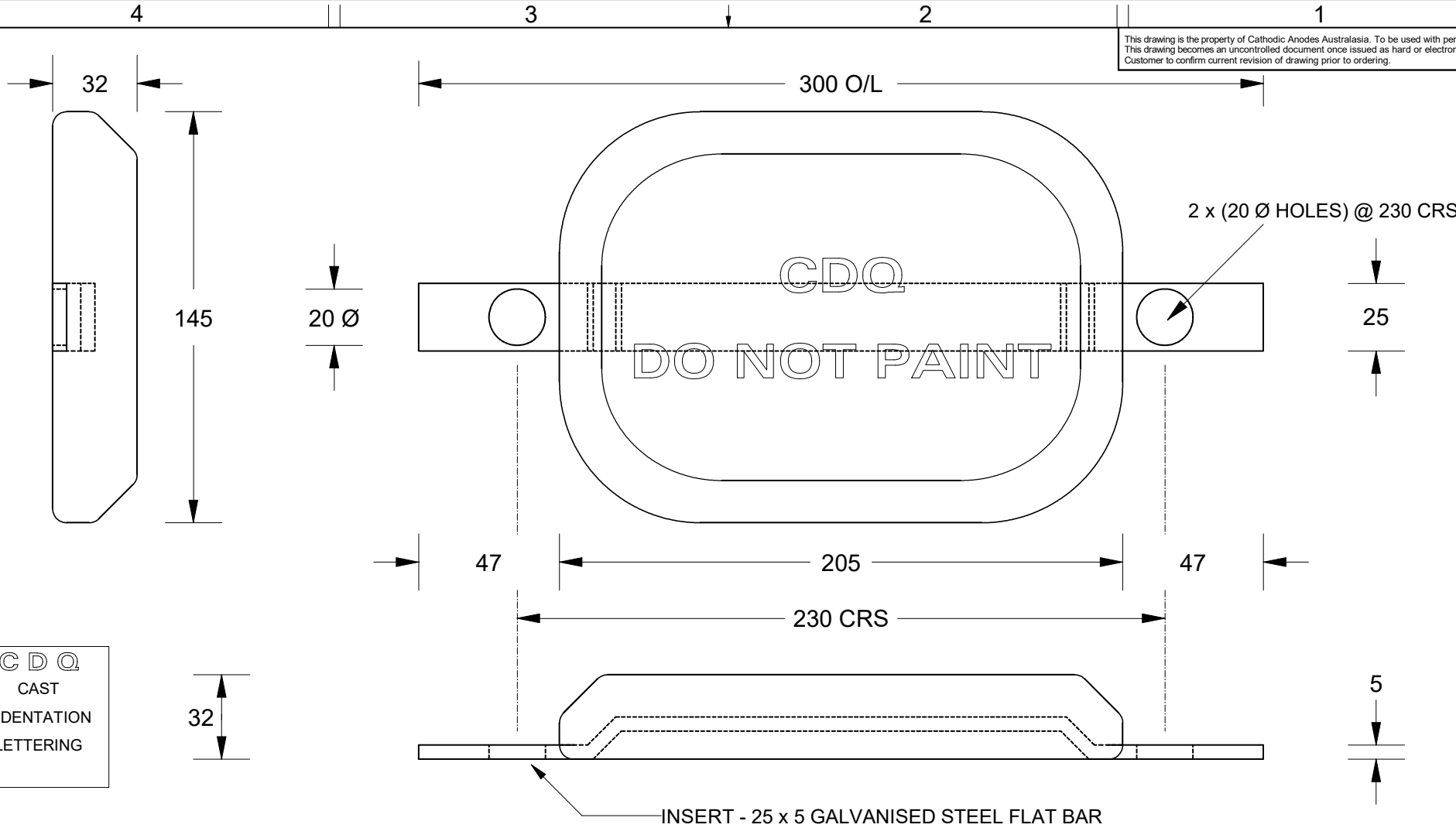


This drawing is the property of Cathodic Anodes Australasia. To be used with permission only. This drawing becomes an uncontrolled document once issued as hard or electronic copy. Customer to confirm current revision of drawing prior to ordering.



CDQ
CAST
INDENTATION
LETTERING

Chemical Composition Limits		Alloy:
Standard: AS2239* (Most current revision)		Z1
Zinc		
Element	min.	max.
Cadmium	0.025	0.07
Aluminium	0.10	0.50
Silicon	-	0.005
Copper	-	0.005
Iron	-	0.005
Lead	-	0.006
Other Impurities		
- each	-	0.005
- total	-	0.02
Zinc	remainder	

* Corresponds to MIL-DTL-18001L alloy composition

- Notes
1. Anodes are cast to comply with CAA's standard casting tolerances
 2. All sharp edges removed for safe handling
 3. Anode insert material to meet relevant Australian/International specifications



Nett Weight Kg (nominal)	Gross Weight Kg (nominal)
5.00	5.30

Rev	Details of Change(s)	Date	Drawn	Verified
1	For Quotation	19 December 2014	R.N.	J.L.

CAA
Cathodic Anodes Australasia
cathodicanodes.com.au

Product Zinc Anode		Scale 1 : 2	
Part no. CDZ8-86S Type 3		Rev 1	Sheet 1 of 1
Drawing No: CD3898		Drawn by: R Northey Date: 19 DEC 2014 Mould No: 102 Strap Sample: 06 (Mod)	

All dimensions are in mm (nominal)