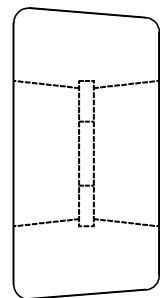
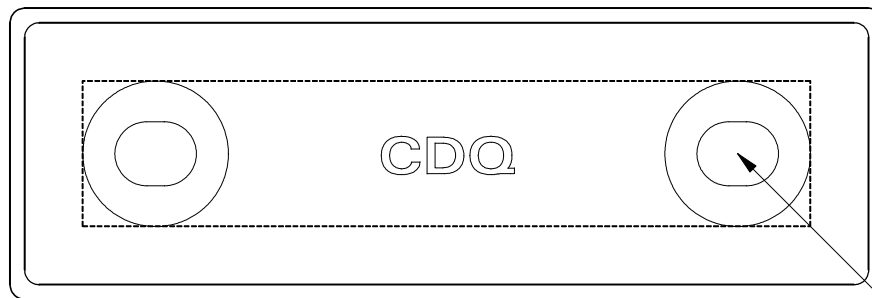


This drawing is the property of Cathodic Anodes Australasia. To be used with permission only. This drawing becomes an uncontrolled document once issued as hard or electronic copy. Customer to confirm current revision of drawing prior to ordering.

CDQ
CAST INDENTATION LETTERING



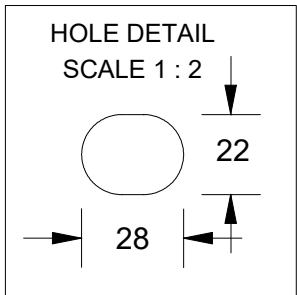
112



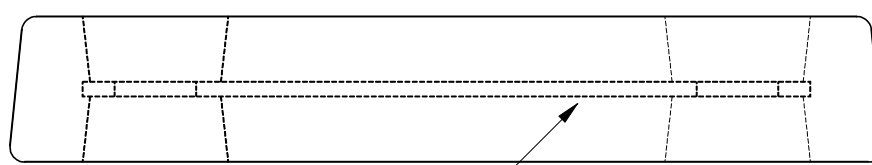
50

2 x (22 Ø x 28) Slotted Holes @ 200 mm Centres

200 CRS



50



INSERT - 250 x 50 x 3 MILD STEEL FLAT BAR

24
3 23

Chemical Composition Limits		Alloy:
Standard: AS2239* (Most current revision)		Z1
Zinc		
Element	min.	max.
Cadmium	0.025	0.07
Aluminium	0.10	0.50
Silicon	-	0.005
Copper	-	0.005
Iron	-	0.005
Lead	-	0.006
Other Impurities		
- each	-	0.005
- total	-	0.02
Zinc	remainder	

* Corresponds to MIL-DTL-18001L alloy composition

Notes

- Anodes are cast to comply with CAA's standard casting tolerances
- All sharp edges removed for safe handling
- Anode insert material to meet relevant Australian/International specifications

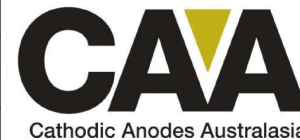


Casting Note: Use Spigots for CDZ8-124-200H

All dimensions are in mm (nominal)

Rev	Details of Change(s)	Date	Drawn	Verified
1	For Quotation	05 November 2014	R.N.	J.L.

Nett Weight Kg (nominal)	Gross Weight Kg (nominal)
8.30	8.60



Cathodic Anodes Australasia

cathodicanodes.com.au

Product	
Zinc Anode	
Part no.	Scale
CDZ8-124-2.0H Type 2	1 : 2.5
Drawing No: CD3885	Rev Sheet
	1 1 of 1
Drawn by: R Northey	Date: 05 NOV 2014
Mould No: 93	Strap Sample: Custom

