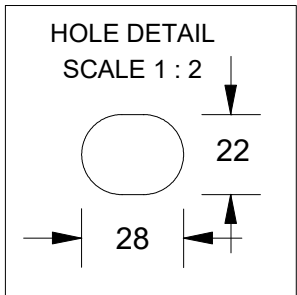
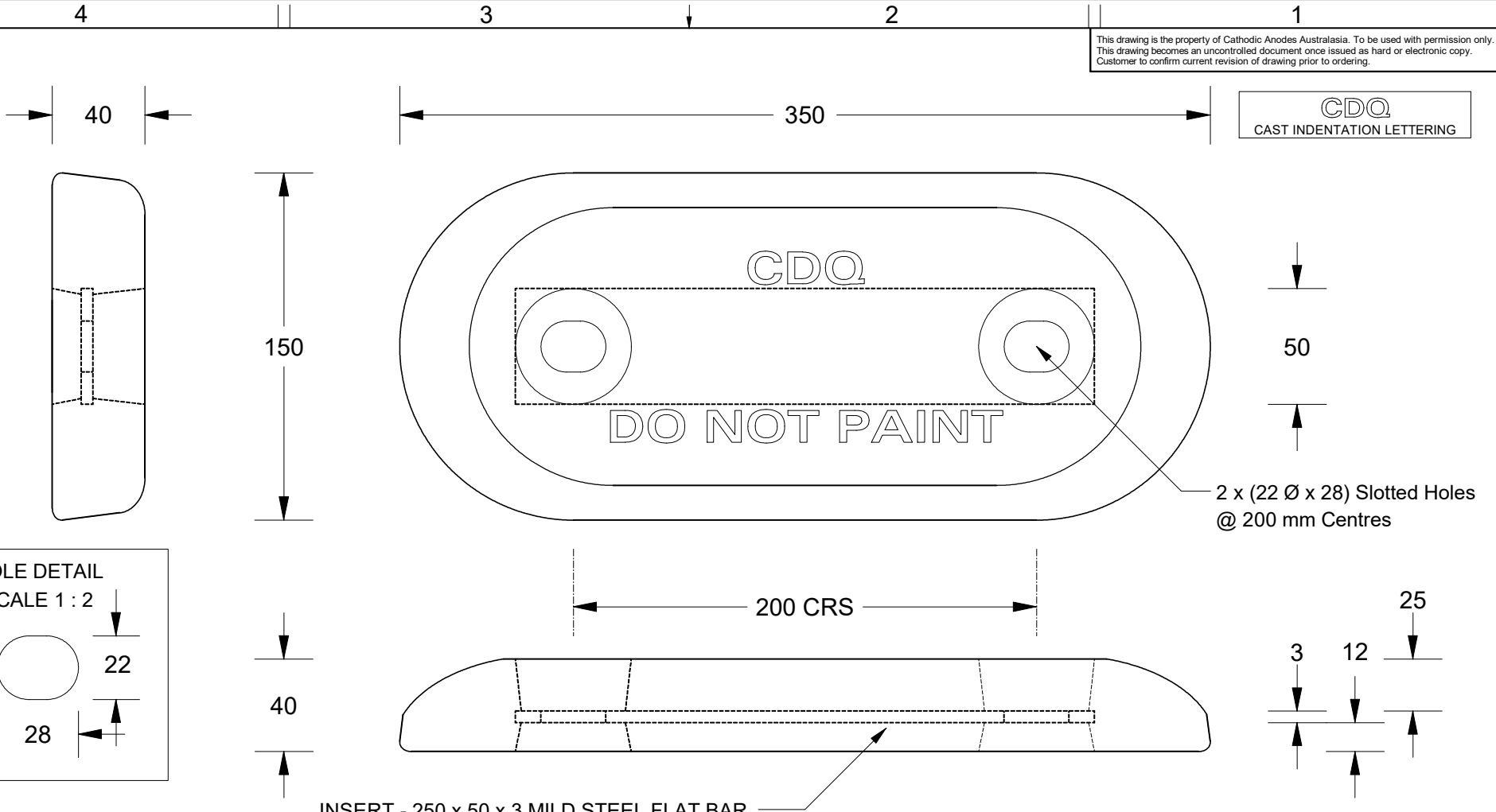


This drawing is the property of Cathodic Anodes Australasia. To be used with permission only. This drawing becomes an uncontrolled document once issued as hard or electronic copy. Customer to confirm current revision of drawing prior to ordering.

CDQ
CAST INDENTATION LETTERING



INSERT - 250 x 50 x 3 MILD STEEL FLAT BAR

- Notes
1. Anodes are cast to comply with CAA's standard casting tolerances
 2. All sharp edges removed for safe handling
 3. Anode insert material to meet relevant Australian/International specifications



Casting Note: Use Spigots for CDZ8-126-1.37H

All dimensions are in mm (nominal)

Chemical Composition Limits			Alloy: A1
Standard: AS2239 (Most current revision)			
Element	min.	max.	
Zinc	2.1	2.7	
Indium	0.017	0.025	
Cadmium	0.008	0.012	
Silicon	-	0.20	
Iron	-	0.12	
Copper	-	0.006	
Other Impurities			
- each	-	0.02	
- total	-	0.05	
Aluminium	remainder		

Rev	Details of Change(s)	Date	Drawn	Verified
1	For Quotation	05 November 2014	R.N.	J.L.

Nett Weight	Gross Weight
Kg (nominal)	Kg (nominal)
4.00	4.30
Date	Drawn
05 November 2014	R.N.



cathodicanodes.com.au

Product		Aluminium Anode	
Part no.	CDA-5H Type 1 (A1)		Scale
Drawing No: CD3884		Rev	Sheet
		1	1 of 1
Drawn by: R Northey	Date: 05 NOV 2014		
Mould No: 98	Strap Sample: Custom		