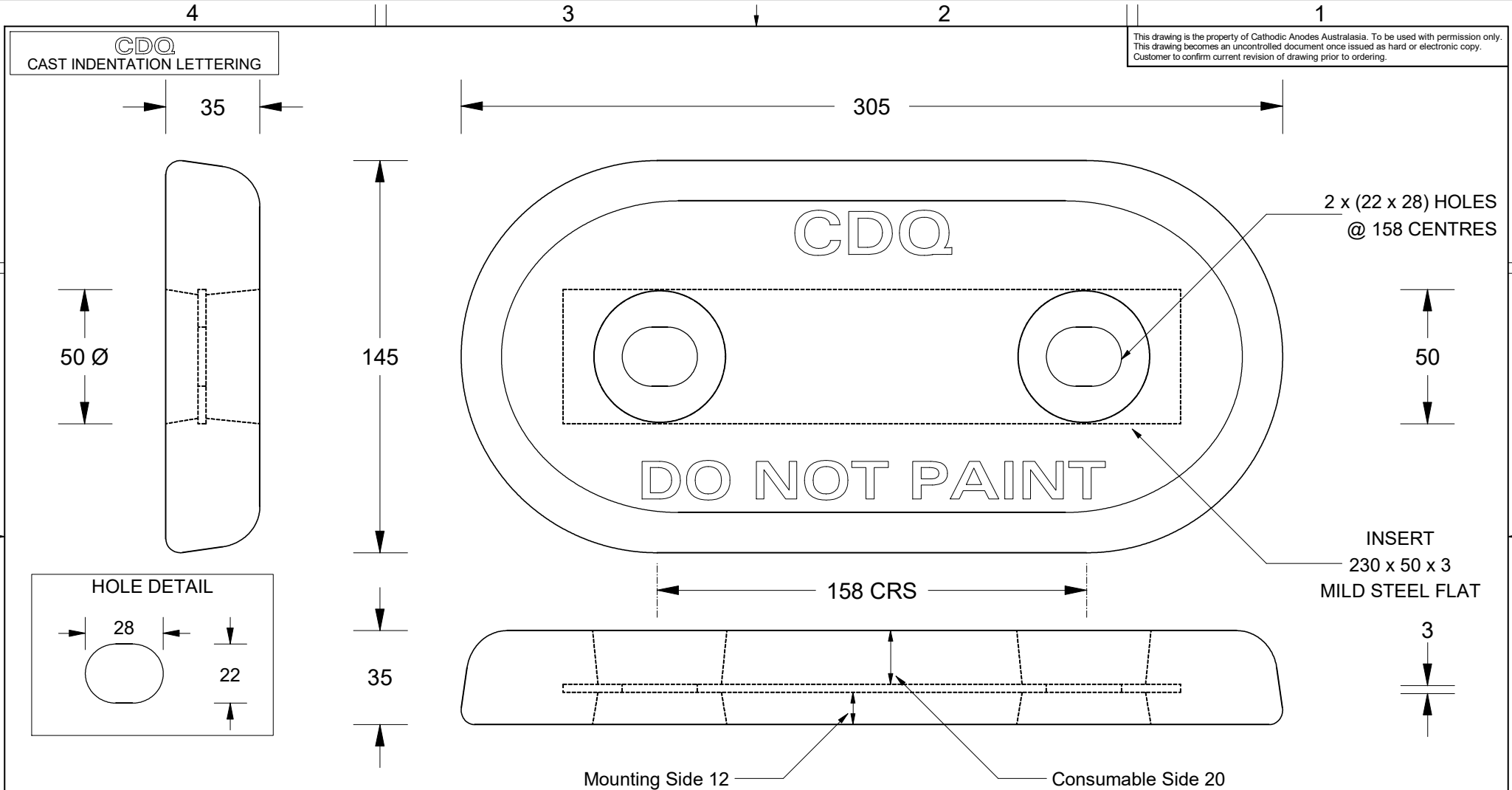


This drawing is the property of Cathodic Anodes Australasia. To be used with permission only.
 This drawing becomes an uncontrolled document once issued as hard or electronic copy.
 Customer to confirm current revision of drawing prior to ordering.



All dimensions are in mm (nominal)

- Notes
1. Anodes are cast to comply with CAA's standard casting tolerances
 2. All sharp edges removed for safe handling
 3. Anode insert material to meet relevant Australian/International specifications



Chemical Composition Limits			Alloy:
Standard: AS2239* (Most current revision)			Z1
Zinc			
Element	min.	max.	
Cadmium	0.025	0.07	
Aluminium	0.10	0.50	
Silicon	-	0.005	
Copper	-	0.005	
Iron	-	0.005	
Lead	-	0.006	
Other Impurities			
- each	-	0.005	
- total	-	0.02	
Zinc	remainder		

* Corresponds to MIL-DTL-18001L alloy composition

Rev	Details of Change(s)	Date	Drawn	Verified
1	For Manufacture	20 June 2014	R.N.	J.L.

Nett Weight Kg (nominal)	Gross Weight Kg (nominal)
8.00	8.30
Date	Drawn

CAA
Cathodic Anodes Australasia
cathodicanodes.com.au

Product	
Zinc Anode	
Part no.	Scale
CDZ8-126-1.37H Type 3	1 : 2
Drawing No: CD3794	Rev Sheet
	1 1 of 1
Drawn by: R Northey	Date: 20 JUN 2014
Mould No: 96	Strap Sample: 51

