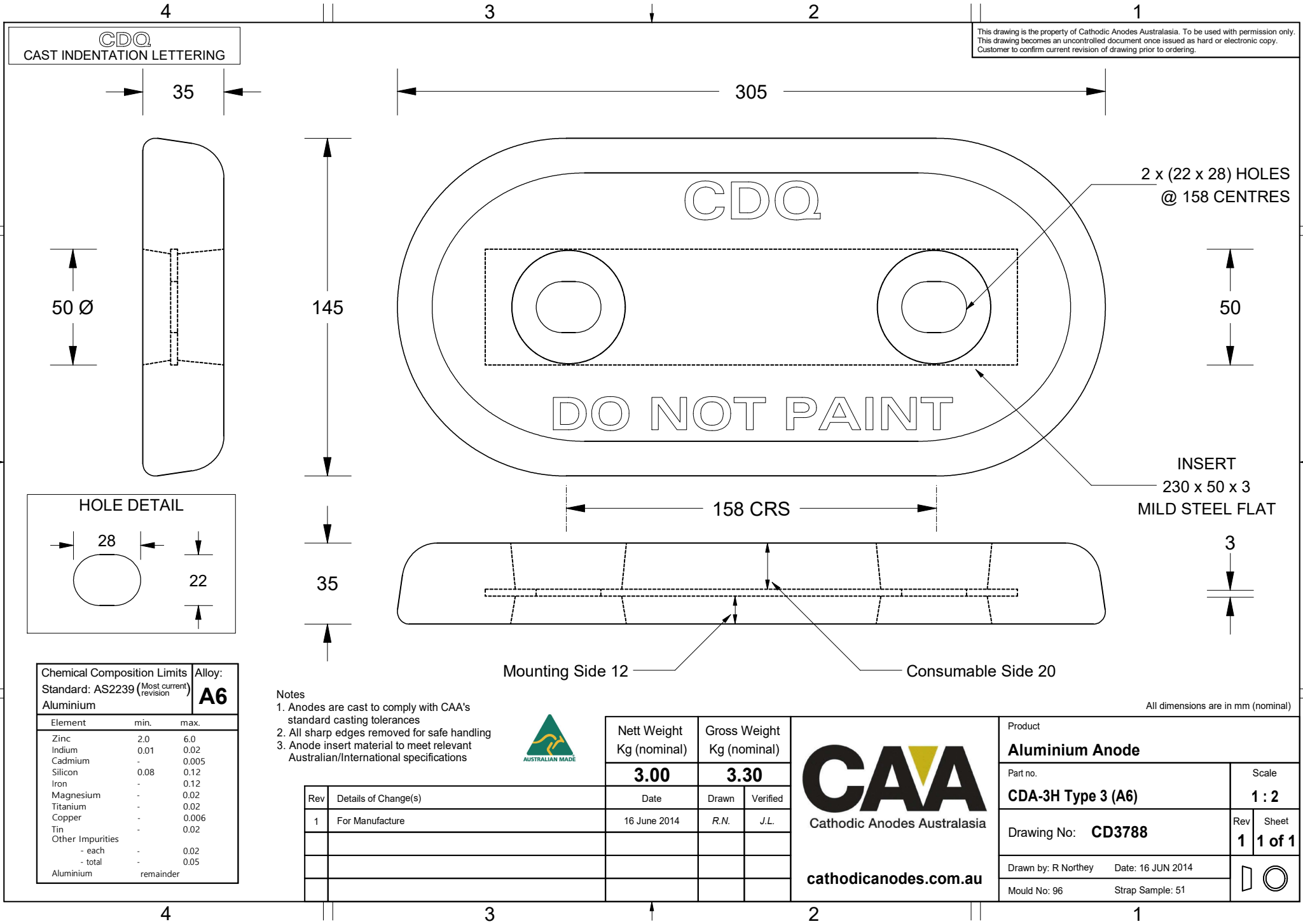


This drawing is the property of Cathodic Anodes Australasia. To be used with permission only. This drawing becomes an uncontrolled document once issued as hard or electronic copy. Customer to confirm current revision of drawing prior to ordering.



Chemical Composition Limits			Alloy: <b>A6</b>
Element	min.	max.	
Zinc	2.0	6.0	
Indium	0.01	0.02	
Cadmium	-	0.005	
Silicon	0.08	0.12	
Iron	-	0.12	
Magnesium	-	0.02	
Titanium	-	0.02	
Copper	-	0.006	
Tin	-	0.02	
Other Impurities	-	-	
- each	-	0.02	
- total	-	0.05	
Aluminium	remainder	-	

- Notes
1. Anodes are cast to comply with CAA's standard casting tolerances
  2. All sharp edges removed for safe handling
  3. Anode insert material to meet relevant Australian/International specifications



Nett Weight Kg (nominal)	Gross Weight Kg (nominal)	
<b>3.00</b>	<b>3.30</b>	
Date	Drawn	Verified
16 June 2014	R.N.	J.L.
Rev	Details of Change(s)	
1	For Manufacture	

**CAA**  
Cathodic Anodes Australasia  
cathodicanodes.com.au

Product <b>Aluminium Anode</b>	
Part no. <b>CDA-3H Type 3 (A6)</b>	Scale <b>1 : 2</b>
Drawing No: <b>CD3788</b>	Rev <b>1</b>
Sheet <b>1 of 1</b>	
Drawn by: R Northey	Date: 16 JUN 2014
Mould No: 96	Strap Sample: 51

All dimensions are in mm (nominal)