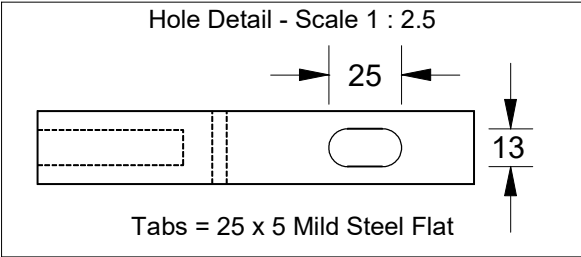
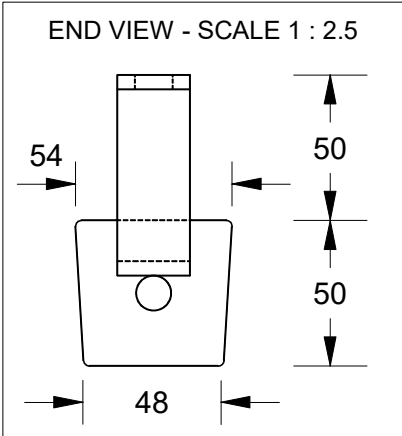
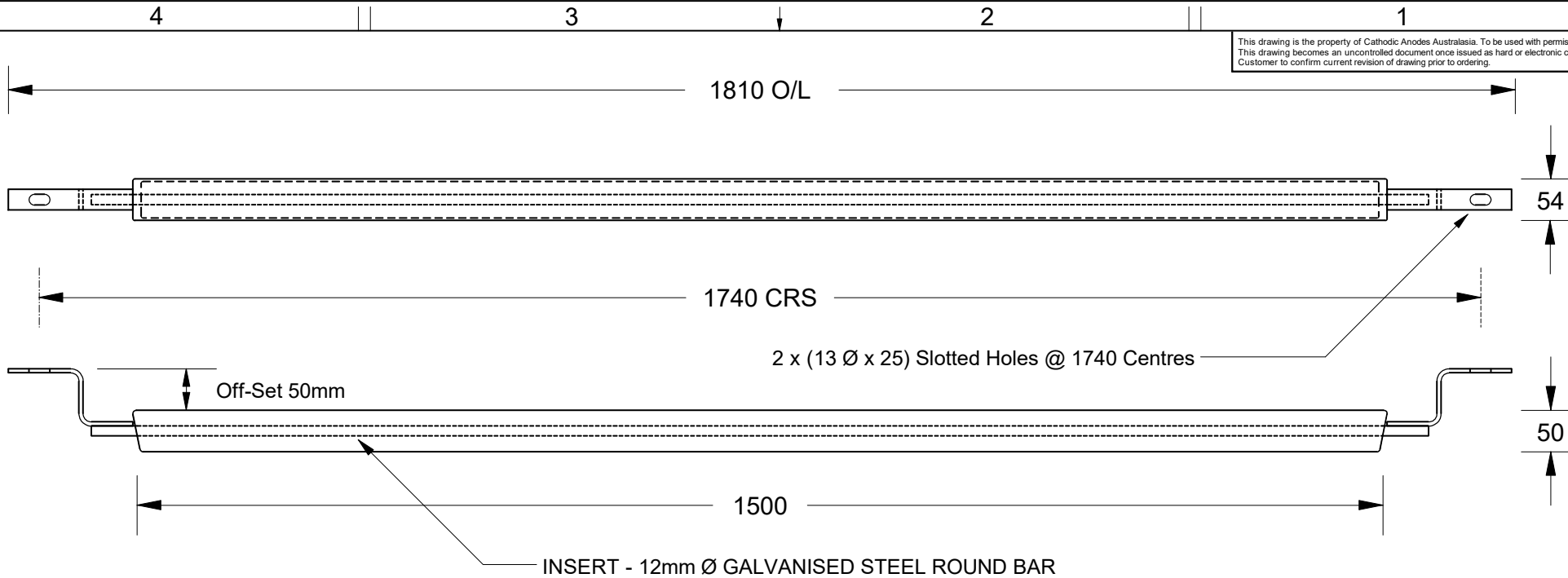


This drawing is the property of Cathodic Anodes Australasia. To be used with permission only.
 This drawing becomes an uncontrolled document once issued as hard or electronic copy.
 Customer to confirm current revision of drawing prior to ordering.



- Notes
1. Anodes are cast to comply with CAA's standard casting tolerances
 2. All sharp edges removed for safe handling
 3. Anode insert material to meet relevant Australian/International specifications

Chemical Composition Limits		Alloy:
Element	min.	max.
Standard: AS2239 (Most current revision)		M3
Magnesium. Low Potential		
Aluminium	5.3	6.7
Zinc	2.5	3.5
Manganese	0.25	0.40
Silicon	-	0.05
Copper	-	0.05
Iron	-	0.03
Nickel	-	0.003
Calcium	-	0.04
Other Impurities	-	-
- each	-	-
- total	-	0.30
Magnesium	remainder	

Rev	Details of Change(s)	Date	Initials	Verified	Initials
1	For Quotation	21 JAN 14	R.N.	21 JAN 14	J.L.

Nett Weight Kg (nominal)	Gross Weight Kg (nominal)
7.00	8.90



Cathodic Anodes Australasia

cathodicanodes.com.au

Product	
Magnesium Anode	
Part no.	Scale
CDM-7.0S (M3) 50mm Off-Set	1 : 7
Drawing No: CD3723	Rev Sheet
	1 1 of 1
Drawn by: R Northey Date: 21 JAN 2014	
All dimensions are in mm (nominal)	