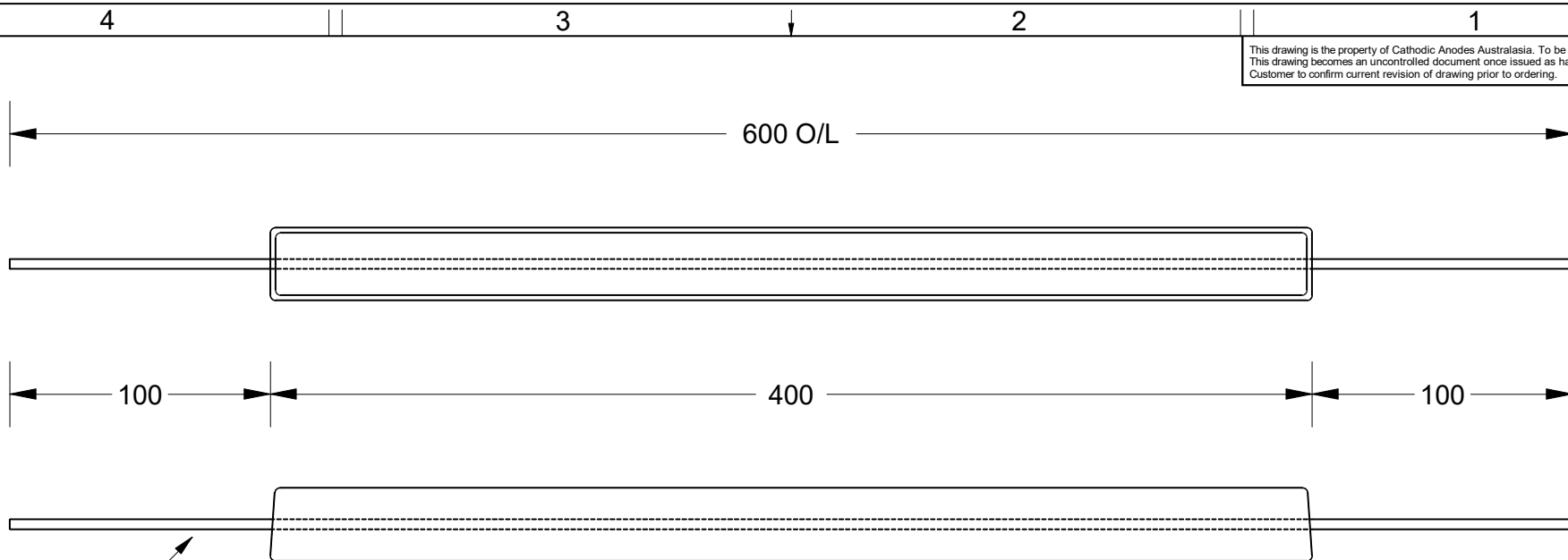
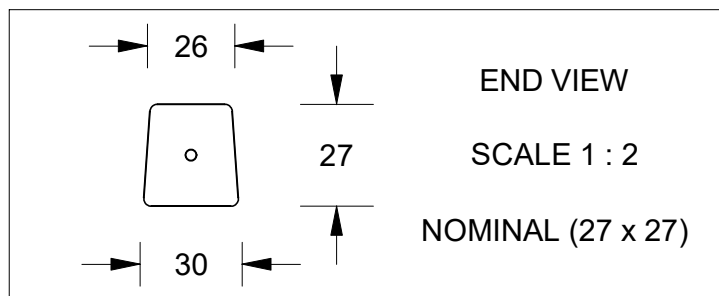


This drawing is the property of Cathodic Anodes Australasia. To be used with permission only. This drawing becomes an uncontrolled document once issued as hard or electronic copy. Customer to confirm current revision of drawing prior to ordering.



2.5mm Ø "Soft Gal" (Annealed) Steel Wire



Chemical Composition Limits			Alloy:
Standard: AS2239* (Most current revision)			<b>Z1</b>
Zinc			
Element	min.	max.	
Cadmium	0.025	0.07	
Aluminium	0.10	0.50	
Silicon	-	0.005	
Copper	-	0.005	
Iron	-	0.005	
Lead	-	0.006	
Other Impurities			
- each	-	0.005	
- total	-	0.02	
Zinc	remainder		

\* Corresponds to MIL-DTL-18001L alloy composition

Notes

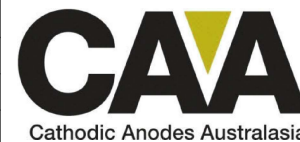
- Anodes are cast to comply with CAA's standard casting tolerances
- All sharp edges removed for safe handling
- Anode insert material to meet relevant Australian/International specifications



All dimensions are in mm (nominal)

Rev	Details of Change(s)	Date	Drawn	Verified
1	Cathodic Diecasting Original	N/A	N/A	N/A
2	2013 Catalogue Version (CAA Logo)	30 JAN 14	R.N.	R.G.
3	2.5mm Ø "Soft Gal" (Annealed) Steel Wire	27 JAN 16	R.N.	J.L.

Nett Weight Kg (nominal)	Gross Weight Kg (nominal)
<b>N/A</b>	<b>1.90</b>



cathodicanodes.com.au

Product <b>Zinc Anode</b>		Scale <b>1 : 2.5</b>	
Part no. <b>CDZ7-1611</b>		Rev <b>3</b>	Sheet <b>1 of 1</b>
Drawing No: <b>CD3721</b>		Date: 27 JAN 2016	
Drawn by: R Northey		Mould No: 53	

