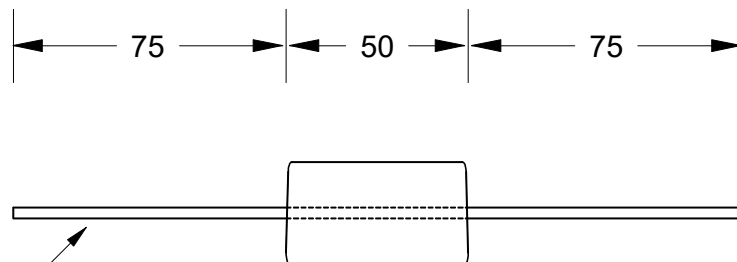
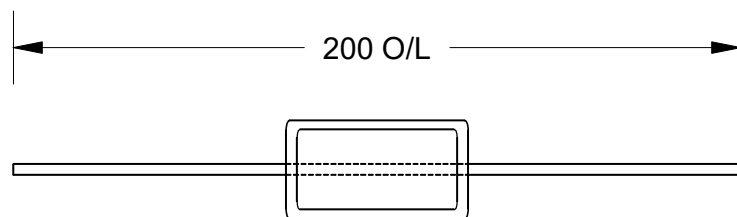
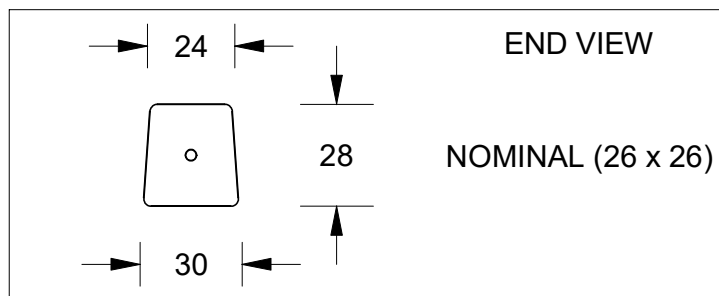


This drawing is the property of Cathodic Anodes Australasia. To be used with permission only.
 This drawing becomes an uncontrolled document once issued as hard or electronic copy.
 Customer to confirm current revision of drawing prior to ordering.



2.5mm Ø "Soft Gal" (Annealed) Steel Wire



Chemical Composition Limits		Alloy:
Standard: AS2239* ^(Most current revision)		Z1
Zinc		
Element	min.	max.
Cadmium	0.025	0.07
Aluminium	0.10	0.50
Silicon	-	0.005
Copper	-	0.005
Iron	-	0.005
Lead	-	0.006
Other Impurities		
- each	-	0.005
- total	-	0.02
Zinc	remainder	

* Corresponds to MIL-DTL-18001L alloy composition

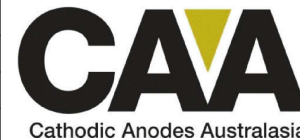
Notes

1. Anodes are cast to comply with CAA's standard casting tolerances
2. All sharp edges removed for safe handling
3. Anode insert material to meet relevant Australian/International specifications



Rev	Details of Change(s)	Date	Drawn	Verified
1	Cathodic Diecasting Original	N/A	N/A	N/A
2	2013 Catalogue Version (CAA Logo)	30 JAN 14	R.N.	R.G.
3	2.5mm Ø "Soft Gal" (Annealed) Steel Wire	27 JAN 16	R.N.	J.L.

Nett Weight Kg (nominal)	Gross Weight Kg (nominal)
N/A	0.25



cathodicanodes.com.au

Product Zinc Anode		Scale 1 : 2	
Part no. CDZ7-211		Rev 3	Sheet 1 of 1
Drawing No: CD3719		Date: 27 JAN 2016	
Drawn by: R Northey		Mould No: 81	

All dimensions are in mm (nominal)