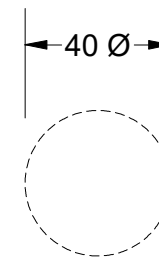
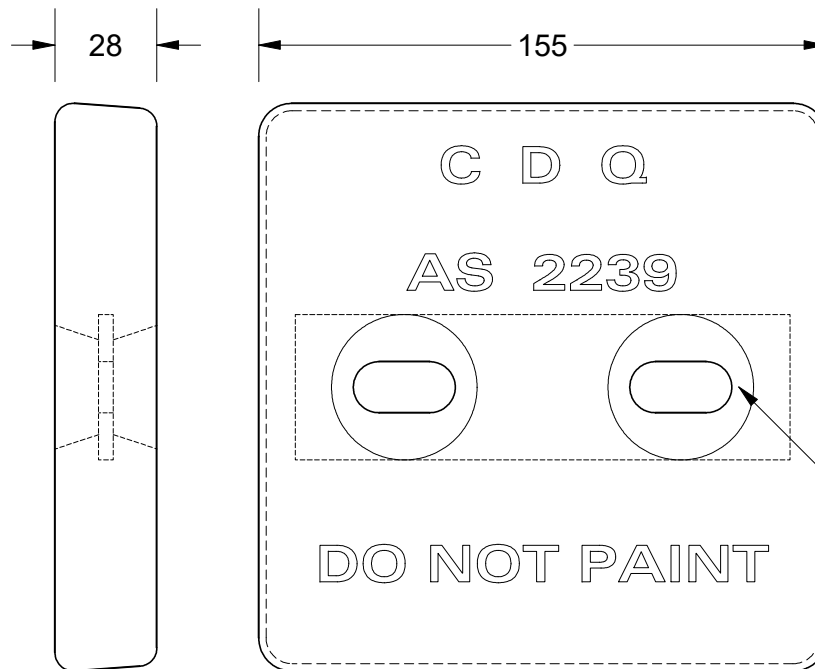
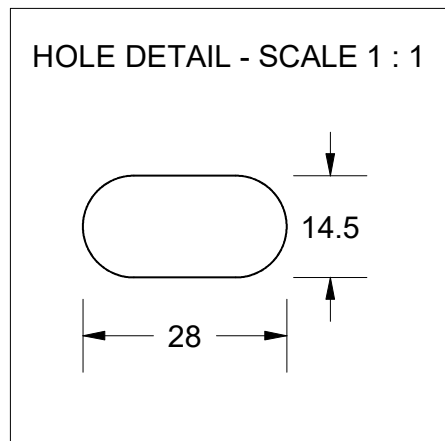
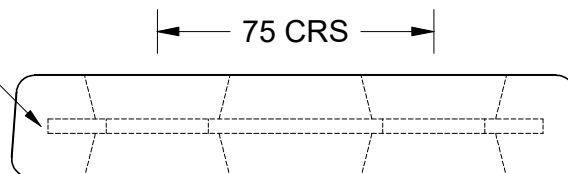


This drawing is the property of Cathodic Anodes Australasia. To be used with permission only.
 This drawing becomes an uncontrolled document once issued as hard or electronic copy.
 Customer to confirm current revision of drawing prior to ordering.



2 x (14.5 Ø X 28)
 SLOTTED HOLES
 CENTRES = 75 mm
 DETAIL TOP LEFT

INSERT 40 x 3
 MILL FINISH



Tooling: Use CDZ2-84-75H Spigots - Top & Bottom

Chemical Composition Limits			Alloy: Z1
Standard: AS2239* (Most current revision)			
Zinc			
Element	min.	max.	
Cadmium	0.025	0.07	
Aluminium	0.10	0.50	
Silicon	-	0.005	
Copper	-	0.005	
Iron	-	0.005	
Lead	-	0.006	
Other Impurities			
- each	-	0.005	
- total	-	0.02	
Zinc	remainder		

* Corresponds to MIL-DTL-18001L alloy composition

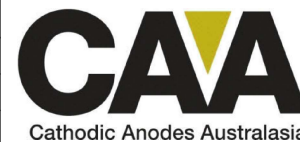
Notes

1. Anodes are cast to comply with CAA's standard casting tolerances
2. All sharp edges removed for safe handling
3. Anode insert material to meet relevant Australian/International specifications



Rev	Details of Change(s)	Date	Drawn	Verified
1	For Manufacture	23 OCT 13	R.N.	J.L.
2	Mould No & Insert (Strap Sample No) Added	18 SEP 18	R.N.	S.P.

Nett Weight Kg (nominal)	Gross Weight Kg (nominal)
3.70	3.85



Cathodic Anodes Australasia

cathodicanodes.com.au

Product Zinc Anode			
Part no. CDZ1-66-1H Type 2		Scale 1 : 2	
Drawing No: CD3684		Rev 2	Sheet 1 of 1
Drawn by: R Northey		Date: 18 SEP 2018	
Mould No: 51		Insert: Strap Sample 23	

All dimensions are in mm (nominal)