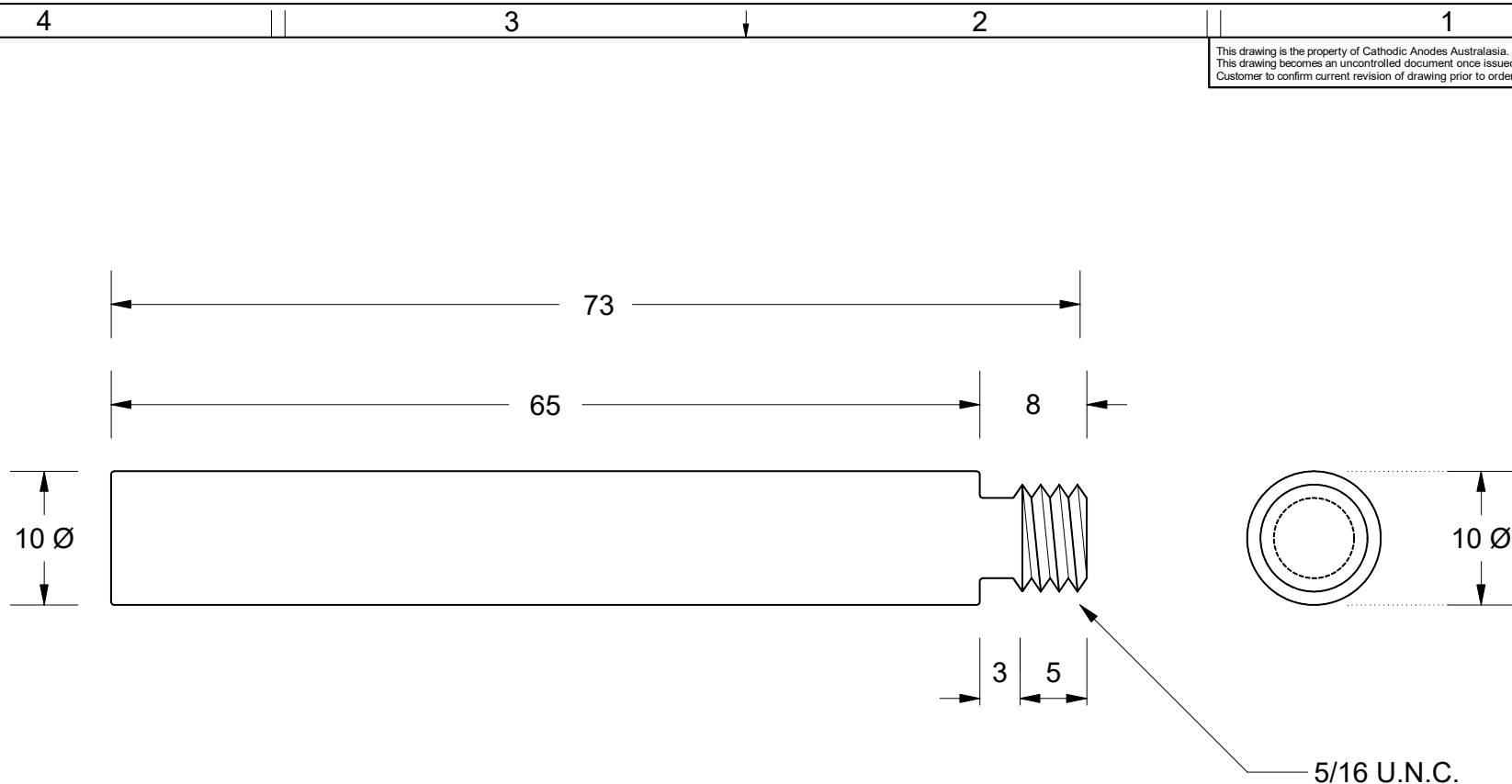


This drawing is the property of Cathodic Anodes Australasia. To be used with permission only.
 This drawing becomes an uncontrolled document once issued as hard or electronic copy.
 Customer to confirm current revision of drawing prior to ordering.



Chemical Composition Limits			Alloy: Z1
Standard: AS2239* (Most current revision)			
Zinc			
Element	min.	max.	
Cadmium	0.025	0.07	
Aluminium	0.10	0.50	
Silicon	-	0.005	
Copper	-	0.005	
Iron	-	0.005	
Lead	-	0.006	
Other Impurities			
- each	-	0.005	
- total	-	0.02	
Zinc	remainder		

* Corresponds to MIL-DTL-18001L alloy composition

Notes

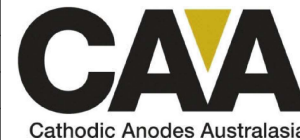
1. Anodes are cast to comply with CAA's standard casting tolerances
2. All sharp edges removed for safe handling
3. Anode insert material to meet relevant Australian/International specifications



All dimensions are in mm (nominal)

Rev		Details of Change(s)		Date	Drawn	Verified	Product					
1		For Manufacture		21 AUG 13	R.N.	R.G.	Zinc Anode					
							Part no. CDZ9-188					
							Drawing No: CD3640					
							Drawn by: R Northey Date: 21 AUG 2013					
							<table border="1"> <tr> <td>Scale</td> <td>Sheet</td> </tr> <tr> <td>2 : 1</td> <td>1 of 1</td> </tr> </table>		Scale	Sheet	2 : 1	1 of 1
Scale	Sheet											
2 : 1	1 of 1											

Nett Weight Kg (nominal)	Gross Weight Kg (nominal)
0.035	N/A



cathodicanodes.com.au

