

This drawing is the property of Cathodic Anodes Australasia. To be used with permission only. This drawing becomes an uncontrolled document once issued as hard or electronic copy. Customer to confirm current revision of drawing prior to ordering.

4

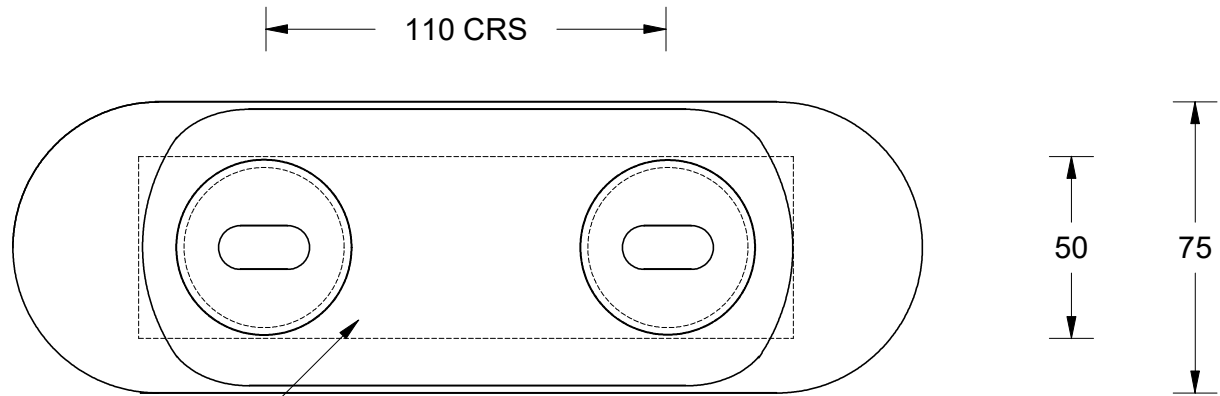
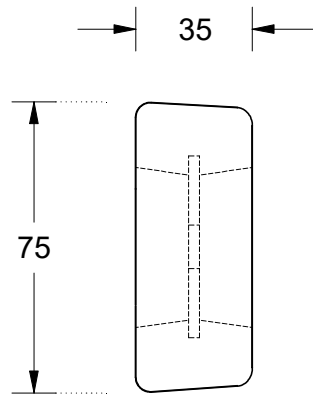
3

2

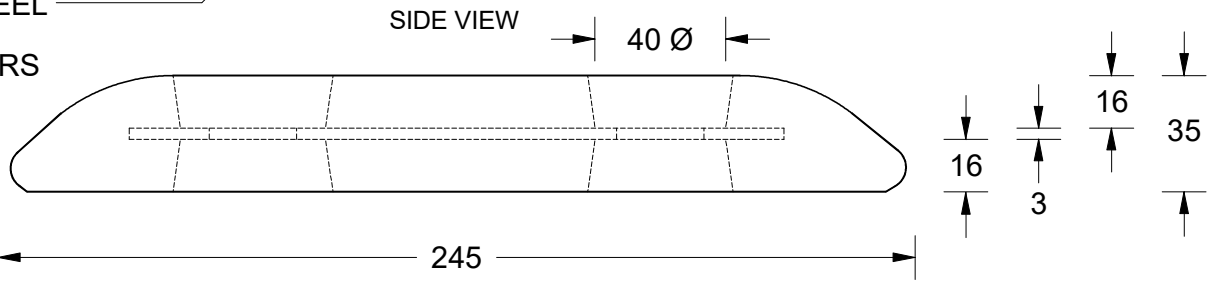
1

END VIEW

PLAN VIEW



INSERT (180 x 50 x 3) 316 STAINLESS STEEL
2 x (13 Ø X 25) SLOTTED HOLES @ 110 CRS

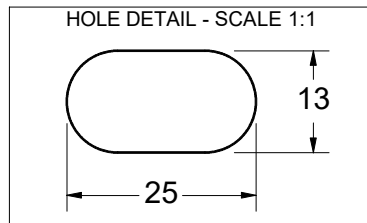


Notes

- Anodes are cast to comply with CAA's standard casting tolerances
- All sharp edges removed for safe handling
- Anode insert material to meet relevant Australian/International specifications

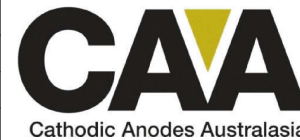
Chemical Composition Limits			Alloy: Z1
Standard: AS2239* (Most current revision)			
Zinc			
Element	min.	max.	
Cadmium	0.025	0.07	
Aluminium	0.10	0.50	
Silicon	-	0.005	
Copper	-	0.005	
Iron	-	0.005	
Lead	-	0.006	
Other Impurities			
- each	-	0.005	
- total	-	0.02	
Zinc	remainder		

* Corresponds to MIL-DTL-18001L alloy composition



Rev	Details of Change(s)	Date	Drawn	Verified
1	For Quotation	24 JUN 2013	R.N.	J.L.
2	Insert Centred	25 JUN 2013	R.N.	J.L.

Nett Weight Kg (nominal)	Gross Weight Kg (nominal)
3.50	3.70



cathodicanodes.com.au

Product Zinc Anode		Scale 1 : 2	
Part no. CDZ1-103-125H		Rev 2	Sheet 1 of 1
Drawing No: CD3600		Drawn by: R Northey Date: 24 JUN 2013	
Mould No:		Tooling:	



All dimensions are in mm (nominal)

4

3

2

1