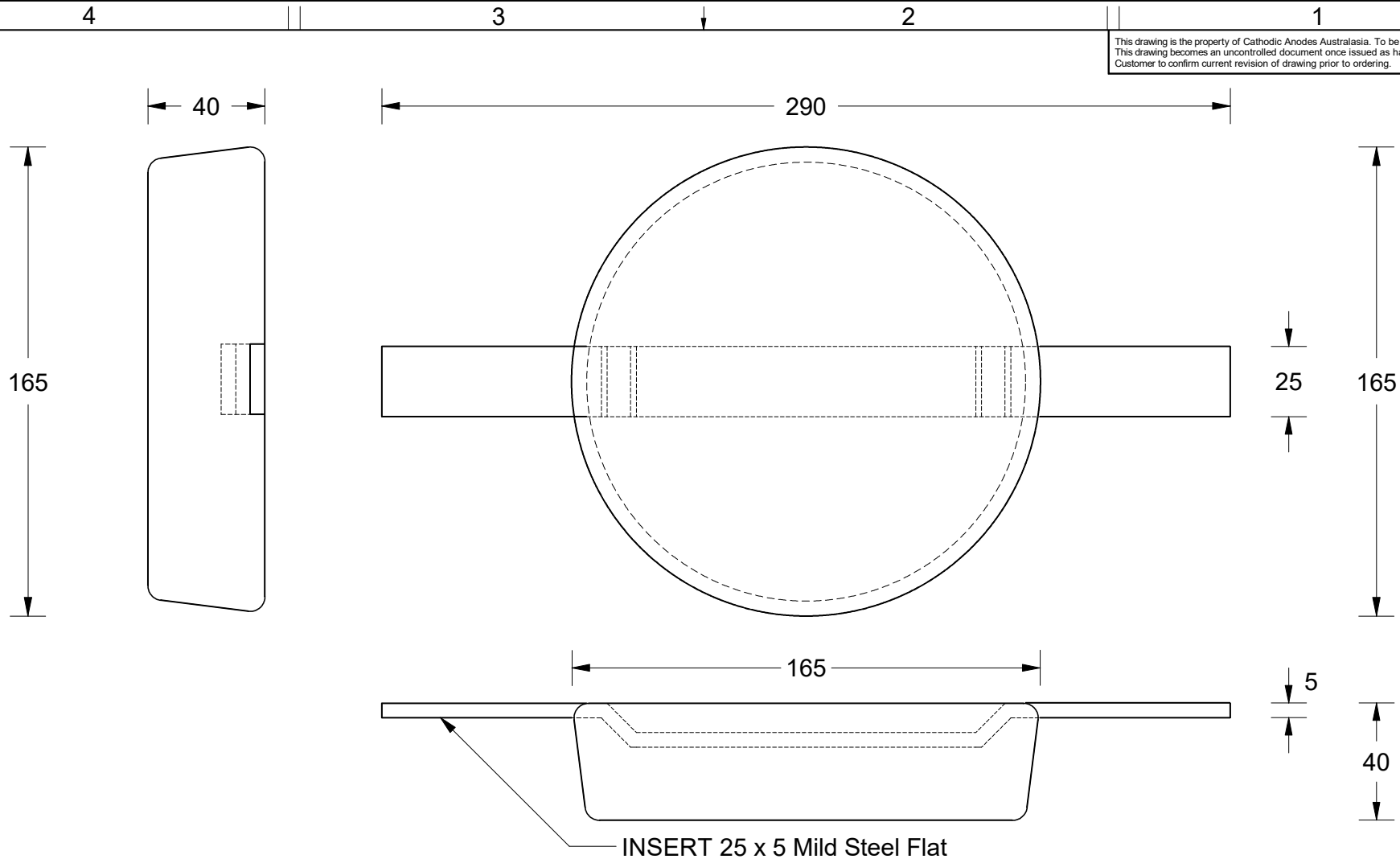


This drawing is the property of Cathodic Anodes Australasia. To be used with permission only.  
 This drawing becomes an uncontrolled document once issued as hard or electronic copy.  
 Customer to confirm current revision of drawing prior to ordering.



INSERT 25 x 5 Mild Steel Flat

All dimensions are in mm (nominal)

Chemical Composition Limits			Alloy: <b>A1</b>
Element	min.	max.	
Standard: AS2239 (Most current revision)			
Aluminium			
Zinc	2.1	2.7	
Indium	0.017	0.025	
Cadmium	0.008	0.012	
Silicon	-	0.20	
Iron	-	0.12	
Copper	-	0.006	
Other Impurities			
- each	-	0.02	
- total	-	0.05	
Aluminium	remainder		

- Notes
1. Anodes are cast to comply with CAA's standard casting tolerances
  2. All sharp edges removed for safe handling
  3. Anode insert material to meet relevant Australian/International specifications



Nett Weight Kg (nominal)	Gross Weight Kg (nominal)
<b>2.25</b>	<b>2.70</b>

**CAA**  
Cathodic Anodes Australasia

[cathodicanodes.com.au](http://cathodicanodes.com.au)

Rev	Details of Change(s)	Date	Drawn	Verified
1	For Quotation	22 May 2013	R.N.	R.G.

Product <b>Aluminium Anode</b>	
Part no. <b>CDA - 165 Dia x 40</b>	Scale <b>1 : 2</b>
Drawing No: <b>CD3585</b>	Rev 1 Sheet 1 of 1
Drawn by: R Northey Date: 22 MAY 2013	
Mould No: X Tooling:	