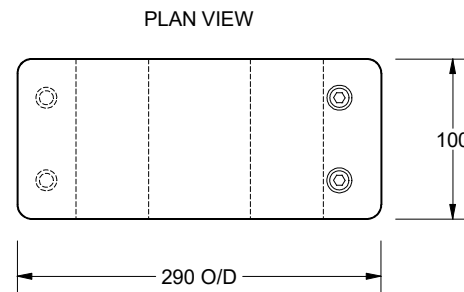
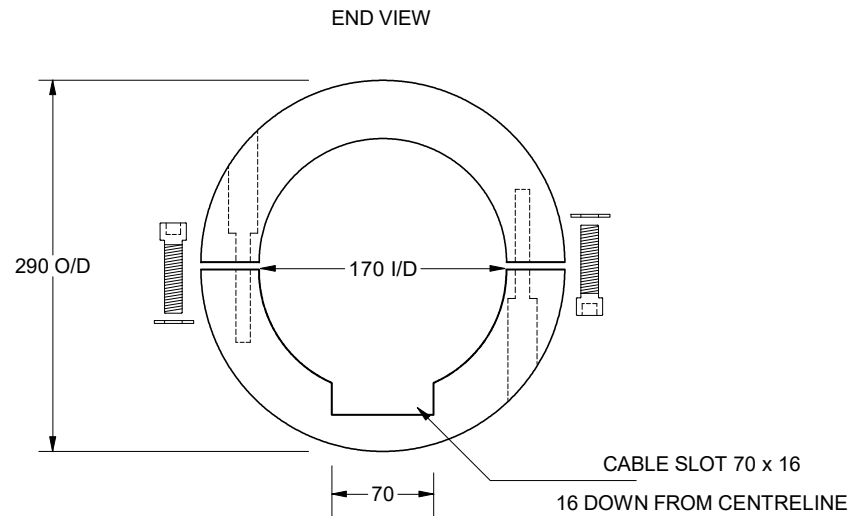
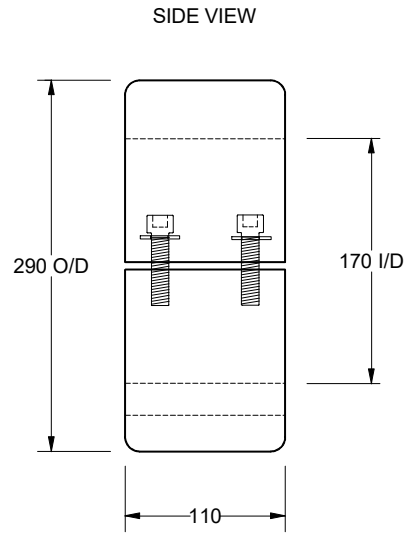


This drawing is the property of Cathodic Anodes Australasia. To be used with permission only.
 This drawing becomes an uncontrolled document once issued as hard or electronic copy.
 Customer to confirm current revision of drawing prior to ordering.

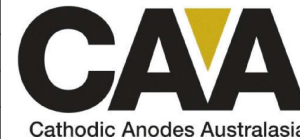


FASTENING
 4 x (M12 x 75 S/S)
 SOCKET HEAD CAP SCREWS
 c/w S/S INTERNAL TOOTH WASHERS

- Notes
1. Anodes are cast to comply with CAA's standard casting tolerances
 2. All sharp edges removed for safe handling
 3. Anode insert material to meet relevant Australian/International specifications



Nett Weight Kg (nominal)	Gross Weight Kg (nominal)
30.8	31.0



cathodicanodes.com.au

Product Zinc Anode		Scale NTS	
Part no. CDZ4-670 Type 1		Rev 1	Sheet 1 of 1
Drawing No: CD3578		Date: 09 MAY 2013	
Drawn by: R Northey		Tooling: N/A	
Mould No: N/A		Date: 09 MAY 2013	

Chemical Composition Limits			Alloy:
Standard: AS2239* (Most current revision)			Z1
Zinc			
Element	min.	max.	
Cadmium	0.025	0.07	
Aluminium	0.10	0.50	
Silicon	-	0.005	
Copper	-	0.005	
Iron	-	0.005	
Lead	-	0.006	
Other Impurities			
- each	-	0.005	
- total	-	0.02	
Zinc	remainder		

* Corresponds to MIL-DTL-18001L alloy composition

DO NOT SCALE

All dimensions are in mm (nominal)