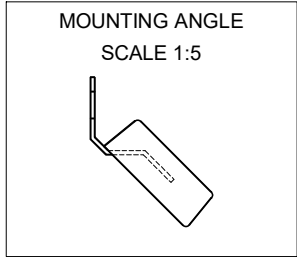
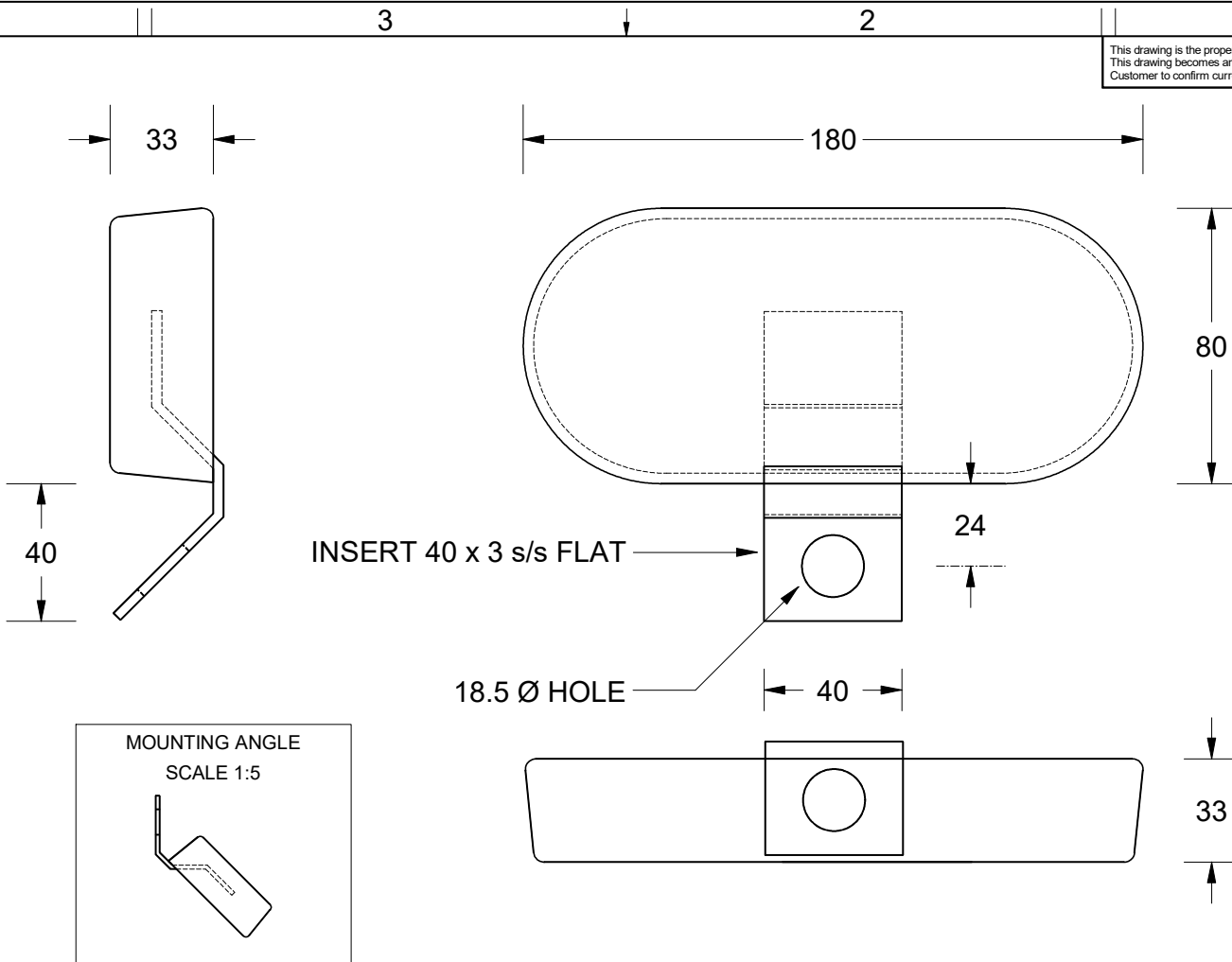


This drawing is the property of Cathodic Anodes Australasia. To be used with permission only.
 This drawing becomes an uncontrolled document once issued as hard or electronic copy.
 Customer to confirm current revision of drawing prior to ordering.



Chemical Composition Limits		Alloy:
Standard: AS2239* (Most current revision)		Z1
Zinc		
Element	min.	max.
Cadmium	0.025	0.07
Aluminium	0.10	0.50
Silicon	-	0.005
Copper	-	0.005
Iron	-	0.005
Lead	-	0.006
Other Impurities		
- each	-	0.005
- total	-	0.02
Zinc	remainder	

* Corresponds to MIL-DTL-18001L alloy composition

Notes

1. Anodes are cast to comply with CAA's standard casting tolerances
2. All sharp edges removed for safe handling
3. Anode insert material to meet relevant Australian/International specifications



Nett Weight Kg (nominal)	Gross Weight Kg (nominal)
2.60	2.70



Cathodic Anodes Australasia

cathodicanodes.com.au

All dimensions are in mm (nominal)

Product Zinc Anode		Scale 1 : 2	
Part no. CDZ2-73-125S Type 2		Rev 1	Sheet 1 of 1
Drawing No: CD3575			
Drawn by: R Northey Date: 06 MAY 2013			
Mould No: X	Tooling:		

Rev	Details of Change(s)	Date	Initials
1	For Quotation	06 MAY 13	R.N.