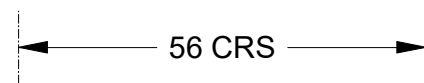
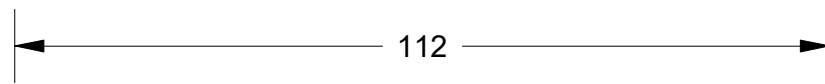
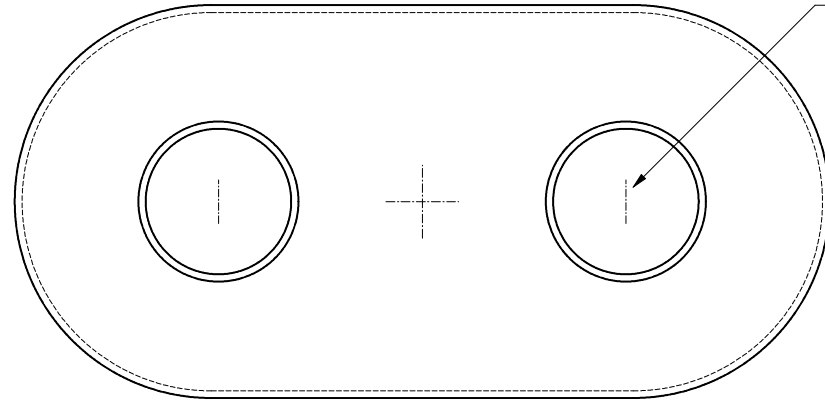
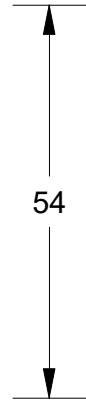
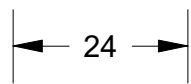
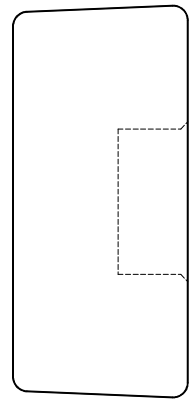
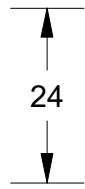
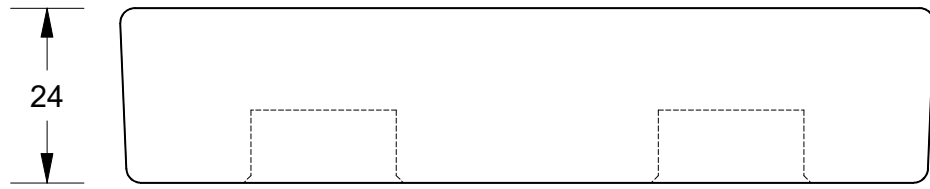


This drawing is the property of Cathodic Anodes Australasia. To be used with permission only.
 This drawing becomes an uncontrolled document once issued as hard or electronic copy.
 Customer to confirm current revision of drawing prior to ordering.



2 x 20 Ø RECESS
 10mm DEEP
 @ 56 CENTRES



Chemical Composition Limits			Alloy: M3
Element	min.	max.	
Aluminium	5.3	6.7	
Zinc	2.5	3.5	
Manganese	0.25	0.40	
Silicon	-	0.05	
Copper	-	0.05	
Iron	-	0.03	
Nickel	-	0.003	
Calcium	-	0.04	
Other Impurities			
- each	-	-	
- total	-	0.30	
Magnesium	remainder		

- Notes
1. Anodes are cast to comply with CAA's standard casting tolerances
 2. All sharp edges removed for safe handling
 3. Anode insert material to meet relevant Australian/International specifications

Nett Weight Kg (nominal)	Gross Weight Kg (nominal)
0.200	0.200



cathodicanodes.com.au

Rev	Details of Change(s)	Date	Initials
1	For Manufacture	23 JAN 13	R.N.

Product Magnesium Anode	
Part no. Intake Body Anode (DJ 994)	Scale 1 : 1
Drawing No: CD3545	Rev Sheet 1 1 of 1
Drawn by: R Northey Date: 23 JAN 2013	
All dimensions are in mm (nominal)	

