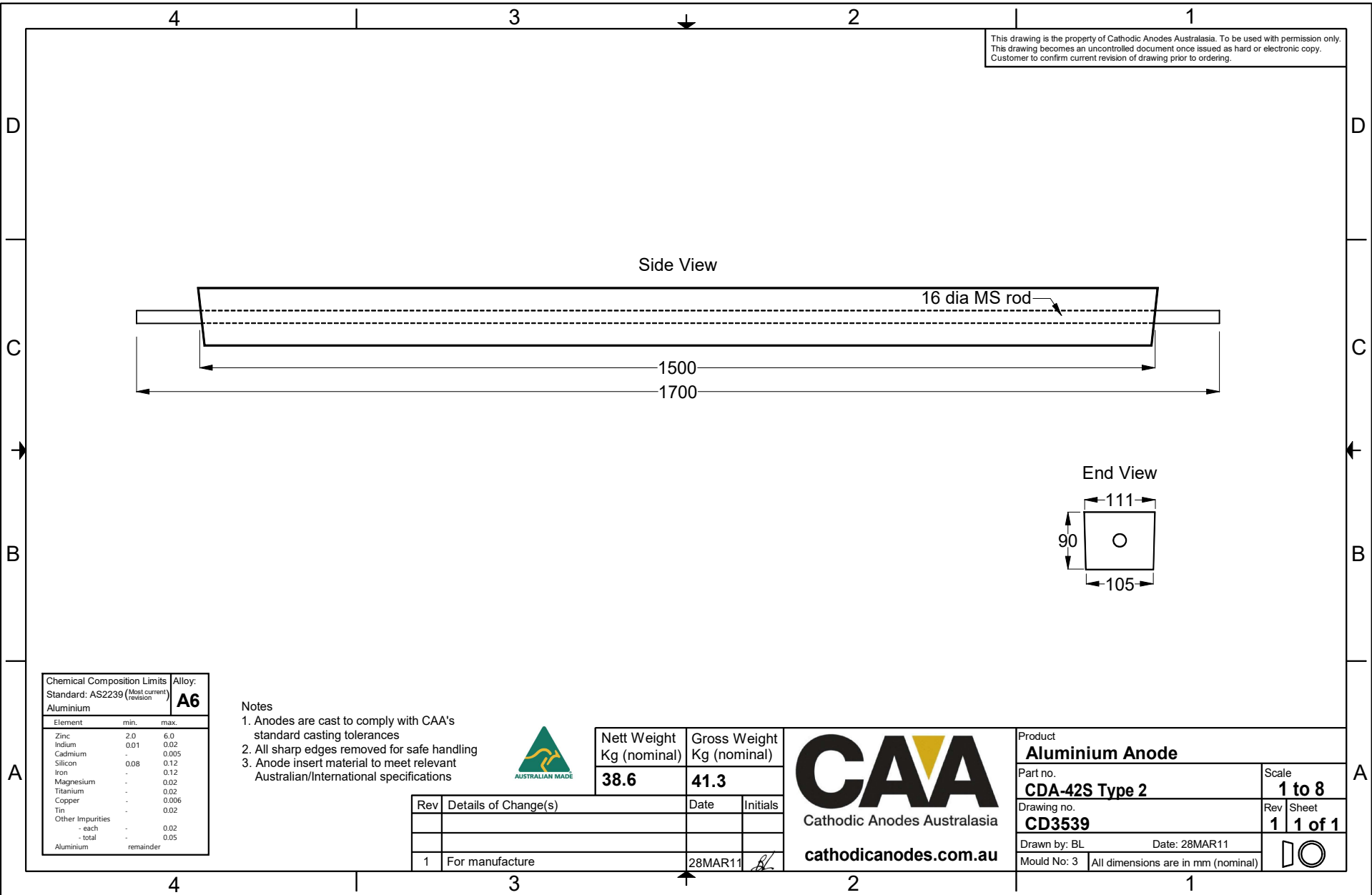


This drawing is the property of Cathodic Anodes Australasia. To be used with permission only.
 This drawing becomes an uncontrolled document once issued as hard or electronic copy.
 Customer to confirm current revision of drawing prior to ordering.



Chemical Composition Limits			Alloy:
Element	min.	max.	A6
Zinc	2.0	6.0	
Indium	0.01	0.02	
Cadmium	-	0.005	
Silicon	0.08	0.12	
Iron	-	0.12	
Magnesium	-	0.02	
Titanium	-	0.02	
Copper	-	0.006	
Tin	-	0.02	
Other Impurities	-	0.02	
- each	-	0.02	
- total	-	0.05	
Aluminium	-	remainder	

Notes

- Anodes are cast to comply with CAA's standard casting tolerances
- All sharp edges removed for safe handling
- Anode insert material to meet relevant Australian/International specifications



Nett Weight Kg (nominal)	Gross Weight Kg (nominal)
38.6	41.3

CAA
 Cathodic Anodes Australasia
cathodicanodes.com.au

Product Aluminium Anode		Scale 1 to 8
Part no. CDA-42S Type 2	Rev	Sheet
Drawing no. CD3539	1	1 of 1
Drawn by: BL	Date: 28MAR11	
Mould No: 3	All dimensions are in mm (nominal)	

Rev	Details of Change(s)	Date	Initials
1	For manufacture	28MAR11	BL