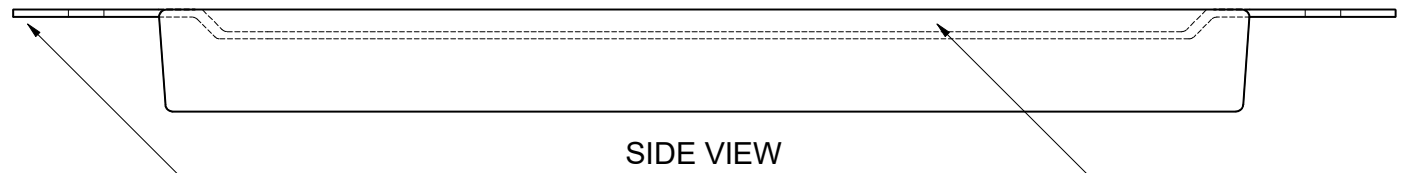
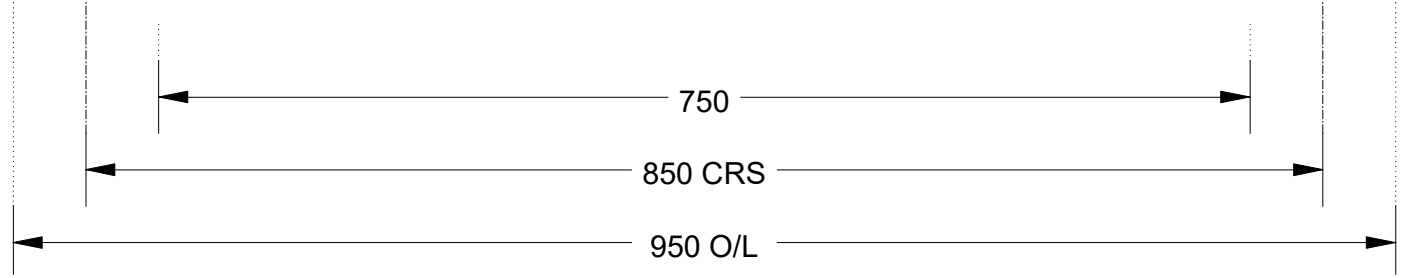
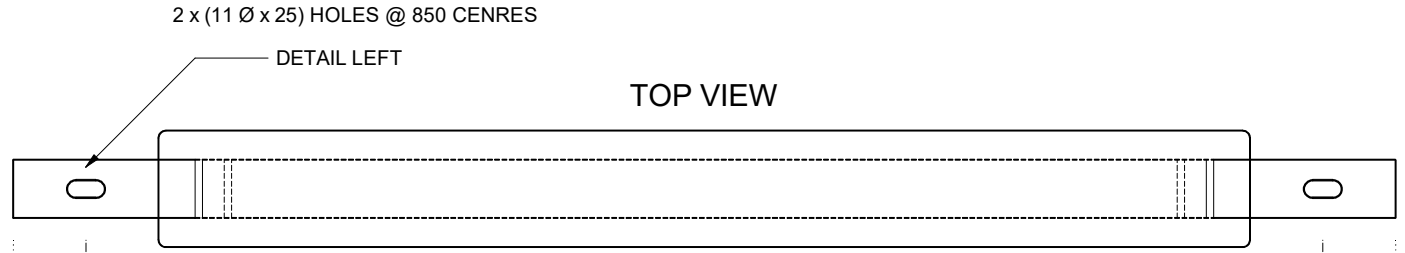
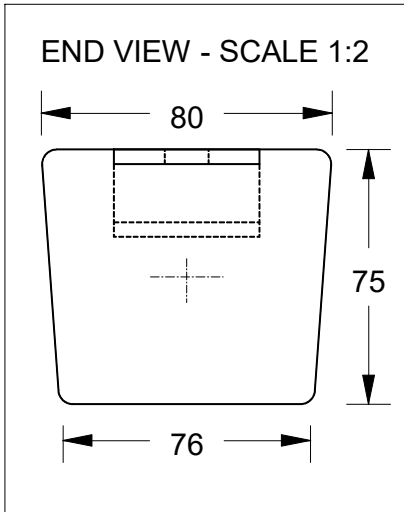
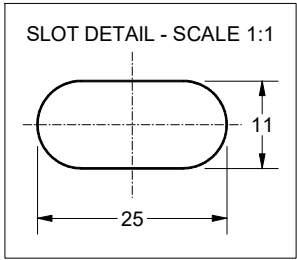


This drawing is the property of Cathodic Anodes Australasia. To be used with permission only.
 This drawing becomes an uncontrolled document once issued as hard or electronic copy.
 Customer to confirm current revision of drawing prior to ordering.



INSERT - 40 x 5 Mild Steel Flat Bar - Mill Finish

20mm Coverage

Chemical Composition Limits			Alloy:
Standard: AS2239* (Most current revision)			Z1
Zinc			
Element	min.	max.	
Cadmium	0.025	0.07	
Aluminium	0.10	0.50	
Silicon	-	0.005	
Copper	-	0.005	
Iron	-	0.005	
Lead	-	0.006	
Other Impurities			
- each	-	0.005	
- total	-	0.02	
Zinc	remainder		

* Corresponds to MIL-DTL-18001L alloy composition

- Notes**
- Anodes are cast to comply with CAA's standard casting tolerances
 - All sharp edges removed for safe handling
 - Anode insert material to meet relevant Australian/International specifications



Nett Weight Kg (nominal)	Gross Weight Kg (nominal)
30.2	31.7



Cathodic Anodes Australasia

cathodicanodes.com.au

Product Zinc Anode		Scale 1 : 5	
Part no. CDZ8-30S 29 Kg		Rev 1	Sheet 1 of 1
Drawing No: CD3530		Drawn by: R Northey Date: 08 JAN 2013	
All dimensions are in mm (nominal)		Mould No: 16	

Rev	Details of Change(s)	Date	Initials
1	For Quotation	08 JAN 13	R.N.