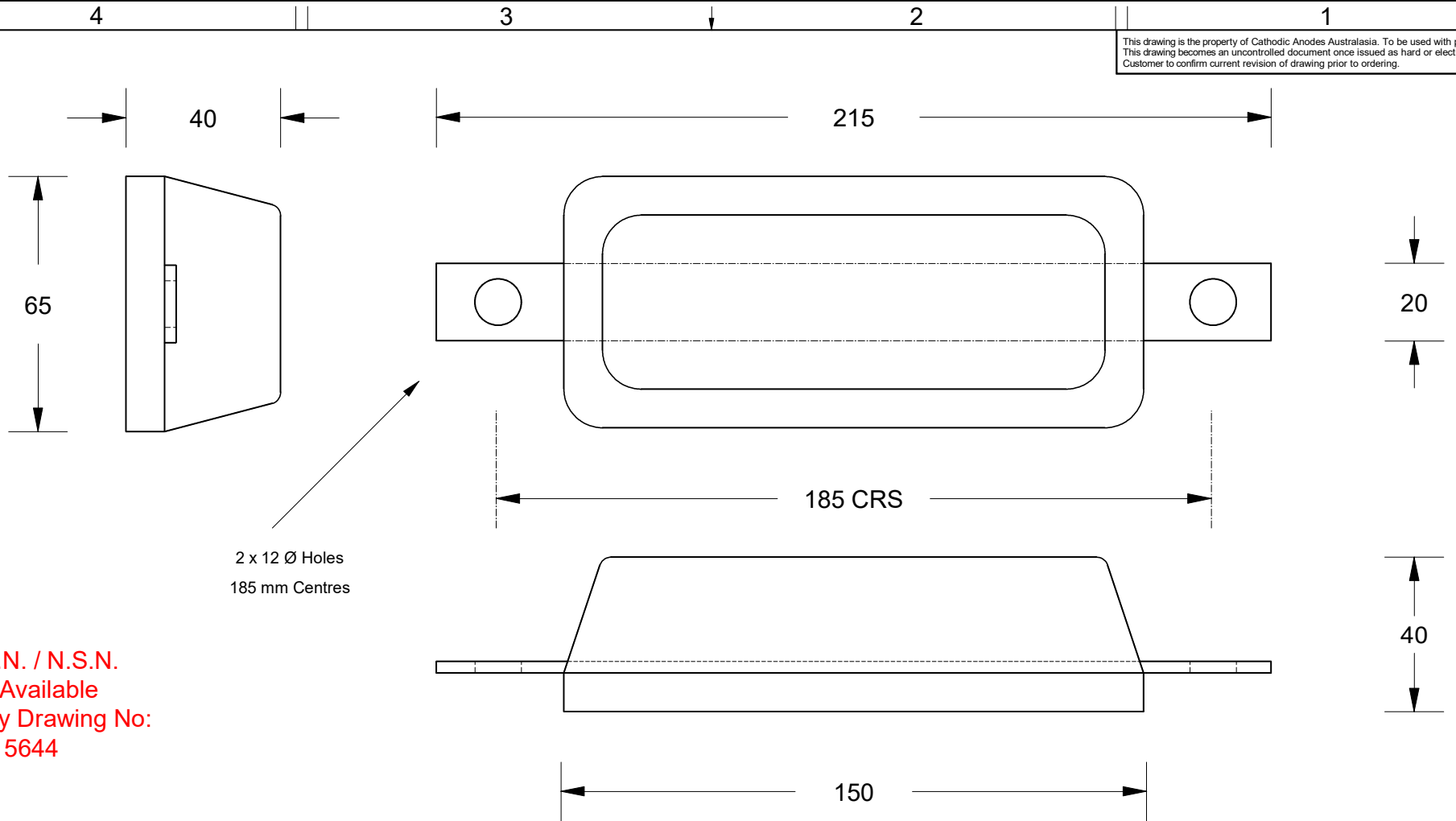


This drawing is the property of Cathodic Anodes Australasia. To be used with permission only.
 This drawing becomes an uncontrolled document once issued as hard or electronic copy.
 Customer to confirm current revision of drawing prior to ordering.



2 x 12 Ø Holes
 185 mm Centres

INSERT MATERIAL: 380 x 20 x 3 - Mild Steel AS3679.1 - GRADE 250 MIN

D.S.N. / N.S.N.
Not Available
Navy Drawing No:
A0 15644

Chemical Composition Limits			Alloy: A1
Standard: AS2239 (Most current revision)			
Aluminium			
Element	min.	max.	
Zinc	2.1	2.7	
Indium	0.017	0.025	
Cadmium	0.008	0.012	
Silicon	-	0.20	
Iron	-	0.12	
Copper	-	0.006	
Other Impurities			
- each	-	0.02	
- total	-	0.05	
Aluminium	remainder		

- Notes
1. Anodes are cast to comply with CAA's standard casting tolerances
 2. All sharp edges removed for safe handling
 3. Anode insert material to meet relevant Australian/International specifications



Rev	Details of Change(s)	Date	Drawn	Verified
1	For Manufacture	10 Dec 2012	R.N.	L.M.

CAA
 Cathodic Anodes Australasia
cathodicanodes.com.au

Product		Aluminium Anode	
Part no.	Navy Type 6	Scale	1 : 1.5
Drawing No:	CD3524	Rev	1
Drawn by: R Northey	Date: 10 DEC 2012	Sheet	1 of 1
Mould No:	Tooling:		

All dimensions are in mm (nominal)