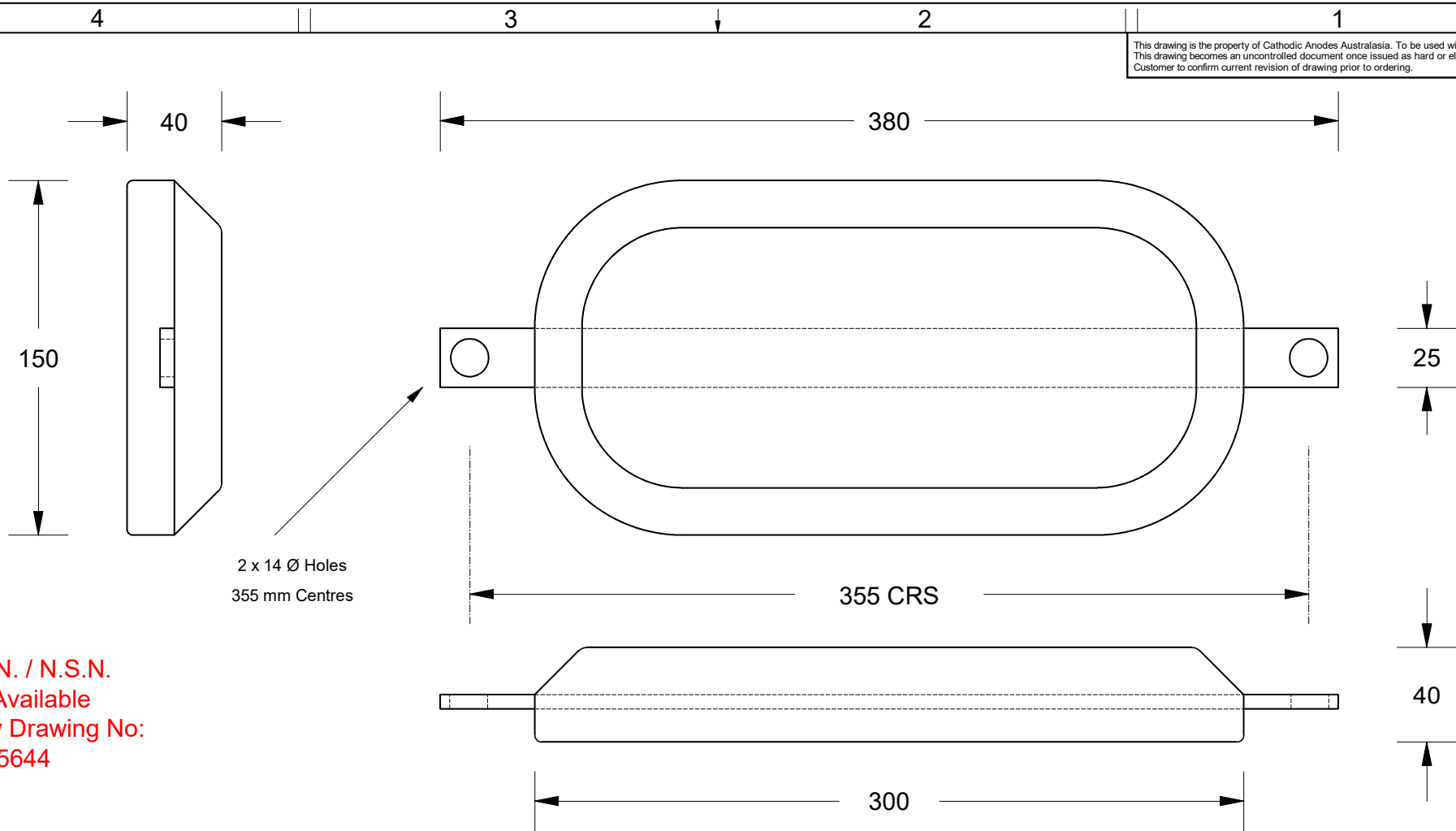


This drawing is the property of Cathodic Anodes Australasia. To be used with permission only. This drawing becomes an uncontrolled document once issued as hard or electronic copy. Customer to confirm current revision of drawing prior to ordering.



D.S.N. / N.S.N.  
Not Available  
Navy Drawing No:  
A0 15644

2 x 14 Ø Holes  
355 mm Centres

355 CRS

INSERT MATERIAL: 380 x 25 x 6 - Mild Steel AS3679.1 - GRADE 250 MIN

All dimensions are in mm (nominal)

Chemical Composition Limits			Alloy: <b>A1</b>
Standard: AS2239 (Most current revision)			
Aluminium			
Element	min.	max.	
Zinc	2.1	2.7	
Indium	0.017	0.025	
Cadmium	0.008	0.012	
Silicon	-	0.20	
Iron	-	0.12	
Copper	-	0.006	
Other Impurities			
- each	-	0.02	
- total	-	0.05	
Aluminium	remainder		

Notes

- Anodes are cast to comply with CAA's standard casting tolerances
- All sharp edges removed for safe handling
- Anode insert material to meet relevant Australian/International specifications



Rev	Details of Change(s)	Date	Drawn	Verified
1	For Manufacture	10 Dec 2012	R.N.	J.L.

Nett Weight Kg (nominal)	Gross Weight Kg (nominal)
<b>3.2</b>	<b>3.6</b>



Cathodic Anodes Australasia

[cathodicanodes.com.au](http://cathodicanodes.com.au)

Product <b>Aluminium Anode</b>		Scale <b>1 : 2.5</b>	
Part no. <b>Navy Type 5</b>		Rev <b>1</b>	Sheet <b>1 of 1</b>
Drawing No: <b>CD3523</b>		Drawn by: R Northey Date: 10 DEC 2012	
Mould No:		Tooling:	

