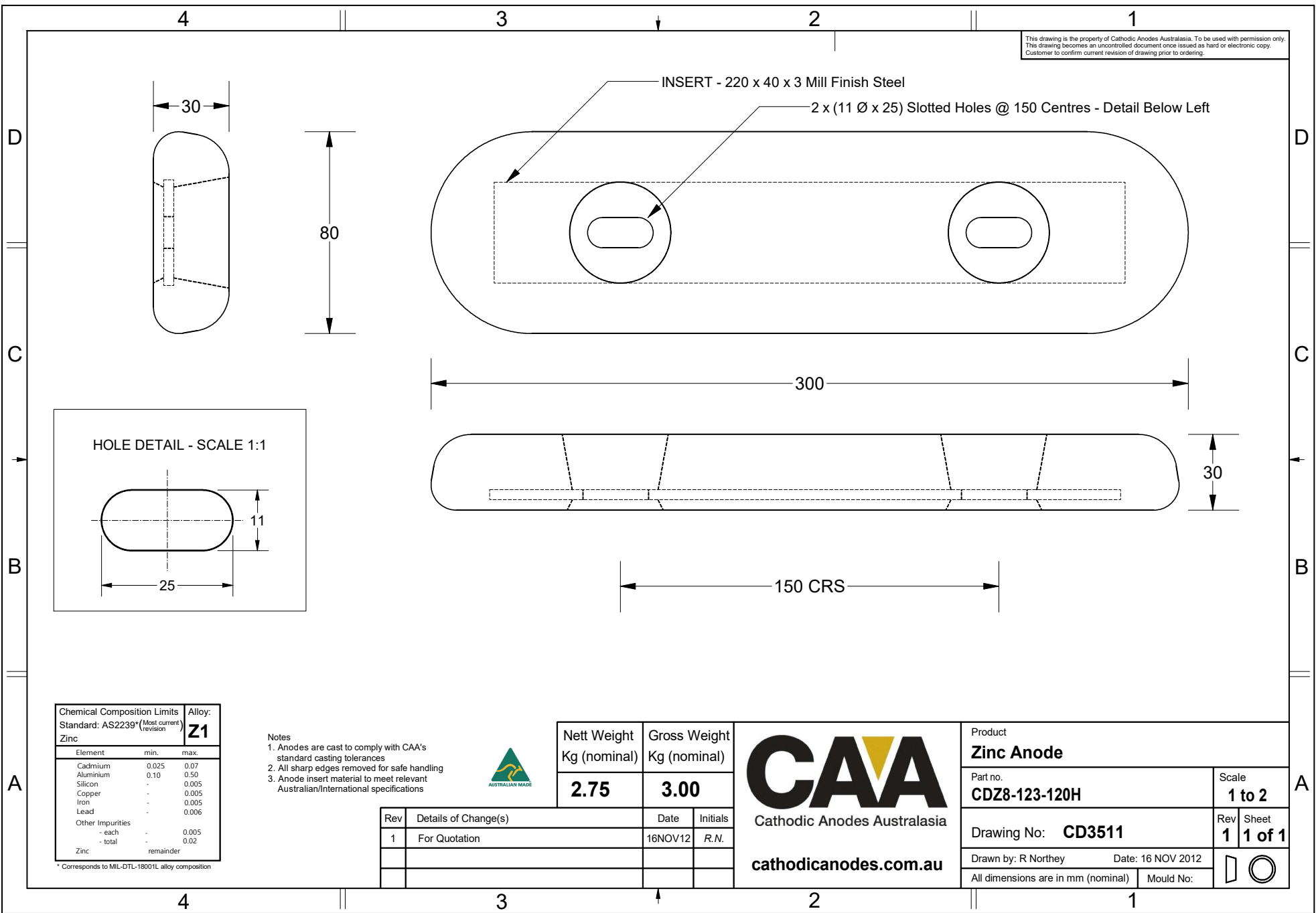


This drawing is the property of Cathodic Anodes Australasia. To be used with permission only.
 This drawing becomes an uncontrolled document once issued as hard or electronic copy.
 Customer to confirm current revision of drawing prior to ordering.



Chemical Composition Limits		Alloy:
Element	min.	max.
Standard: AS2239* (Most current revision)		Z1
Zinc		
Cadmium	0.025	0.07
Aluminium	0.10	0.50
Silicon	-	0.005
Copper	-	0.005
Iron	-	0.005
Lead	-	0.006
Other Impurities		
- each	-	0.005
- total	-	0.02
Zinc		remainder

* Corresponds to MIL-DTL-18001L alloy composition

- Notes
1. Anodes are cast to comply with CAA's standard casting tolerances
 2. All sharp edges removed for safe handling
 3. Anode insert material to meet relevant Australian/International specifications



Nett Weight Kg (nominal)	Gross Weight Kg (nominal)
2.75	3.00

CAA
 Cathodic Anodes Australasia
cathodicanodes.com.au

Product Zinc Anode		Scale 1 to 2
Part no. CDZ8-123-120H		Rev Sheet 1 1 of 1
Drawing No: CD3511		Rev Sheet 1 1 of 1
Drawn by: R Northey Date: 16 NOV 2012		⏏
All dimensions are in mm (nominal)		Mould No:

Rev	Details of Change(s)	Date	Initials
1	For Quotation	16NOV12	R.N.