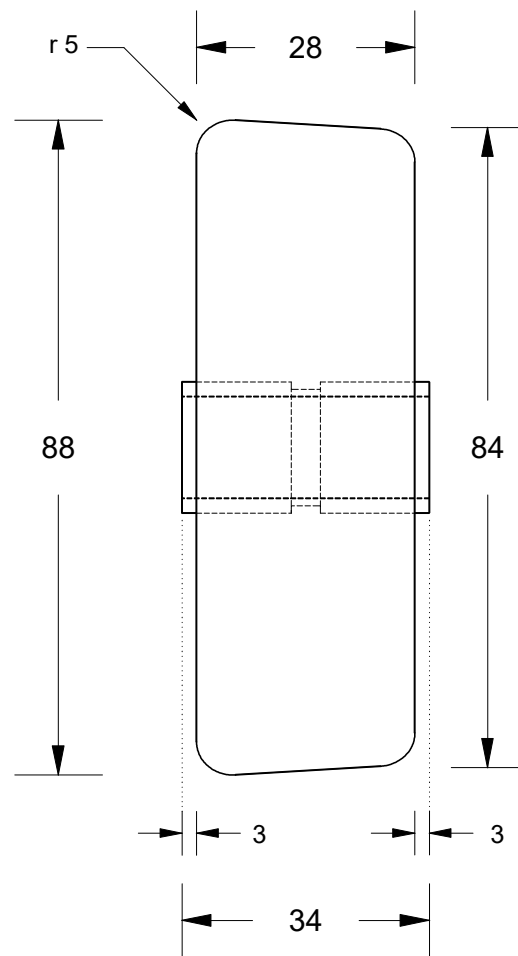
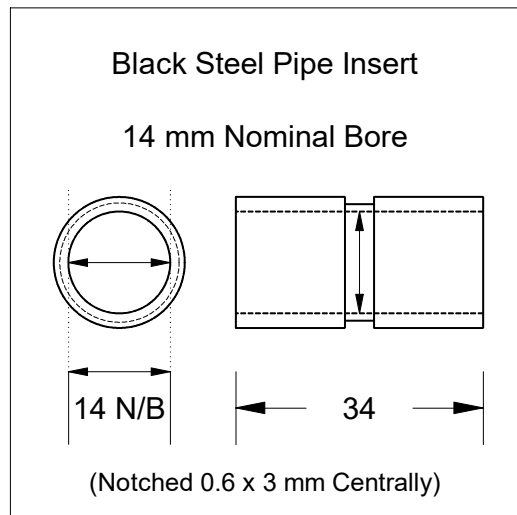


This drawing is the property of Cathodic Anodes Australasia. To be used with permission only.
 This drawing becomes an uncontrolled document once issued as hard or electronic copy.
 Customer to confirm current revision of drawing prior to ordering.



Chemical Composition Limits		Alloy:
Standard: AS2239* (Most current revision)		Z1
Zinc		
Element	min.	max.
Cadmium	0.025	0.07
Aluminium	0.10	0.50
Silicon	-	0.005
Copper	-	0.005
Iron	-	0.005
Lead	-	0.006
Other Impurities		
- each	-	0.005
- total	-	0.02
Zinc	remainder	

* Corresponds to MIL-DTL-18001L alloy composition

Notes

- Anodes are cast to comply with CAA's standard casting tolerances
- All sharp edges removed for safe handling
- Anode insert material to meet relevant Australian/International specifications



Rev	Details of Change(s)	Date	Drawn	Verified
1	For Quotation	15 November 2012	R.N.	R.G.
2	Black Steel Pipe Insert, Nominal Bore = 14 mm	8 February 2020	R.N.	L.S.

Nett Weight Kg (nominal)	Gross Weight Kg (nominal)
1.37	1.40



Cathodic Anodes Australasia

cathodicanodes.com.au

Product Zinc Anode		Scale 1 to 1	
Part no. CDZ7-350-28HT		Rev 2	Sheet 1 of 1
Drawing No: CD3509			
Drawn by: R Northey Date: 8 FEB 2020			
Mould No: Customer's Tooling: N/A			

All dimensions are in mm (nominal)