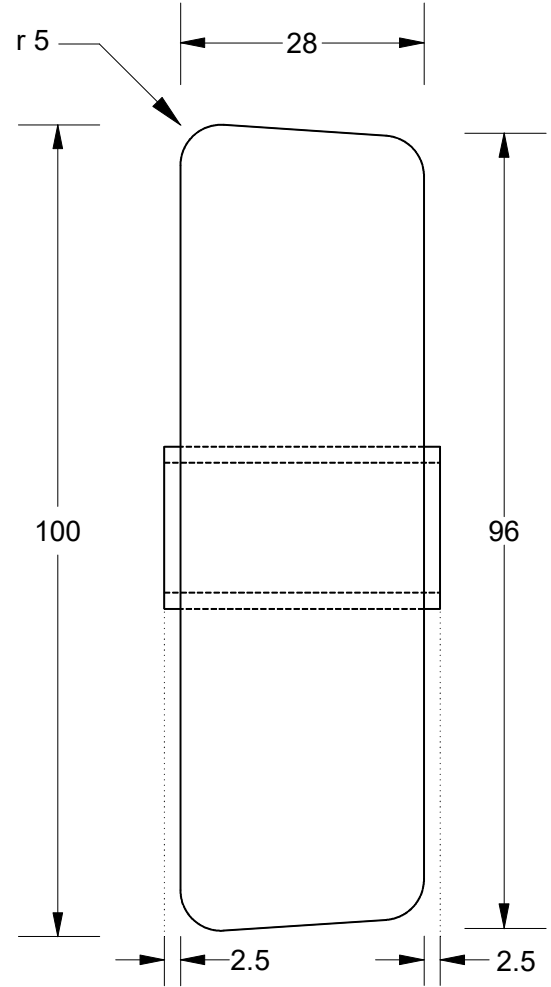


This drawing is the property of Cathodic Anodes Australasia. To be used with permission only.  
 This drawing becomes an uncontrolled document once issued as hard or electronic copy.  
 Customer to confirm current revision of drawing prior to ordering.



- Notes
1. Anodes are cast to comply with CAA's standard casting tolerances
  2. All sharp edges removed for safe handling
  3. Anode insert material to meet relevant Australian/International specifications

Chemical Composition Limits		Alloy:
Element	min.	max.
Standard: AS2239* (Most current revision)		<b>Z1</b>
Zinc		
Cadmium	0.025	0.07
Aluminium	0.10	0.50
Silicon	-	0.005
Copper	-	0.005
Iron	-	0.005
Lead	-	0.006
Other Impurities		
- each	-	0.005
- total	-	0.02
Zinc	remainder	



Nett Weight Kg (nominal)	Gross Weight Kg (nominal)
<b>1.77</b>	<b>1.80</b>

**CAA**  
 Cathodic Anodes Australasia  
[cathodicanodes.com.au](http://cathodicanodes.com.au)

Product <b>Zinc Anode</b>		Scale <b>1 to 1</b>
Part no. <b>Taylor Marine 1.80kg Anode</b>		Rev Sheet <b>1 1 of 1</b>
Drawing no. <b>CD3508</b>		Rev Sheet <b>1 1 of 1</b>
Drawn by: R Northey Date: 15 NOV 2012		
All dimensions are in mm (nominal) Mould No:		

\* Corresponds to MIL-DTL-18001L alloy composition