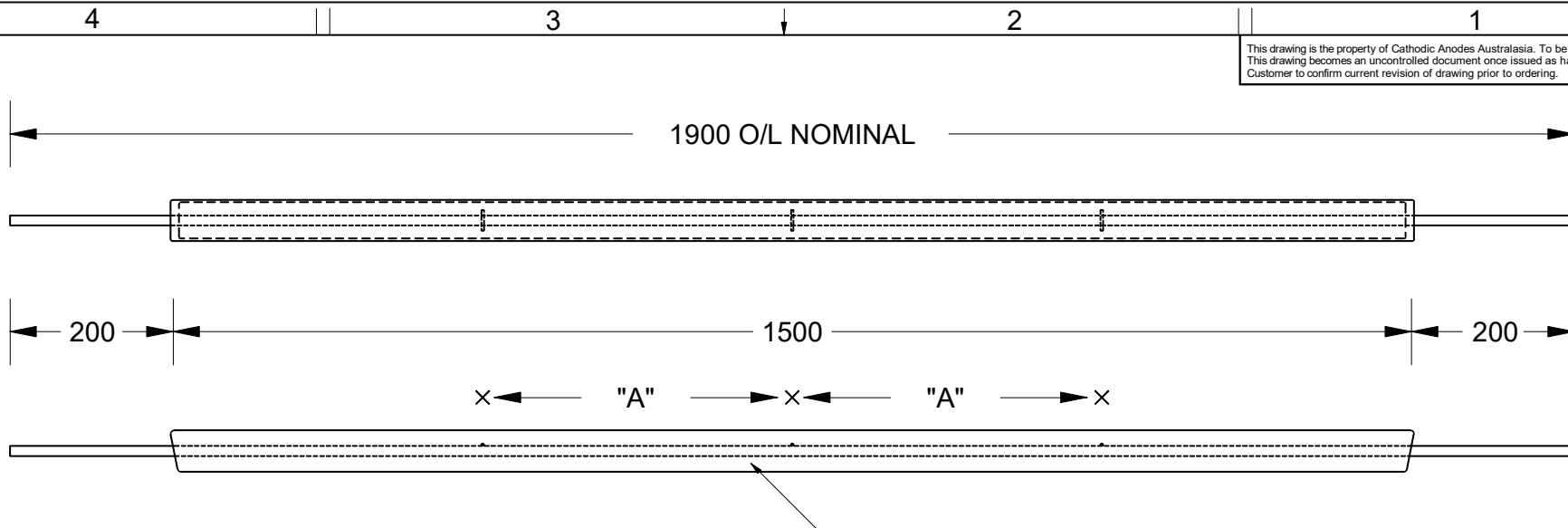
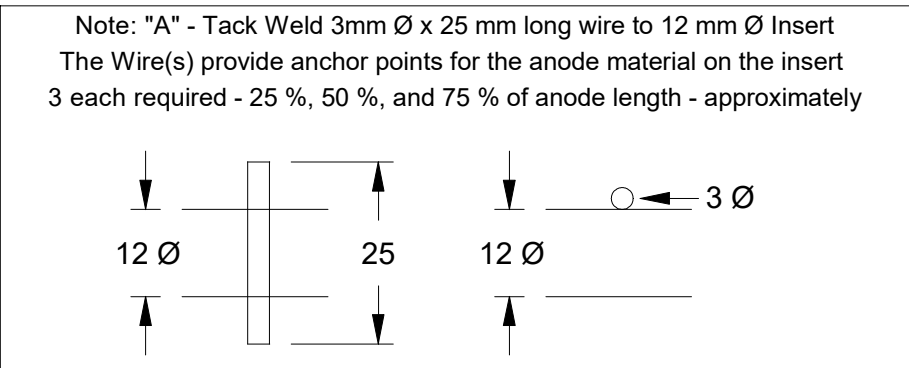
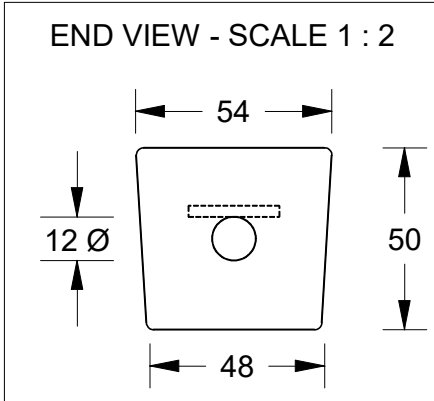


This drawing is the property of Cathodic Anodes Australasia. To be used with permission only.
 This drawing becomes an uncontrolled document once issued as hard or electronic copy.
 Customer to confirm current revision of drawing prior to ordering.



INSERT - 12mm Ø GALVANISED STEEL ROUND BAR



Density of Cast Magnesium Anode Alloys
 M1C (calculated mean) 1.73 g / cm³
 M3 (calculated mean) 1.94 g / cm³

HIGH POTENTIAL ALLOY

Chemical Composition Limits			Alloy:
Standard: ASTM B843 (Most current revision)			M1C
Magnesium, High Potential			
Element	min.	max.	
Aluminium	-	0.01	
Zinc	-	0.02	
Manganese	0.50	1.3*	
Silicon	-	0.05	
Copper	-	0.02	
Iron	-	0.03	
Nickel	-	0.001	
Calcium	-	0.04	
Other Impurities			
- each	-	0.05	
- total	-	0.30	
Magnesium	remainder		

- Notes
- Anodes are cast to comply with CAA's standard casting tolerances
 - All sharp edges removed for safe handling
 - Anode insert material to meet relevant Australian/International specifications

Rev	Details of Change(s)	Date	Initials	Verified	Initials
2	ASTM M1C Replaces AS2239 M1	07 NOV 12	R.N.	07 NOV 12	R.G.
3	Steel Core to 11mm - Weights Revised	07 NOV 12	R.N.	07 NOV 12	R.G.
4	2013 Catalogue Version (CAA Logo)	17 JAN 14	R.N.	17 JAN 14	R.G.
5	3 x (3 mm x 25) Wire Anchors added to insert	26 MAR 15	R.N.	26 MAR 15	J.L.

Nett Weight	Gross Weight
Kg (nominal)	Kg (nominal)
6.30	7.80

CAA
 Cathodic Anodes Australasia
 cathodicanodes.com.au

Product	
Magnesium Anode	
Part no.	Scale
CDM-7.0S (M1C)	1 : 8
Drawing No: CD3503	Rev Sheet
	5 1 of 1
Drawn by: R Northey Date: 26 MAR 2015	
All dimensions are in mm (nominal)	