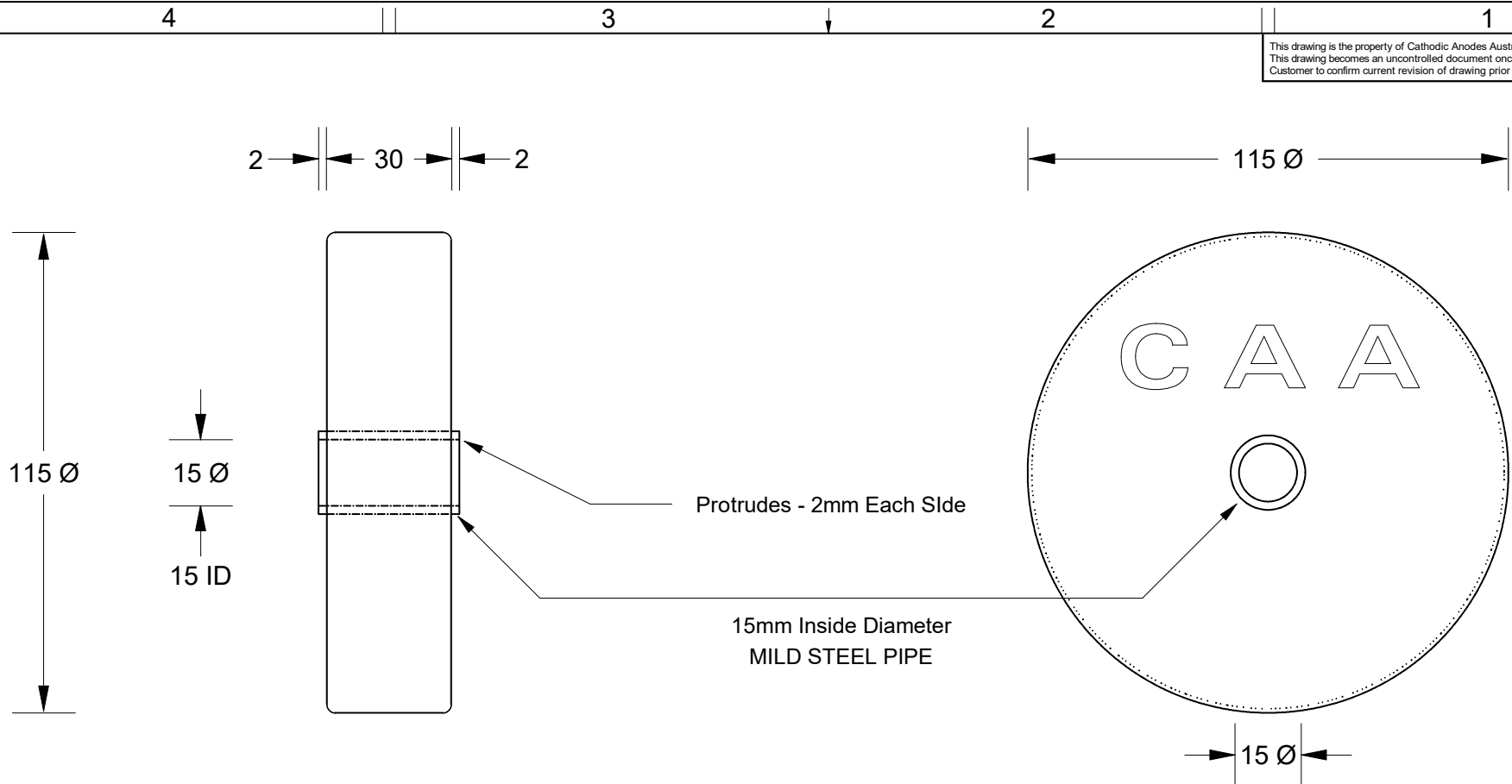


This drawing is the property of Cathodic Anodes Australasia. To be used with permission only.  
 This drawing becomes an uncontrolled document once issued as hard or electronic copy.  
 Customer to confirm current revision of drawing prior to ordering.



PARALLEL OUTSIDE DIAMETER - NOT TAPERED

Chemical Composition Limits			Alloy: <b>M3</b>
Standard: AS2239 (Most current revision)			
Magnesium, Low Potential			
Element	min.	max.	
Aluminium	5.3	6.7	
Zinc	2.5	3.5	
Manganese	0.25	0.40	
Silicon	-	0.05	
Copper	-	0.05	
Iron	-	0.03	
Nickel	-	0.003	
Calcium	-	0.04	
Other Impurities			
- each	-	-	
- total	-	0.30	
Magnesium	remainder		

Notes

- Anodes are cast to comply with CAA's standard casting tolerances
- All sharp edges removed for safe handling
- Anode insert material to meet relevant Australian/International specifications

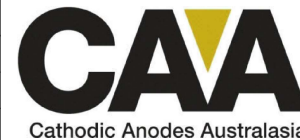
Nett Weight  
Kg (nominal)

**0.55**

Gross Weight  
Kg (nominal)

**0.60**

Rev	Details of Change(s)	Date	Initials	Verified	Initials
1	Cathodic Diecasting Original	28 SEP 12	R.N.	28 SEP 12	R.G.
2	2013 Catalogue Version (CAA Logo)	17 JAN 14	R.N.	17 JAN 14	R.G.
3	Indentation Lettering Changed CDQ > CAA	28 JAN 20	R.N.	28 JAN 20	L.S.



Cathodic Anodes Australasia

[cathodicanodes.com.au](http://cathodicanodes.com.au)

Product

**Magnesium Anode**

Part no.  
**CDM6C-115H (M3)**

Drawing No: **CD3480**

Drawn by: R Northey Date: 28 JAN 2020

All dimensions are in mm (nominal)

Scale

**1 : 1.5**

Rev Sheet  
**3 1 of 1**

