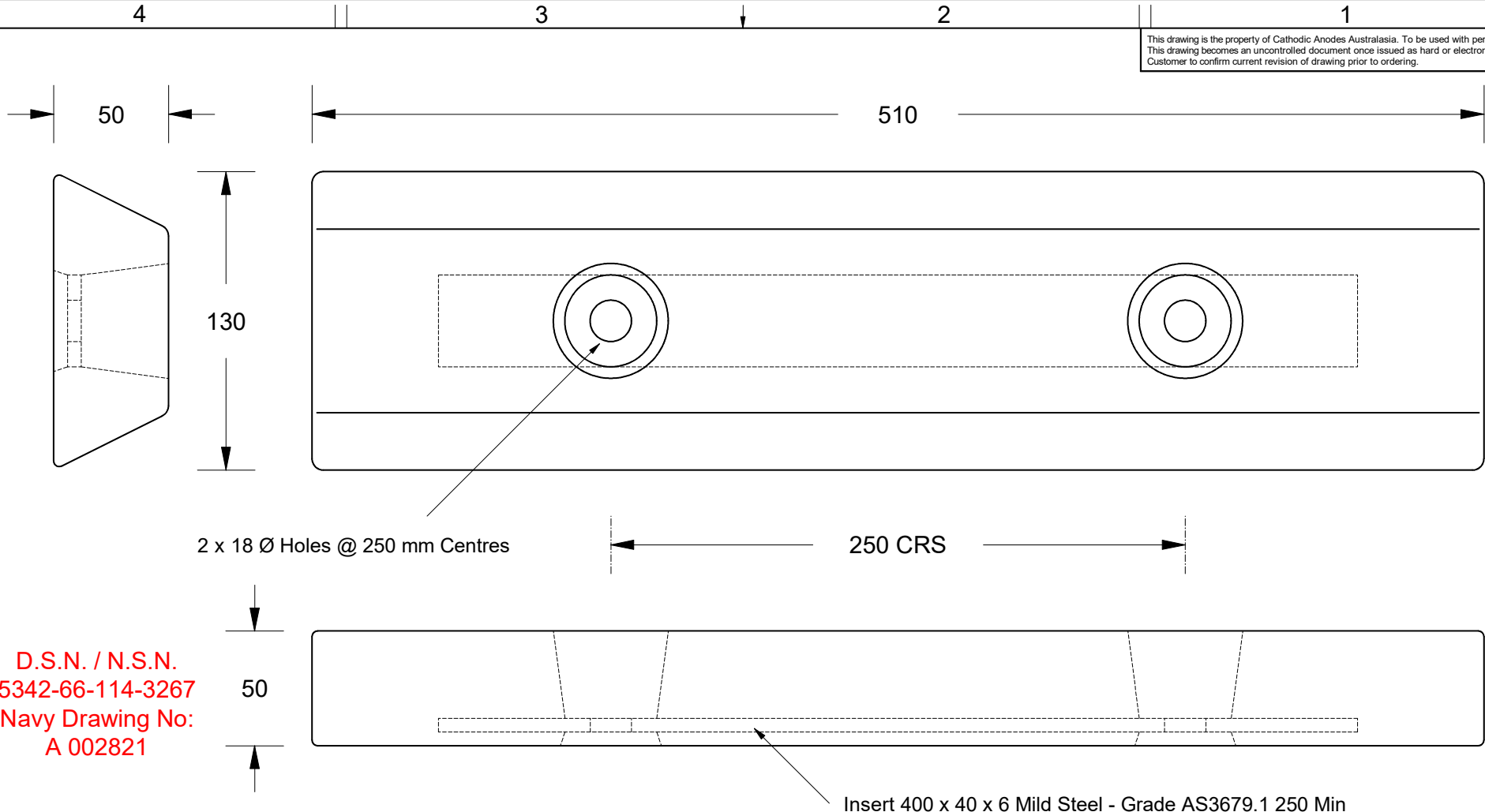


This drawing is the property of Cathodic Anodes Australasia. To be used with permission only.
 This drawing becomes an uncontrolled document once issued as hard or electronic copy.
 Customer to confirm current revision of drawing prior to ordering.



D.S.N. / N.S.N.
 5342-66-114-3267
 Navy Drawing No:
 A 002821

2 x 18 Ø Holes @ 250 mm Centres

250 CRS

Insert 400 x 40 x 6 Mild Steel - Grade AS3679.1 250 Min

Chemical Composition Limits			Alloy:
Standard: AS2239 (Most current revision)			A1
Element	min.	max.	
Zinc	2.1	2.7	
Indium	0.017	0.025	
Cadmium	0.008	0.012	
Silicon	-	0.20	
Iron	-	0.12	
Copper	-	0.006	
Other Impurities			
- each	-	0.02	
- total	-	0.05	
Aluminium	remainder		

- Notes
1. Anodes are cast to comply with CAA's standard casting tolerances
 2. All sharp edges removed for safe handling
 3. Anode insert material to meet relevant Australian/International specifications



Nett Weight		Gross Weight	
Kg (nominal)		Kg (nominal)	
6.5		7.2	
Rev	Details of Change(s)	Date	Drawn
1	For Manufacture	26 Oct 2009	B.L.
2	Identification Added	07 Jun 2012	R.N.
			Verified
			R.G.

CAA
 Cathodic Anodes Australasia
 cathodicanodes.com.au

Product			
Aluminium Anode			
Part no.	Navy Type 4B Metric		Scale
			1 : 2.5
Drawing No:	CD3443	Rev	Sheet
		2	1 of 1
Drawn by: R Northey	Date: 07 JUN 2012		
Mould No: X	Tooling:		

All dimensions are in mm (nominal)