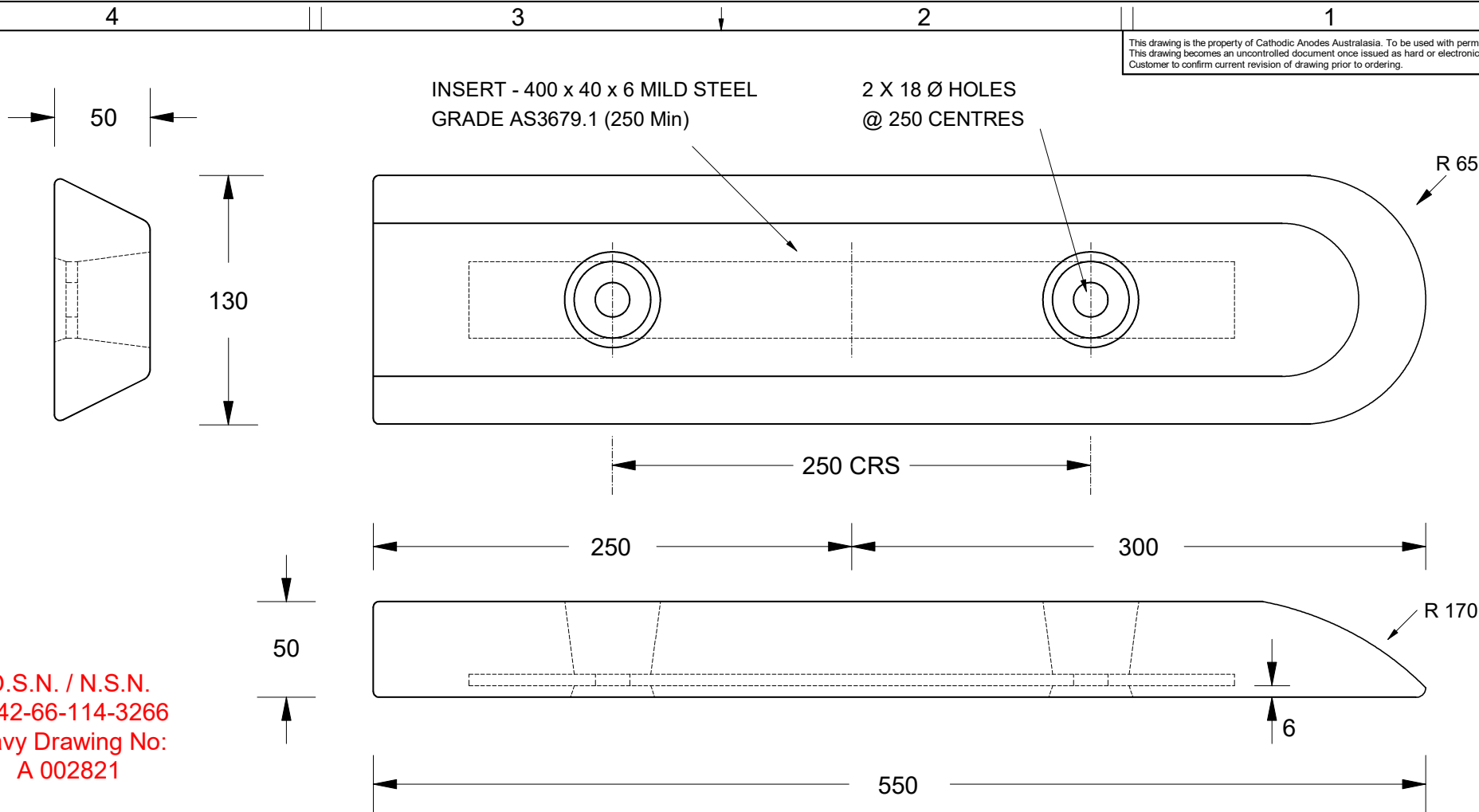


This drawing is the property of Cathodic Anodes Australasia. To be used with permission only.
 This drawing becomes an uncontrolled document once issued as hard or electronic copy.
 Customer to confirm current revision of drawing prior to ordering.



D.S.N. / N.S.N.
 5342-66-114-3266
 Navy Drawing No:
 A 002821

Chemical Composition Limits			Alloy:
Standard: AS2239 (Most current revision)			A1
Element	min.	max.	
Zinc	2.1	2.7	
Indium	0.017	0.025	
Cadmium	0.008	0.012	
Silicon	-	0.20	
Iron	-	0.12	
Copper	-	0.006	
Other Impurities			
- each	-	0.02	
- total	-	0.05	
Aluminium	remainder		

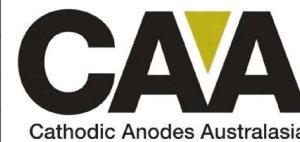
Notes

1. Anodes are cast to comply with CAA's standard casting tolerances
2. All sharp edges removed for safe handling
3. Anode insert material to meet relevant Australian/International specifications



Nett Weight Kg (nominal)	Gross Weight Kg (nominal)
7.00	7.65

Rev	Details of Change(s)	Date	Drawn	Verified
1	For Manufacture	18 July 2012	R.N.	J.L.



Cathodic Anodes Australasia

cathodicanodes.com.au

All dimensions are in mm (nominal)

Product		Aluminium Anode	
Part no.	Navy Type 4A Metric	Scale	1 : 3
Drawing No:	CD3440	Rev	Sheet
		1	1 of 1
Drawn by: R Northey	Date: 18 JUL 2012		
Mould No: 17	Strap Sample: 37		