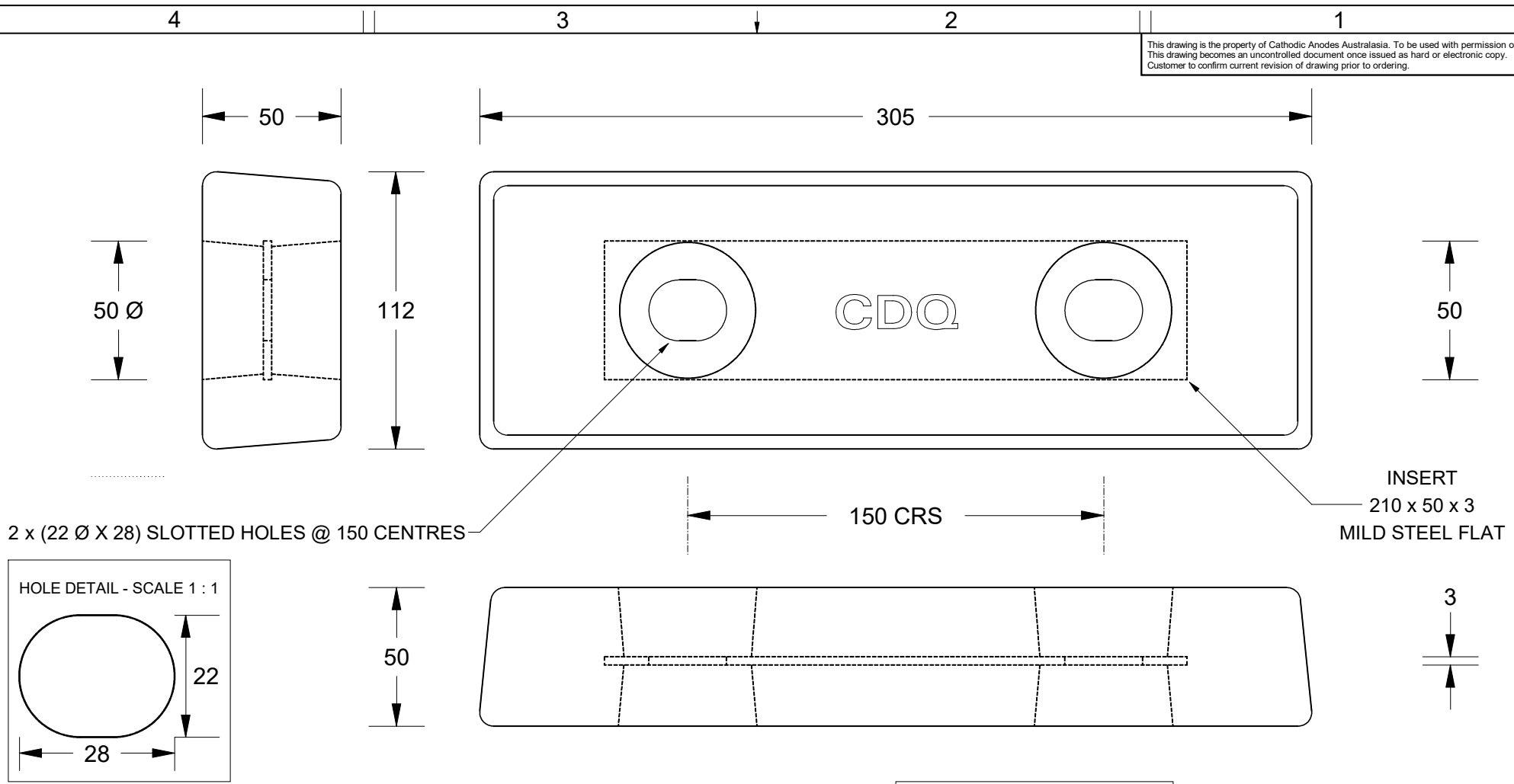
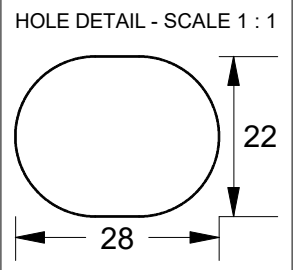


This drawing is the property of Cathodic Anodes Australasia. To be used with permission only. This drawing becomes an uncontrolled document once issued as hard or electronic copy. Customer to confirm current revision of drawing prior to ordering.



2 x (22 Ø X 28) SLOTTED HOLES @ 150 CENTRES

INSERT
210 x 50 x 3
MILD STEEL FLAT



CDQ
CAST INDENTATION LETTERING

All dimensions are in mm (nominal)

Chemical Composition Limits			Alloy: A1
Standard: AS2239 (Most current revision)			
Element	min.	max.	
Zinc	2.1	2.7	
Indium	0.017	0.025	
Cadmium	0.008	0.012	
Silicon	-	0.20	
Iron	-	0.12	
Copper	-	0.006	
Other Impurities			
- each	-	0.02	
- total	-	0.05	
Aluminium	remainder		

- Notes
1. Anodes are cast to comply with CAA's standard casting tolerances
 2. All sharp edges removed for safe handling
 3. Anode insert material to meet relevant Australian/International specifications



Rev	Details of Change(s)	Date	Nett Weight		Gross Weight	
			Kg (nominal)		Kg (nominal)	
			3.10		3.40	
1	Cathodic Diecasting Original	08 August 2011		<i>B.L.</i>	<i>R.G.</i>	
2	2013 Catalogue Version (CAA Logo)	10 January 2014		<i>R.N.</i>	<i>R.G.</i>	

CAA
Cathodic Anodes Australasia
cathodicanodes.com.au

Product		Aluminium Anode	
Part no.	CDA-3H Type 2 (A1)	Scale	1 : 2
Drawing No:	CD3412	Rev	2
Drawn by: R Northey	Date: 10 JAN 2014	Sheet	1 of 1
Mould No: 93	Strap Sample: 40		