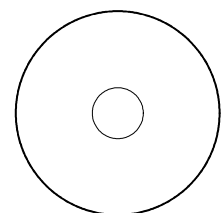


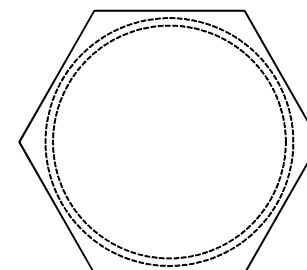
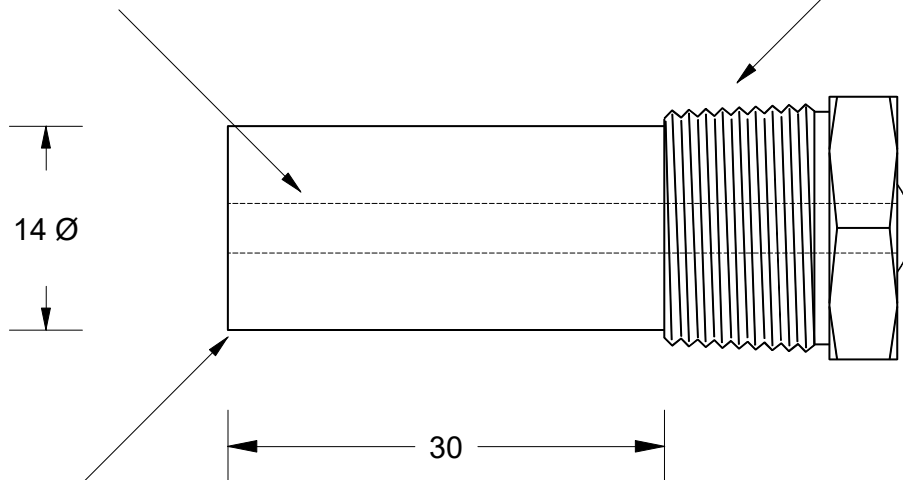
This drawing is the property of Cathodic Anodes Australasia. To be used with permission only.
 This drawing becomes an uncontrolled document once issued as hard or electronic copy.
 Customer to confirm current revision of drawing prior to ordering.

3.4 Ø Mild Steel (Wire) Core - Welded at Cap End

3/8 BSPT (Mild Steel) Cap



14 Ø



19 Hex

14 mm Ø Low Potential (AS2239-M2) Magnesium Rod

30

| Chemical Composition Limits | | Alloy: |
|--|-----------|-----------|
| Element | min. | max. |
| Standard: AS2239 (Most current revision) | | M2 |
| Magnesium, Low Potential | | |
| Aluminium | 2.5 | 3.5 |
| Zinc | 0.7 | 1.3 |
| Manganese | 0.20 | 1.5 |
| Silicon | - | 0.05 |
| Copper | - | 0.006 |
| Iron | - | 0.003 |
| Nickel | - | 0.001 |
| Calcium | - | 0.04 |
| Other Impurities | - | - |
| - each | - | - |
| - total | - | 0.30 |
| Magnesium | remainder | |

Notes

- Anodes are cast to comply with CAA's standard casting tolerances
- All sharp edges removed for safe handling
- Anode insert material to meet relevant Australian/International specifications

| Rev | Details of Change(s) | Drawn | Initials | Verified | Initials |
|-----|----------------------|-----------|----------|-----------|----------|
| 1 | For Quotation | 03 MAR 16 | R.N. | 03 MAR 16 | J.L. |
| | | | | | |
| | | | | | |
| | | | | | |

| Nett Weight Kg (nominal) | Gross Weight Kg (nominal) |
|-----------------------------|------------------------------|
| 0.130 | 0.160 |



Cathodic Anodes Australasia

cathodicanodes.com.au

| | | | |
|------------------------------------|-------------------|------------------------|--|
| Product | | Magnesium Anode | |
| Part no. | Scale | | |
| CDMR-M2-14-0030-A | 2 : 1 | | |
| Drawing No: | Rev | Sheet | |
| CD3394 | 1 | 1 of 1 | |
| Drawn by: R Northey | Date: 03 MAR 2016 | | |
| All dimensions are in mm (nominal) | | | |