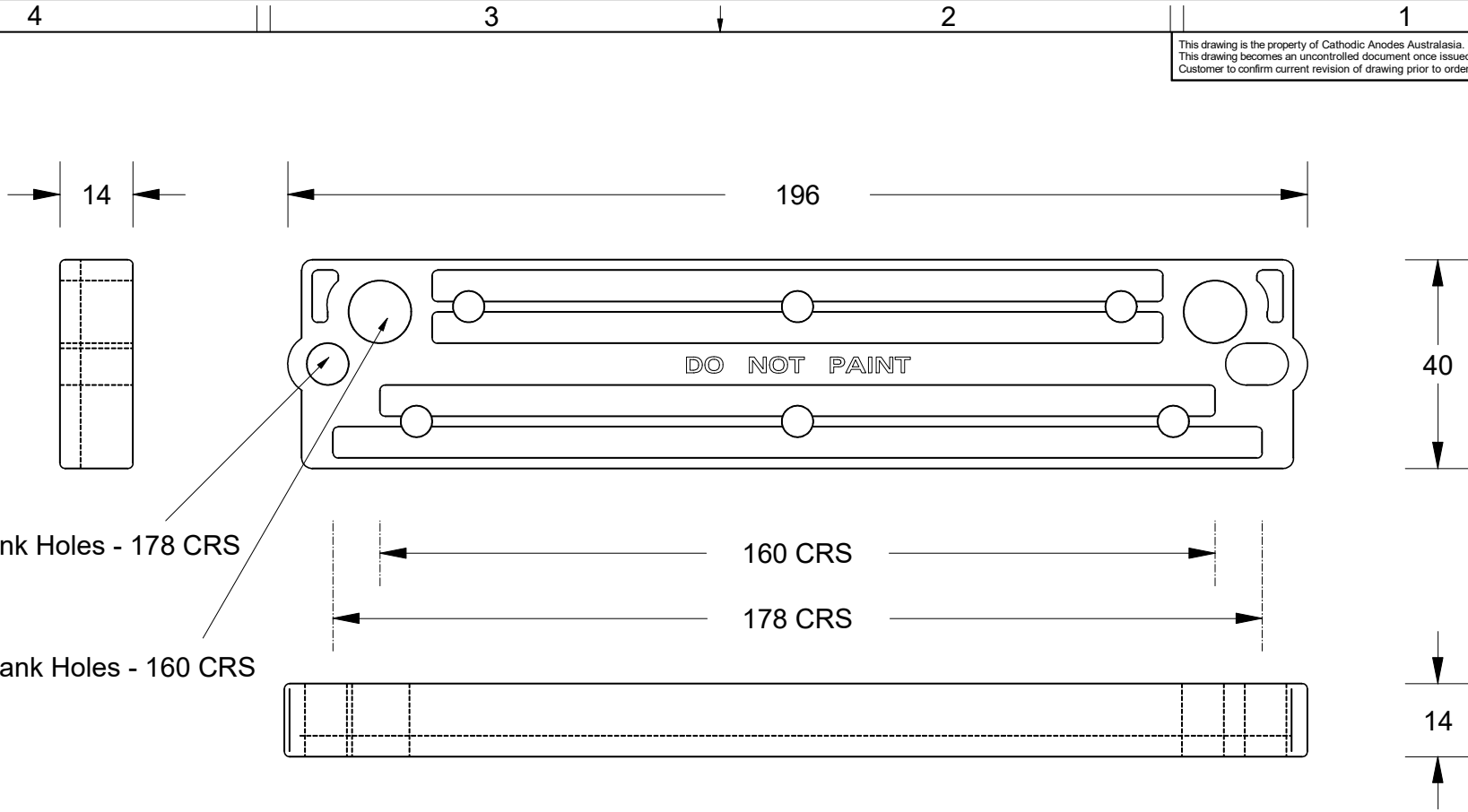


This drawing is the property of Cathodic Anodes Australasia. To be used with permission only.
 This drawing becomes an uncontrolled document once issued as hard or electronic copy.
 Customer to confirm current revision of drawing prior to ordering.



2 x 7 mm Blank Holes - 178 CRS

2 x 11 mm Blank Holes - 160 CRS

Mercury / Mercruiser Transom Bar Anode - Replaces Genuine Part No: 8239121

All dimensions are in mm (nominal)

Chemical Composition Limits			Alloy: Z1
Standard: AS2239* (Most current revision)			
Element	min.	max.	
Cadmium	0.025	0.07	
Aluminium	0.10	0.50	
Silicon	-	0.005	
Copper	-	0.005	
Iron	-	0.005	
Lead	-	0.006	
Other Impurities			
- each	-	0.005	
- total	-	0.02	
Zinc	remainder		

* Corresponds to MIL-DTL-18001L alloy composition

- Notes
1. Anodes are cast to comply with CAA's standard casting tolerances
 2. All sharp edges removed for safe handling
 3. Anode insert material to meet relevant Australian/International specifications

Rev	Details of Change(s)	Date	Nett Weight		Gross Weight	
			Kg (nominal)		Kg (nominal)	
			N/A		0.500	
1	Initial Drawing - 2013 Catalogue Version	24 February 2016		<i>R.N.</i>		<i>R.G.</i>

CAA
Cathodic Anodes Australasia
cathodicanodes.com.au

Product Transom Bar Zinc Anode		Scale 1 : 1.25	
Part no. CDZ9 - 181		Rev 1	Sheet 1 of 1
Drawing No: CD3388		Drawn by: R Northey Date: 24 FEB 2016	