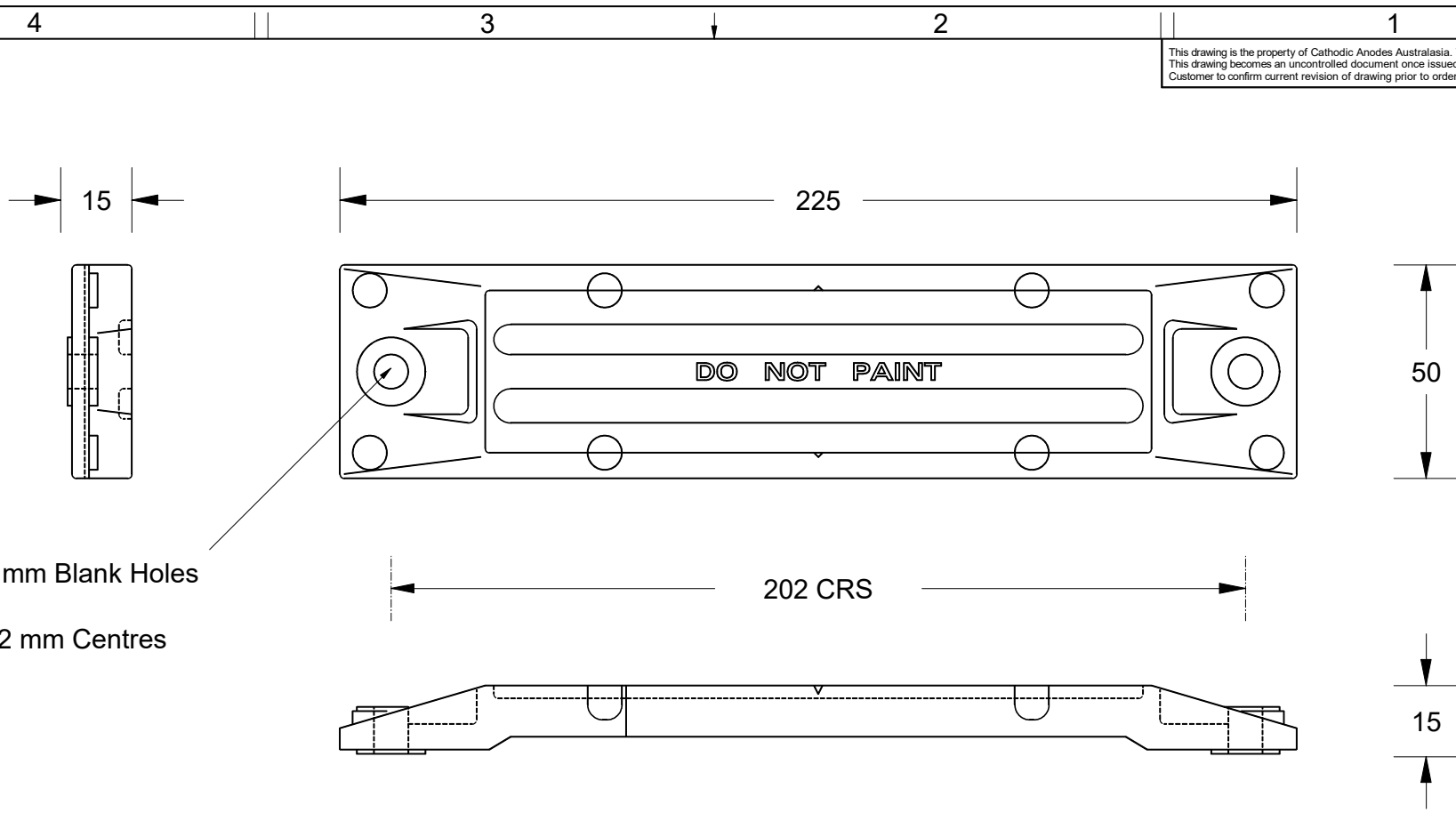


This drawing is the property of Cathodic Anodes Australasia. To be used with permission only.
 This drawing becomes an uncontrolled document once issued as hard or electronic copy.
 Customer to confirm current revision of drawing prior to ordering.



Honda Stern Bracket Anode - Replaces Genuine Part No: 06411-ZWI-000

All dimensions are in mm (nominal)

Chemical Composition Limits			Alloy:
Standard: AS2239* (Most current revision)			Z1
Zinc			
Element	min.	max.	
Cadmium	0.025	0.07	
Aluminium	0.10	0.50	
Silicon	-	0.005	
Copper	-	0.005	
Iron	-	0.005	
Lead	-	0.006	
Other Impurities			
- each	-	0.005	
- total	-	0.02	
Zinc	remainder		

* Corresponds to MIL-DTL-18001L alloy composition

Notes

- Anodes are cast to comply with CAA's standard casting tolerances
- All sharp edges removed for safe handling
- Anode insert material to meet relevant Australian/International specifications

Rev	Details of Change(s)	Date	Drawn	Verified
1	Initial Drawing - 2013 Catalogue Version	23 February 2016	R.N.	R.G.

Nett Weight Kg (nominal)	Gross Weight Kg (nominal)
N/A	0.802



Cathodic Anodes Australasia

cathodicanodes.com.au

Product			
Stern Bracket Zinc Anode			
Part no.	Scale	Rev	Sheet
CDZ9 - 184	1 : 1.5	1	1 of 1
Drawing No:	Date		
CD3385	23 FEB 2016		
Drawn by: R Northey	Date: 23 FEB 2016		