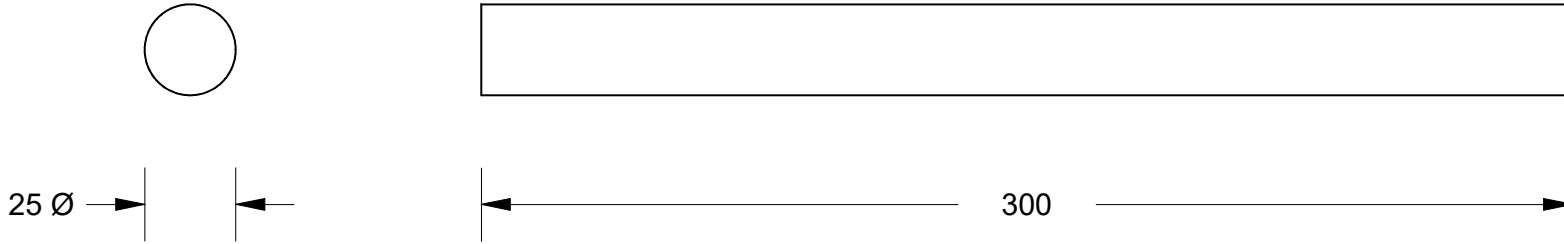


This drawing is the property of Cathodic Anodes Australasia. To be used with permission only.  
 This drawing becomes an uncontrolled document once issued as hard or electronic copy.  
 Customer to confirm current revision of drawing prior to ordering.



| Chemical Composition Limits               |           |       | Alloy:<br><b>Z1</b> |
|---|-----------|-------|---------------------|
| Standard: AS2239* (Most current revision) |           |       |                     |
| Element                                   | min.      | max.  |                     |
| Cadmium                                   | 0.025     | 0.07  |                     |
| Aluminium                                 | 0.10      | 0.50  |                     |
| Silicon                                   | -         | 0.005 |                     |
| Copper                                    | -         | 0.005 |                     |
| Iron                                      | -         | 0.005 |                     |
| Lead                                      | -         | 0.006 |                     |
| Other Impurities                          |           |       |                     |
| - each                                    | -         | 0.005 |                     |
| - total                                   | -         | 0.02  |                     |
| Zinc                                      | remainder |       |                     |

\* Corresponds to MIL-DTL-18001L alloy composition

Notes

1. Anodes are cast to comply with CAA's standard casting tolerances
2. All sharp edges removed for safe handling
3. Anode insert material to meet relevant Australian/International specifications



| Rev | Details of Change(s)              | Date             | Drawn | Verified |
|-----|-----------------------------------|------------------|-------|----------|
| 1   | 2013 Catalogue Version (CAA Logo) | 15 December 2015 | R.N.  | R.G.     |
|     |                                   |                  |       |          |
|     |                                   |                  |       |          |
|     |                                   |                  |       |          |

|                             |                              |
|-----------------------------|------------------------------|
| Nett Weight<br>Kg (nominal) | Gross Weight<br>Kg (nominal) |
| <b>1.050</b>                | <b>N/A</b>                   |



Cathodic Anodes Australasia

[cathodicanodes.com.au](http://cathodicanodes.com.au)

All dimensions are in mm (nominal)

|  |                              |
|--|------------------------------|
| Product<br><b>Zinc Anode - Extruded Zinc Rod</b> |                              |
| Part no.<br><b>CDZ5-1.00-12E</b>                 | Scale<br><b>1 : 2</b>        |
| Drawing No: <b>CD3355</b>                        | Rev Sheet<br><b>1 1 of 1</b> |
| Drawn by: R Northey Date: 15 DEC 2015            |                              |
| Mould No: N/A Tooling: N/A                       |                              |