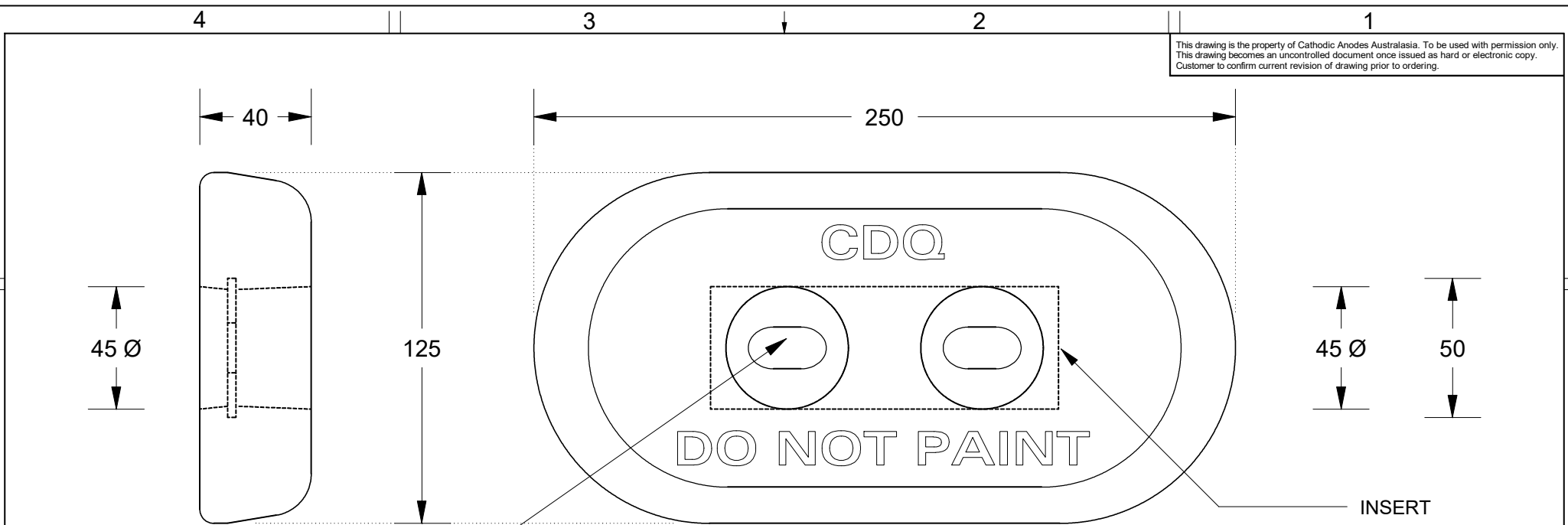
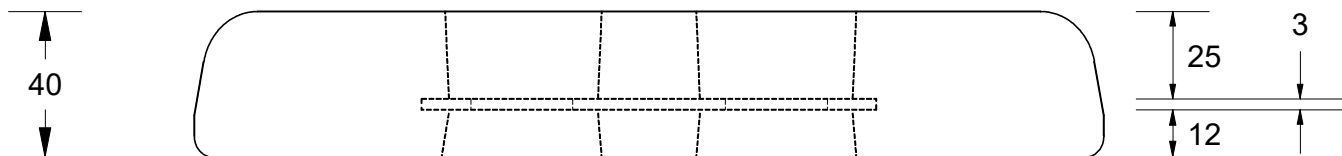
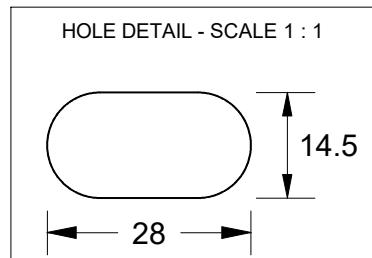


This drawing is the property of Cathodic Anodes Australasia. To be used with permission only. This drawing becomes an uncontrolled document once issued as hard or electronic copy. Customer to confirm current revision of drawing prior to ordering.



2 x (14.5 Ø X 28) SLOTTED HOLES @ 70 CENTRES

INSERT
125 x 40 x 3 MILD STEEL FLAT



CDQ
CAST INDENTATION LETTERING

Casting Note: Use Spigotts from CDZ2-84-1.37H

All dimensions are in mm (nominal)

Chemical Composition Limits		Alloy:
Standard: AS2239* (Most current revision)		Z1
Zinc		
Element	min.	max.
Cadmium	0.025	0.07
Aluminium	0.10	0.50
Silicon	-	0.005
Copper	-	0.005
Iron	-	0.005
Lead	-	0.006
Other Impurities		
- each	-	0.005
- total	-	0.02
Zinc	remainder	

* Corresponds to MIL-DTL-18001L alloy composition

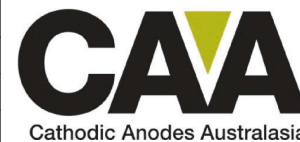
Notes

1. Anodes are cast to comply with CAA's standard casting tolerances
2. All sharp edges removed for safe handling
3. Anode insert material to meet relevant Australian/International specifications



Rev	Details of Change(s)	Date	Drawn	Verified
1	For Manufacture	02 DEC 15	R.N.	D.B.

Nett Weight Kg (nominal)	Gross Weight Kg (nominal)
6.30	6.50



cathodicanodes.com.au

Product Zinc Anode		Scale 1 : 2	
Part no. CDZ8-10H Type 4		Rev 1	Sheet 1 of 1
Drawing No: CD3320			
Drawn by: R Northey Date: 02 DEC 2015		Mould No: 87 Strap Sample: 24	