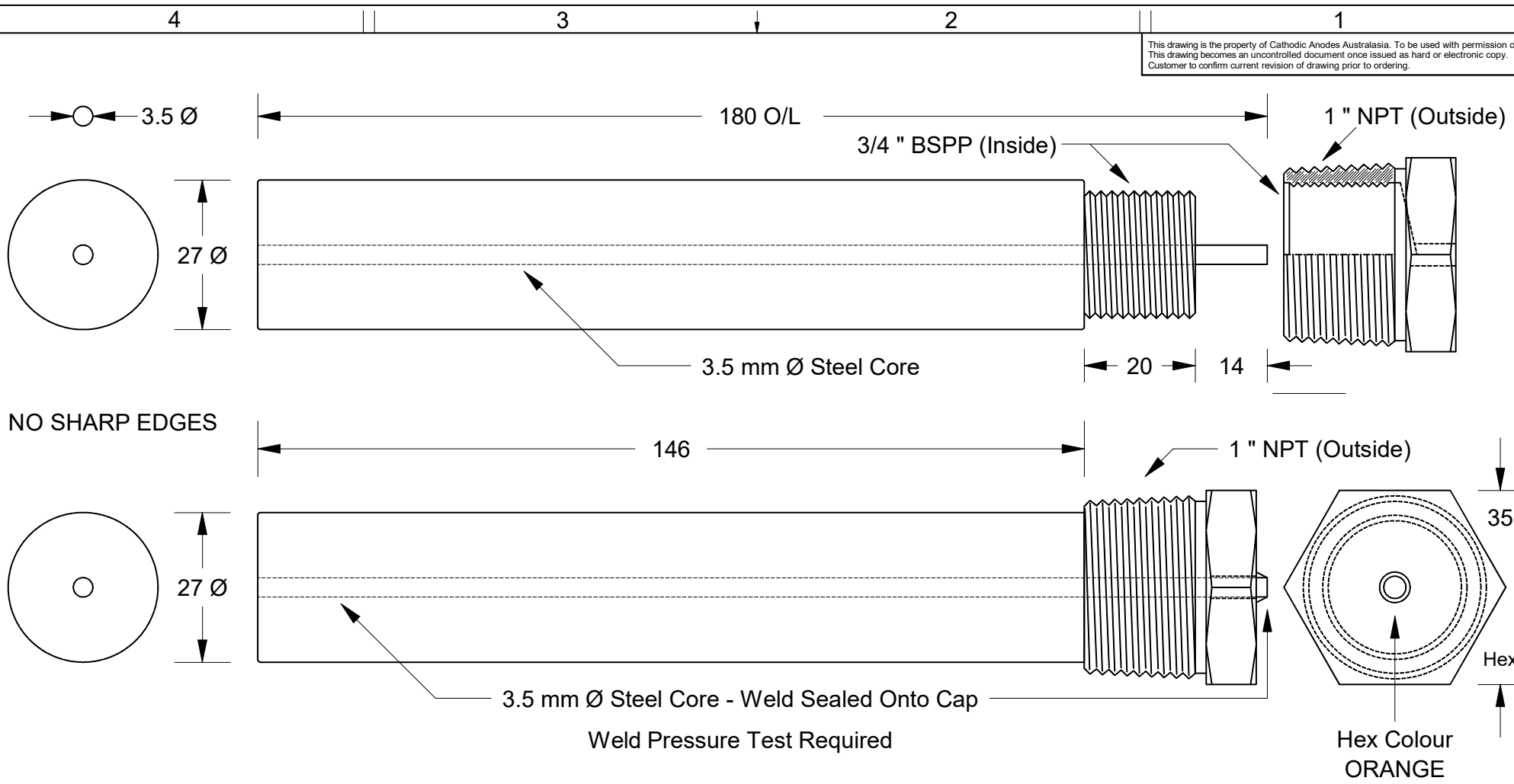


This drawing is the property of Cathodic Anodes Australasia. To be used with permission only. This drawing becomes an uncontrolled document once issued as hard or electronic copy. Customer to confirm current revision of drawing prior to ordering.



NO SHARP EDGES

3.5 mm Ø Steel Core - Weld Sealed Onto Cap

Weld Pressure Test Required

Hex Colour ORANGE

Steel Cap Detail - See Drawing No: CD3306 (Steel Cap 13)

Chemical Composition Limits		Alloy:	
Standard: AS2239 (Most current revision)		M2	
Magnesium. Low Potential			
Element	min.	max.	
Aluminium	2.5	3.5	
Zinc	0.7	1.3	
Manganese	0.20	1.5	
Silicon	-	0.05	
Copper	-	0.006	
Iron	-	0.003	
Nickel	-	0.001	
Calcium	-	0.04	
Other Impurities			
- each	-	-	
- total	-	0.30	
Magnesium	remainder		

- Notes
- Anodes are cast to comply with CAA's standard casting tolerances
 - All sharp edges removed for safe handling
 - Anode insert material to meet relevant Australian/International specifications

Rev		Details of Change(s)		Date	Initials	Date	Initials
1		For Quotation		15 AUG 15	R.N.	15 AUG 15	R.N.

Nett Weight		Gross Weight	
Kg (nominal)		Kg (nominal)	
0.200		0.290	

CAA
Cathodic Anodes Australasia
cathodicanodes.com.au

Product		Magnesium Anode	
Part no.	Scale	1 : 1	
CDMR-M2-27-0180A	Rev	Sheet	
Drawing No: CD3307	1	1 of 1	
Drawn by: R Northey Date: 15 AUG 2015			
All dimensions are in mm (nominal)			