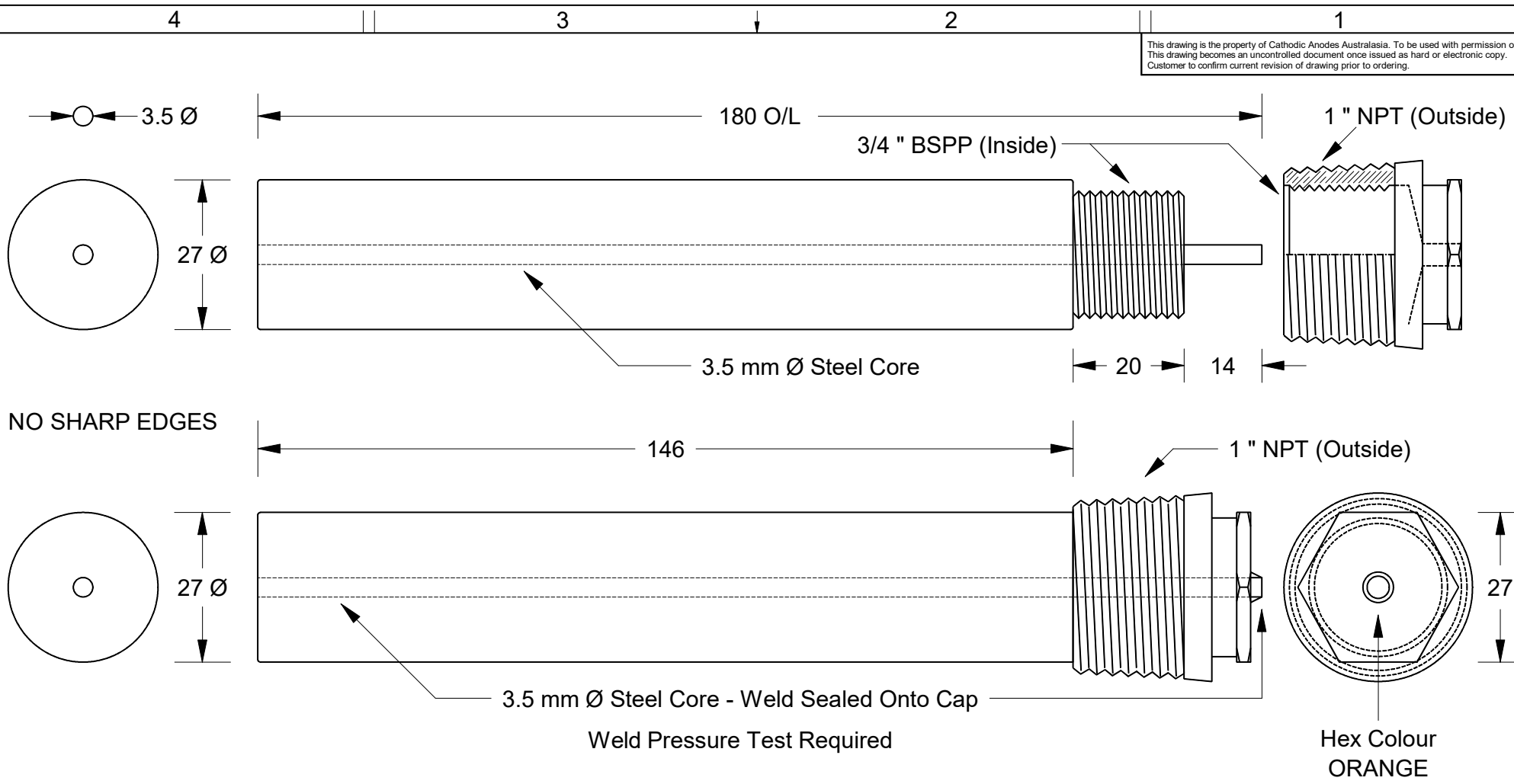


This drawing is the property of Cathodic Anodes Australasia. To be used with permission only. This drawing becomes an uncontrolled document once issued as hard or electronic copy. Customer to confirm current revision of drawing prior to ordering.



Steel Cap Detail - See Drawing No: CD3304 (Steel Cap 12)

Chemical Composition Limits		Alloy:
Standard: AS2239 (Most current revision)		M2
Magnesium. Low Potential		
Element	min.	max.
Aluminium	2.5	3.5
Zinc	0.7	1.3
Manganese	0.20	1.5
Silicon	-	0.05
Copper	-	0.006
Iron	-	0.003
Nickel	-	0.001
Calcium	-	0.04
Other Impurities	-	-
- each	-	-
- total	-	0.30
Magnesium	remainder	-

- Notes
- Anodes are cast to comply with CAA's standard casting tolerances
 - All sharp edges removed for safe handling
 - Anode insert material to meet relevant Australian/International specifications

Rev	Details of Change(s)	Date	Initials	Date	Initials
1	For Quotation	15 AUG 15	R.N.	15 AUG 15	R.N.

Nett Weight	Gross Weight
Kg (nominal)	Kg (nominal)
0.200	0.290

CAA
Cathodic Anodes Australasia
cathodicanodes.com.au

Product	
Magnesium Anode	
Part no.	Scale
CDMR-M2-27-0180A	1 : 1
Drawing No: CD3305	Rev Sheet
	1 1 of 1
Drawn by: R Northey Date: 15 AUG 2015	
All dimensions are in mm (nominal)	