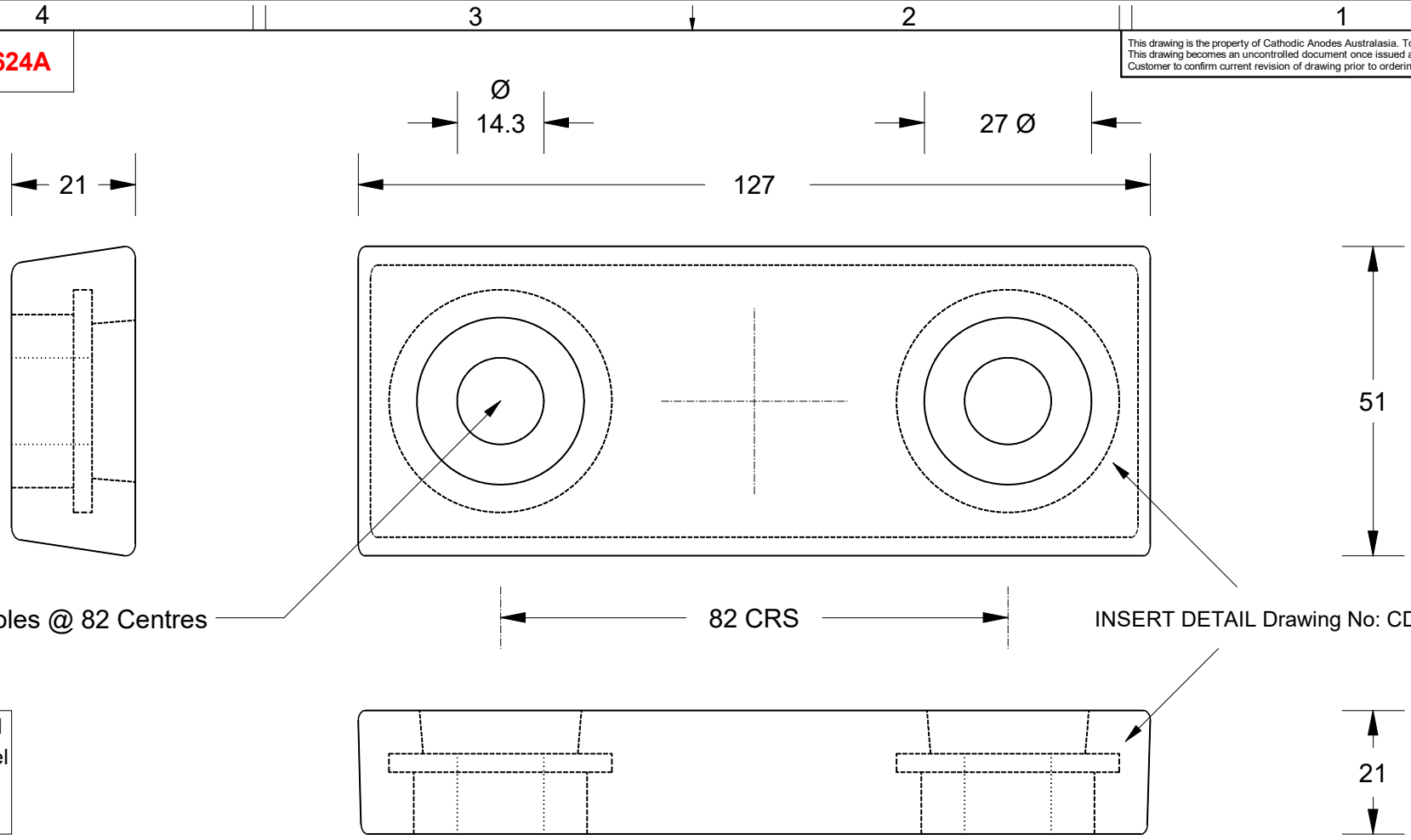


Fernstrum 2624A

This drawing is the property of Cathodic Anodes Australasia. To be used with permission only. This drawing becomes an uncontrolled document once issued as hard or electronic copy. Customer to confirm current revision of drawing prior to ordering.



2 x 14.3 Holes @ 82 Centres

82 CRS

INSERT DETAIL Drawing No: CD2162

Insert Material
Machined Steel
Drawing No:
CD2162

PART NO. 2624A COLOUR - ORANGE 1.5# EA, 4# PER SET

BN8 - BN14, BNBU - BN14U

CN6 - CN10, CN6U - CN10U, D8 & D8U

MILLIMETERS SHOWN ARE ROUNDED

All dimensions are in mm (nominal)

Chemical Composition Limits		Alloy:
Standard: AS2239* (Most current revision)		Z1
Element	min.	max.
Cadmium	0.025	0.07
Aluminium	0.10	0.50
Silicon	-	0.005
Copper	-	0.005
Iron	-	0.005
Lead	-	0.006
Other Impurities		
- each	-	0.005
- total	-	0.02
Zinc	remainder	

* Corresponds to MIL-DTL-18001L alloy composition

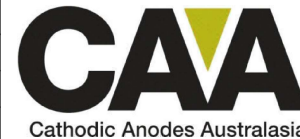
Notes

1. Anodes are cast to comply with CAA's standard casting tolerances
2. All sharp edges removed for safe handling
3. Anode insert material to meet relevant Australian/International specifications



Rev	Details of Change(s)	Date	Drawn	Verified
1	Cathodic Diecasting Original	14 February 2012	R.N.	R.G.
2	2013 Catalogue Version (CAA Logo)	29 April 2014	R.N.	R.G.

Nett Weight Kg (nominal)	Gross Weight Kg (nominal)
0.80	0.90



cathodicanodes.com.au

Product Zinc Anode Fernstrum 2624A	
Part no. CDZ2-52-813H Type 2	Scale 1 : 1
Drawing No: CD3259	Rev Sheet 2 1 of 1
Drawn by: R Northey Date: 29 APR 2014	
Mould No: 6 Tooling: Custom	