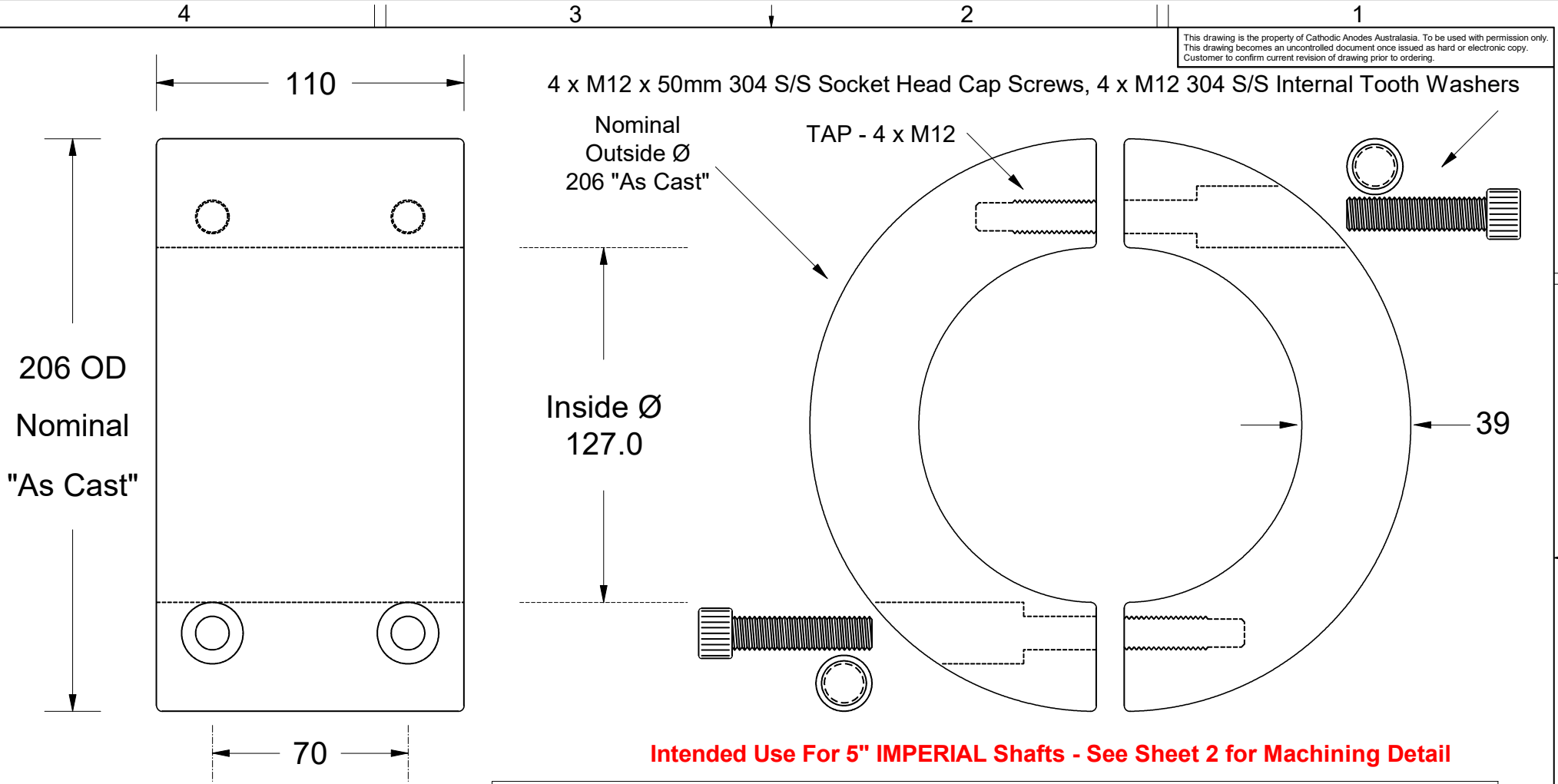


This drawing is the property of Cathodic Anodes Australasia. To be used with permission only. This drawing becomes an uncontrolled document once issued as hard or electronic copy. Customer to confirm current revision of drawing prior to ordering.



Intended Use For 5" IMPERIAL Shafts - See Sheet 2 for Machining Detail

Casting Note: Made from a (Mould Size) 206 / 214 (OD) x 111 (ID) x 116 (H) Cast Bush - Split by Machine Shop

All dimensions are in mm (nominal)

Chemical Composition Limits			Alloy: Z1
Standard: AS2239* (Most current revision)			
Zinc			
Element	min.	max.	
Cadmium	0.025	0.07	
Aluminium	0.10	0.50	
Silicon	-	0.005	
Copper	-	0.005	
Iron	-	0.005	
Lead	-	0.006	
Other Impurities			
- each	-	0.005	
- total	-	0.02	
Zinc	remainder		

* Corresponds to MIL-DTL-18001L alloy composition

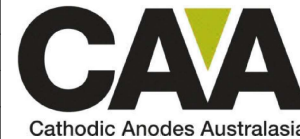
Notes

- Anodes are cast to comply with CAA's standard casting tolerances
- All sharp edges removed for safe handling
- Anode insert material to meet relevant Australian/International specifications



Rev	Details of Change(s)	Date	Drawn	Verified
1	Cathodic Diecasting Original	11 September 2011	R.N.	R.G.
2	2013 Catalogue Version (CAA Logo)	15 January 2016	R.N.	R.G.
3	Adjusted for Casting Dimensions	12 March 2018	R.N.	R.G.

Nett Weight Kg (nominal)	Gross Weight Kg (nominal)
15.8	16.0



cathodicanodes.com.au

Product Zinc Anode - Shaft Anode		Scale 1 : 2	
Part no. CDZ4 - 500		Rev 3	Sheet 1 of 2
Drawing No: CD3197		Drawn by: R Northey Date: 12 MAR 2018	