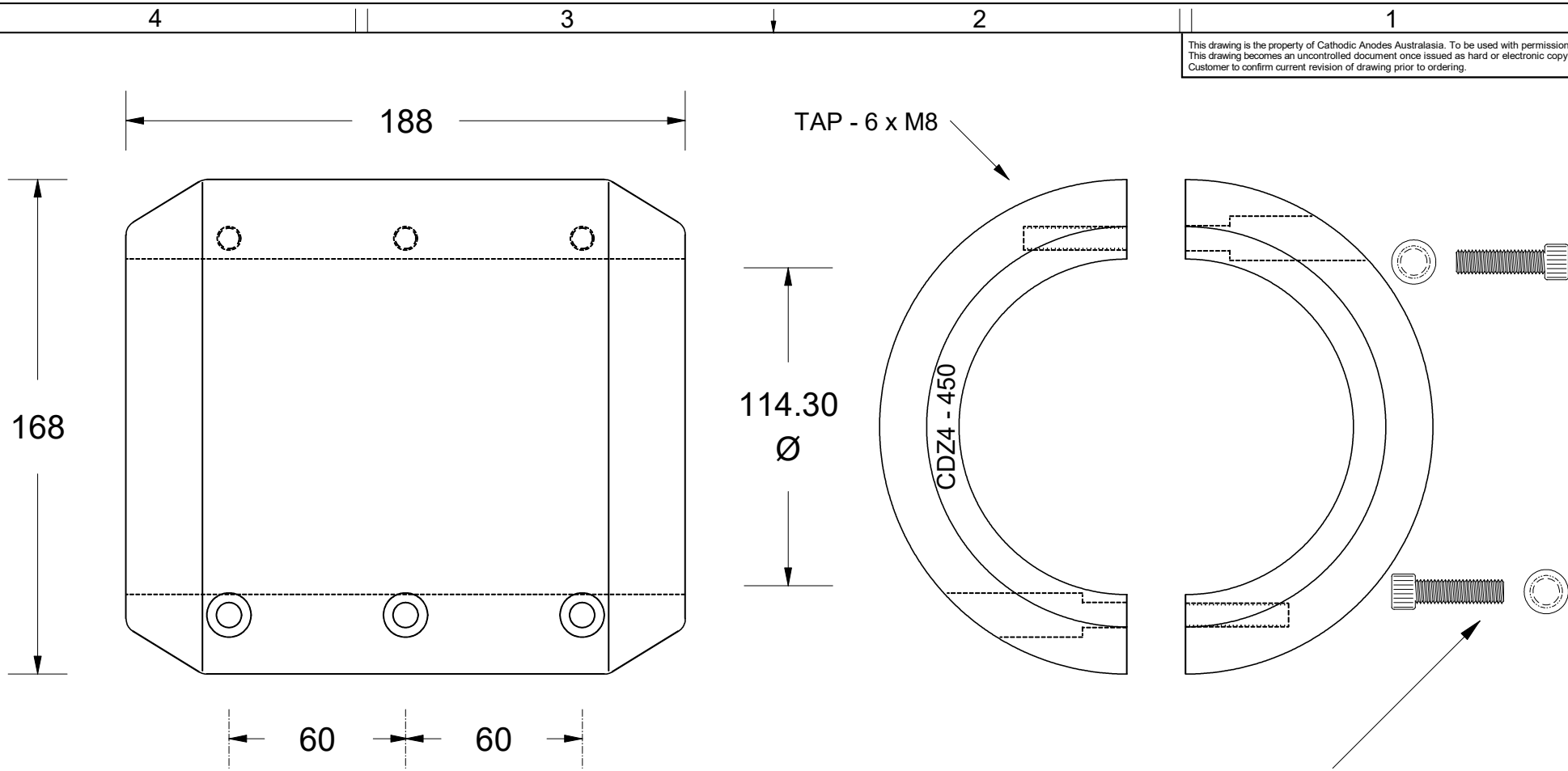


This drawing is the property of Cathodic Anodes Australasia. To be used with permission only. This drawing becomes an uncontrolled document once issued as hard or electronic copy. Customer to confirm current revision of drawing prior to ordering.



6 x M8 x 30mm 304 S/S Socket Head Cap Screws, 6 x M8 304 S/S Internal Tooth Washers

Intended Use For 4-1/2" IMPERIAL Shafts - See Sheet 2 for Machining Detail

All dimensions are in mm (nominal)

| Chemical Composition Limits | | | Alloy: |
|---|-----------|-------|-----------|
| Standard: AS2239* (Most current revision) | | | Z1 |
| Zinc | | | |
| Element | min. | max. | |
| Cadmium | 0.025 | 0.07 | |
| Aluminium | 0.10 | 0.50 | |
| Silicon | - | 0.005 | |
| Copper | - | 0.005 | |
| Iron | - | 0.005 | |
| Lead | - | 0.006 | |
| Other Impurities | | | |
| - each | - | 0.005 | |
| - total | - | 0.02 | |
| Zinc | remainder | | |

* Corresponds to MIL-DTL-18001L alloy composition

- Notes
1. Anodes are cast to comply with CAA's standard casting tolerances
 2. All sharp edges removed for safe handling
 3. Anode insert material to meet relevant Australian/International specifications



| Rev | Details of Change(s) | Date | Nett Weight | | Gross Weight | |
|-----|-----------------------------------|-------------------|--------------|--|--------------|--|
| | | | Kg (nominal) | | Kg (nominal) | |
| 1 | Cathodic Diecasting Original | 11 September 2011 | 14.2 | | 14.3 | |
| 2 | 2013 Catalogue Version (CAA Logo) | 15 January 2016 | | | | |
| | | | | | | |
| | | | | | | |

CAA
Cathodic Anodes Australasia
cathodicanodes.com.au

| | | | |
|---------------------------------|--|-------------------|---------------|
| Product | | | |
| Zinc Anode - Shaft Anode | | | |
| Part no. | | Scale | |
| CDZ4 - 450 | | 1 : 2 | |
| Drawing No: CD3196 | | Rev | Sheet |
| | | 2 | 1 of 2 |
| Drawn by: R Northey | | Date: 15 JAN 2016 | |
| | | | |