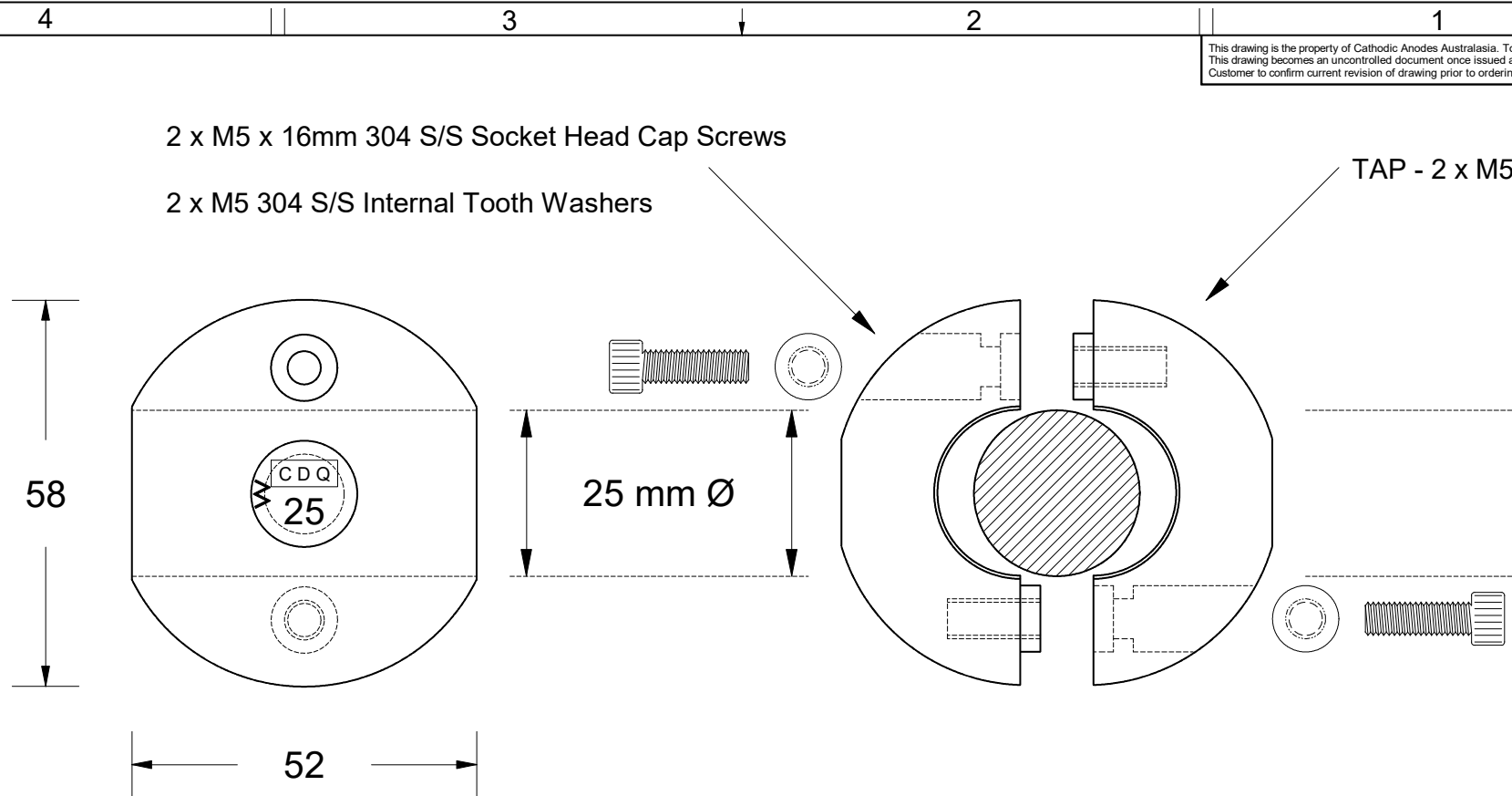
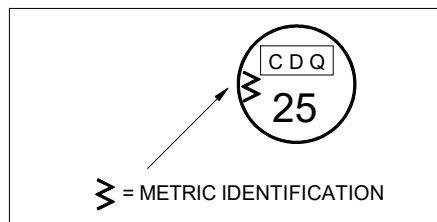


This drawing is the property of Cathodic Anodes Australasia. To be used with permission only. This drawing becomes an uncontrolled document once issued as hard or electronic copy. Customer to confirm current revision of drawing prior to ordering.



Intended Use For 25 mm METRIC Shafts

- Notes**
1. Anodes are cast to comply with CAA's standard casting tolerances
 2. All sharp edges removed for safe handling
 3. Anode insert material to meet relevant Australian/International specifications



All dimensions are in mm (nominal)

Chemical Composition Limits		Alloy:
Standard: AS2239* (Most current revision)		Z1
Element	min.	max.
Cadmium	0.025	0.07
Aluminium	0.10	0.50
Silicon	-	0.005
Copper	-	0.005
Iron	-	0.005
Lead	-	0.006
Other Impurities		
- each	-	0.005
- total	-	0.02
Zinc		remainder

* Corresponds to MIL-DTL-18001L alloy composition



Rev	Details of Change(s)	Date	Nett Weight		Gross Weight	
			Kg (nominal)		Kg (nominal)	
			0.49		0.50	
1	Cathodic Diecasting Original	29 August 2011		R.N.		R.G.
2	2013 Catalogue Version (CAA Logo)	18 December 2015		R.N.		R.G.



Cathodic Anodes Australasia

cathodicanodes.com.au

Product			
Zinc Anode - Shaft Anode			
Part no.		Scale	
CDZ4 - 25M		1 : 1	
Drawing No: CD3158		Rev	Sheet
		2	1 of 1
Drawn by: R Northey		Date: 18 DEC 2015	