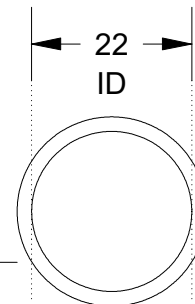
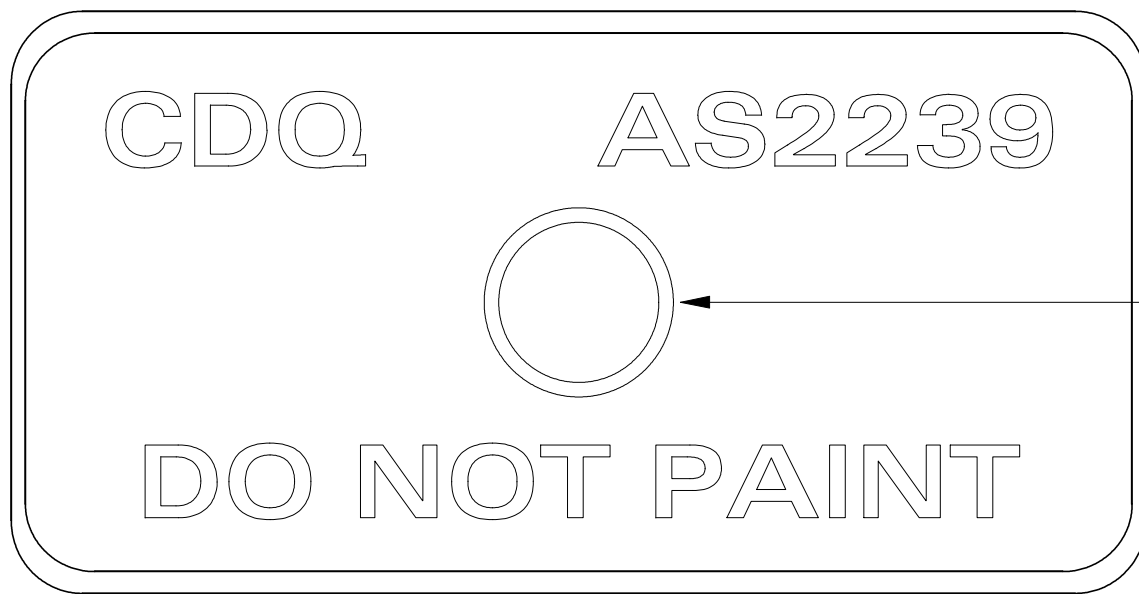
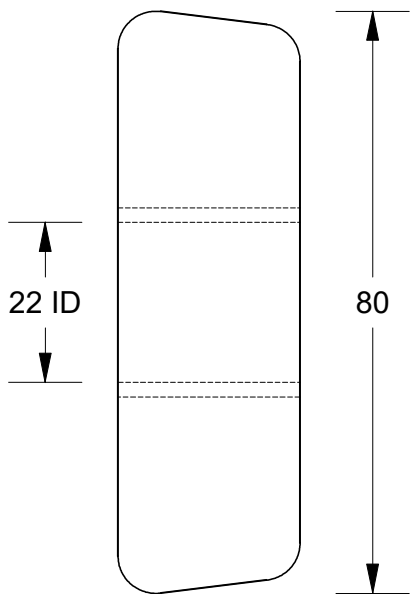
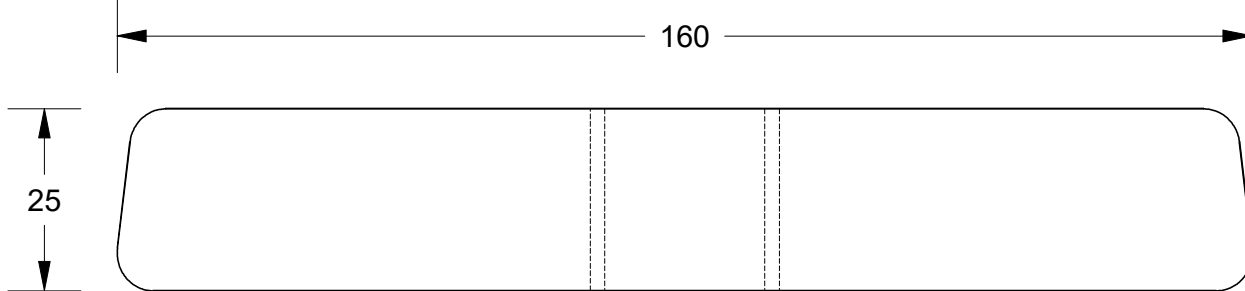
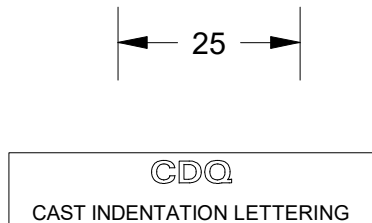


This drawing is the property of Cathodic Anodes Australasia. To be used with permission only.  
 This drawing becomes an uncontrolled document once issued as hard or electronic copy.  
 Customer to confirm current revision of drawing prior to ordering.



MILD STEEL "PIPE" INSERT



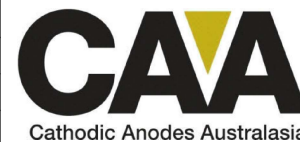
Chemical Composition Limits			Alloy: <b>A1</b>
Standard: AS2239 (Most current revision)			
Aluminium			
Element	min.	max.	
Zinc	2.1	2.7	
Indium	0.017	0.025	
Cadmium	0.008	0.012	
Silicon	-	0.20	
Iron	-	0.12	
Copper	-	0.006	
Other Impurities			
- each	-	0.02	
- total	-	0.05	
Aluminium	remainder		

Notes

- Anodes are cast to comply with CAA's standard casting tolerances
- All sharp edges removed for safe handling
- Anode insert material to meet relevant Australian/International specifications



Nett Weight Kg (nominal)		Gross Weight Kg (nominal)		
<b>0.82</b>		<b>0.85</b>		
Rev	Details of Change(s)	Date	Drawn	Verified
1	Cathodic Diecasting Original	24 August 2011	R.N.	R.G.
2	2013 Catalogue Version (CAA Logo)	10 January 2014	R.N.	R.G.



cathodicanodes.com.au

Product <b>Aluminium Anode</b>			
Part no. <b>CDA-1H (A1)</b>		Scale <b>1 : 1</b>	
Drawing No: <b>CD3150</b>		Rev <b>2</b>	Sheet <b>1 of 1</b>
Drawn by: R Northey		Date: 10 JAN 2014	
Mould No: 60		Insert: In House	

All dimensions are in mm (nominal)