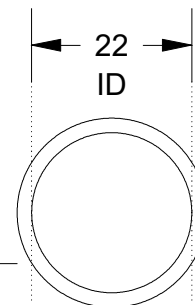
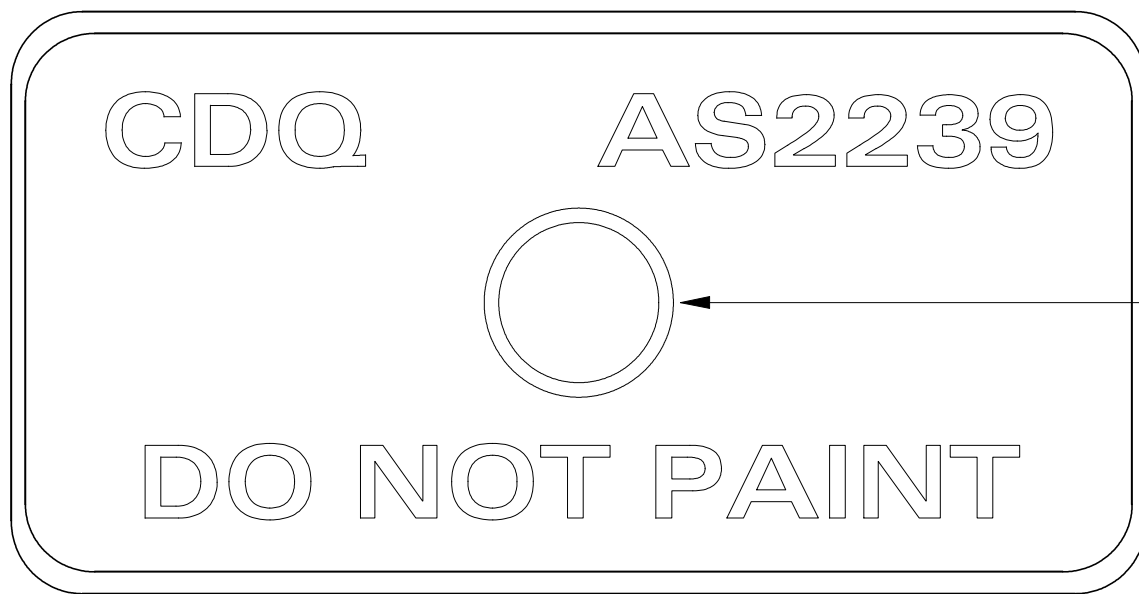
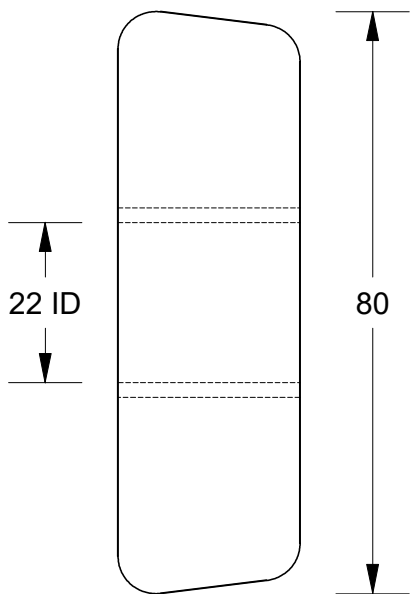
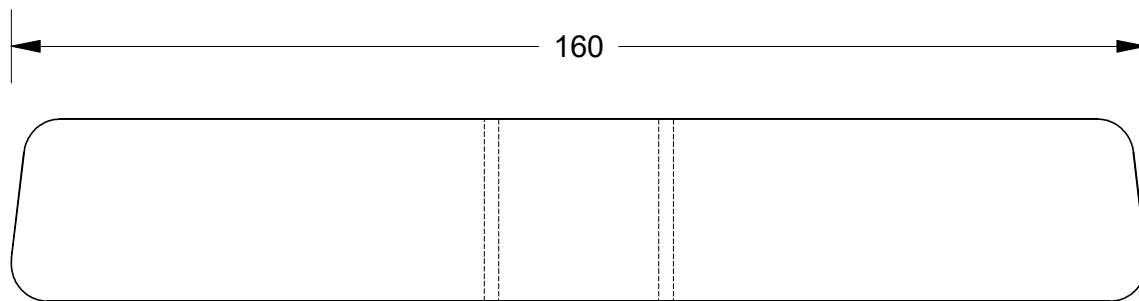
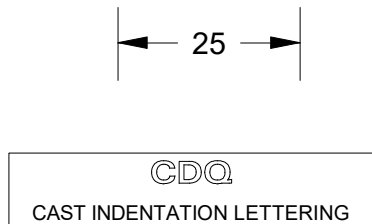


This drawing is the property of Cathodic Anodes Australasia. To be used with permission only.
 This drawing becomes an uncontrolled document once issued as hard or electronic copy.
 Customer to confirm current revision of drawing prior to ordering.



MILD STEEL "PIPE" INSERT



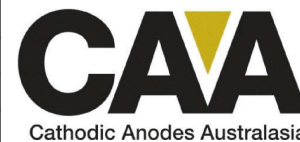
Chemical Composition Limits		Alloy:
Standard: AS2239 (Most current revision)		A6
Element	min.	max.
Zinc	2.0	6.0
Indium	0.01	0.02
Cadmium	-	0.005
Silicon	0.08	0.12
Iron	-	0.12
Magnesium	-	0.02
Titanium	-	0.02
Copper	-	0.006
Tin	-	0.02
Other Impurities		
- each	-	0.02
- total	-	0.05
Aluminium	remainder	

- Notes
- Anodes are cast to comply with CAA's standard casting tolerances
 - All sharp edges removed for safe handling
 - Anode insert material to meet relevant Australian/International specifications



All dimensions are in mm (nominal)

Rev	Details of Change(s)	Nett Weight		Gross Weight	
		Kg (nominal)		Kg (nominal)	
		0.82	0.85		
Date	Drawn	Verified			
1	Cathodic Diecasting Original	23 August 2011	R.N.	R.G.	
2	2013 Catalogue Version (CAA Logo)	10 January 2014	R.N.	R.G.	



cathodicanodes.com.au

Product		Aluminium Anode	
Part no.	CDA-1H (A6)	Scale	1 : 1
Drawing No:	CD3149	Rev	2
Drawn by: R Northey		Date: 10 JAN 2014	Sheet
Mould No: 60		Insert: In House	1 of 1

